

An intraoperative photograph showing a surgical dissection of the infra-orbital nerve bundle. The nerve is visible as a yellowish, cord-like structure within a surgical field. The surrounding tissue is pinkish-red, and there are some blue surgical markings on the skin. The text "Infra-orbital Nerve Bundle Exposure" is overlaid in red and white.

Infra-orbital Nerve Bundle Exposure

Menu





Infra-Orbital Nerve

Menu





Sensory Impulse
Transmission
from below
the Eye

Menu



via the Infra-
Orbital Nerve



Menu



The Infra-Orbital Nerve



Menu



The Roof of the Maxillary Sinus



Menu



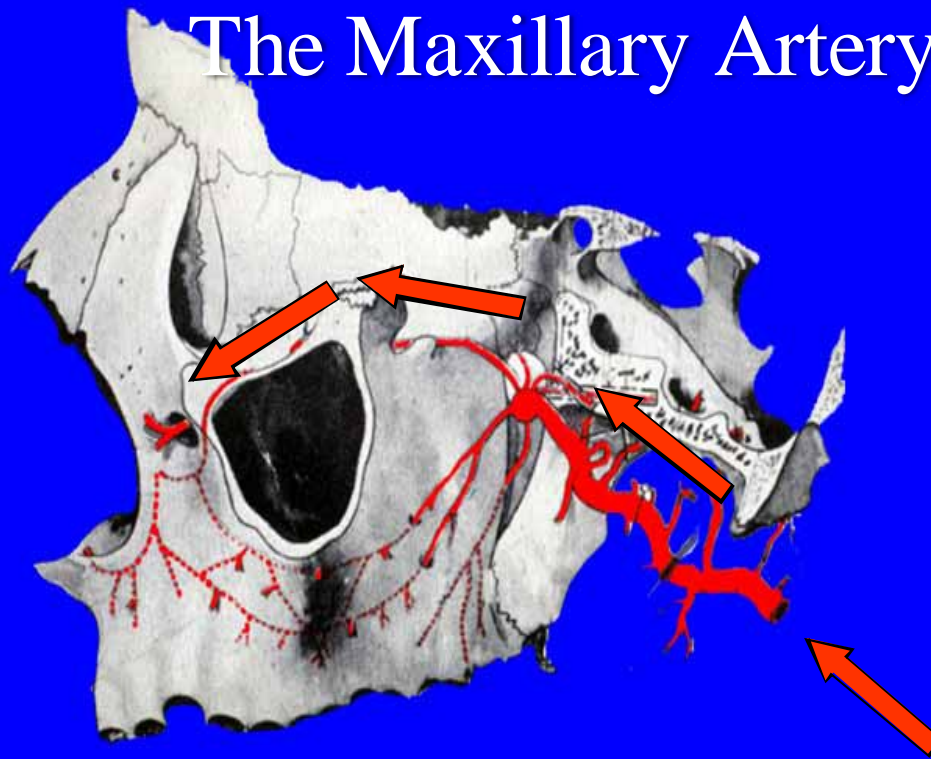
to the Maxillary Nerve



Menu



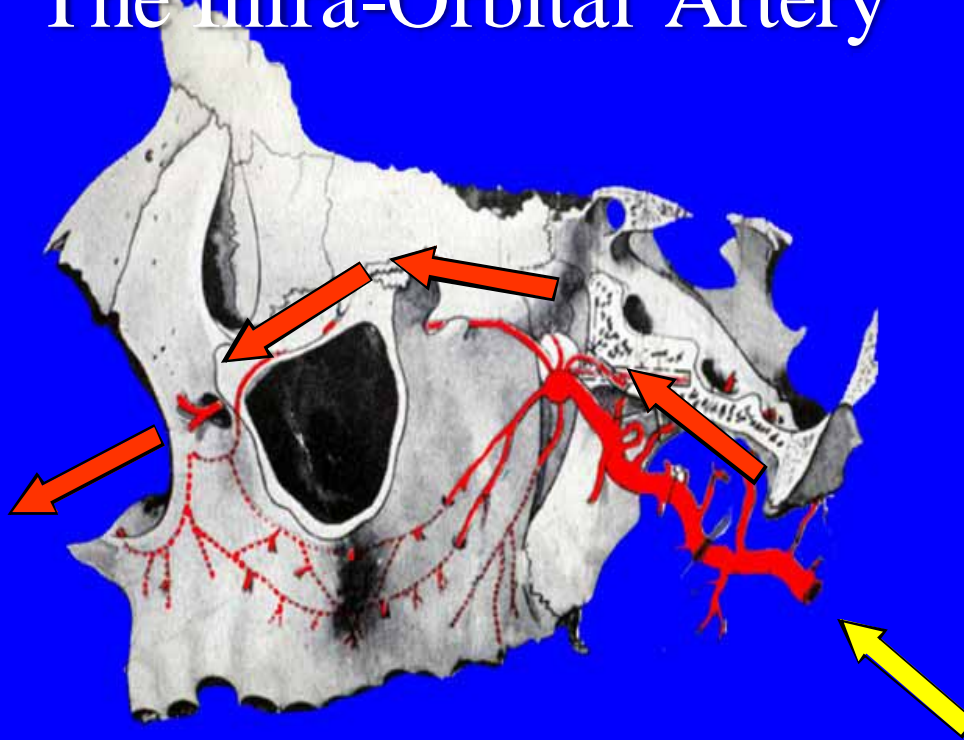
The Maxillary Artery



Menu



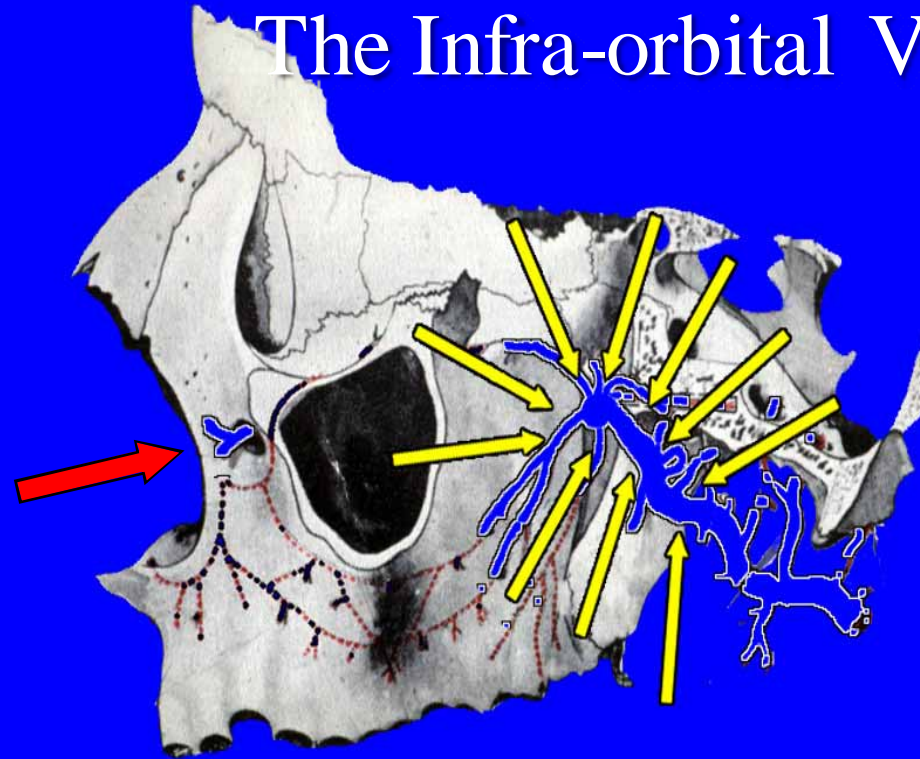
The Infra-Orbital Artery



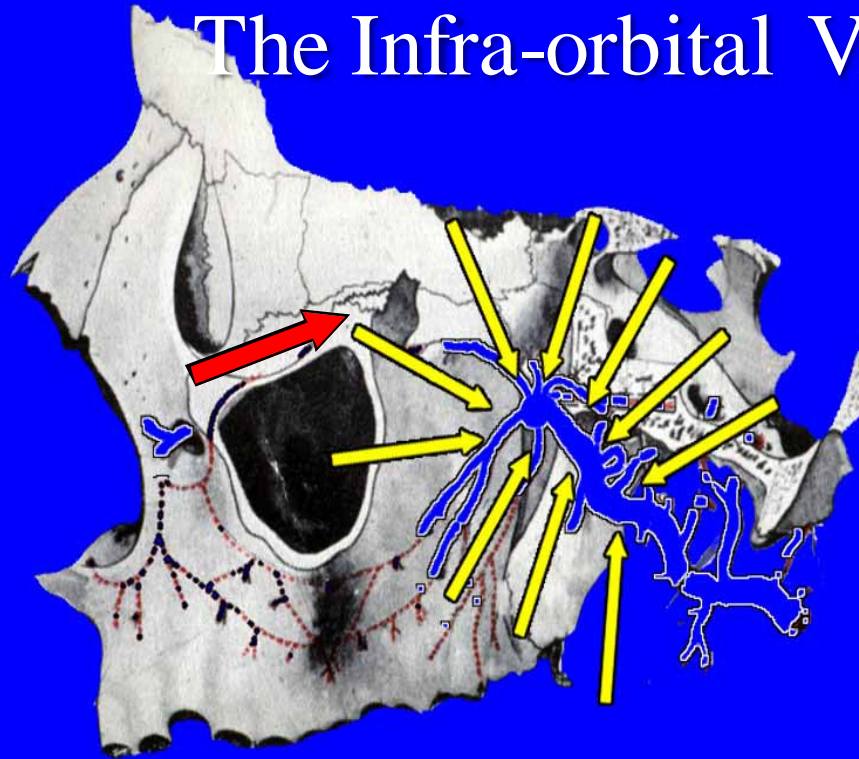
Menu



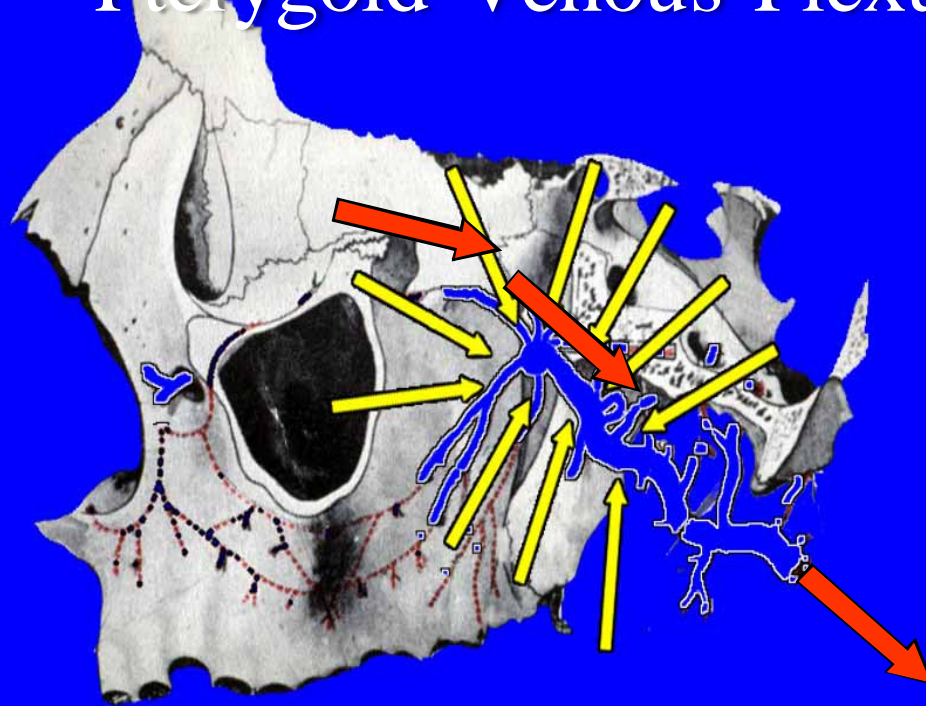
The Infra-orbital Vein



The Infra-orbital Vein



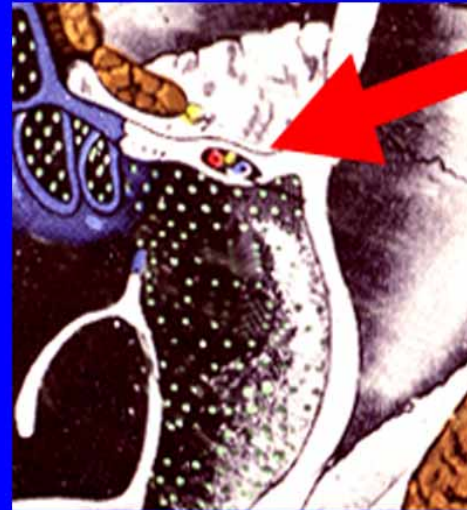
Pterygoid Venous Plexus



Menu



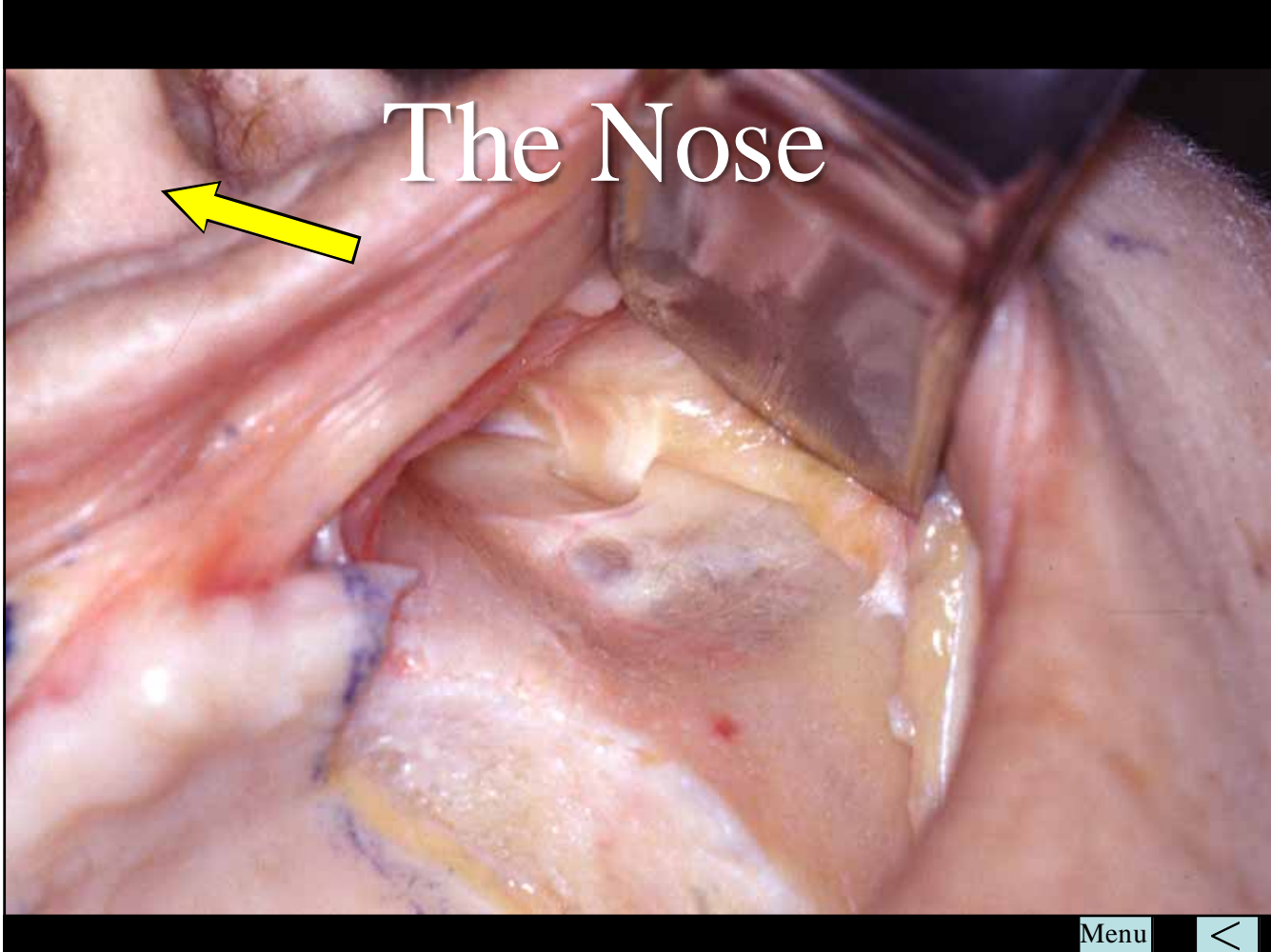
The Infra-orbital Nerve and Vessels



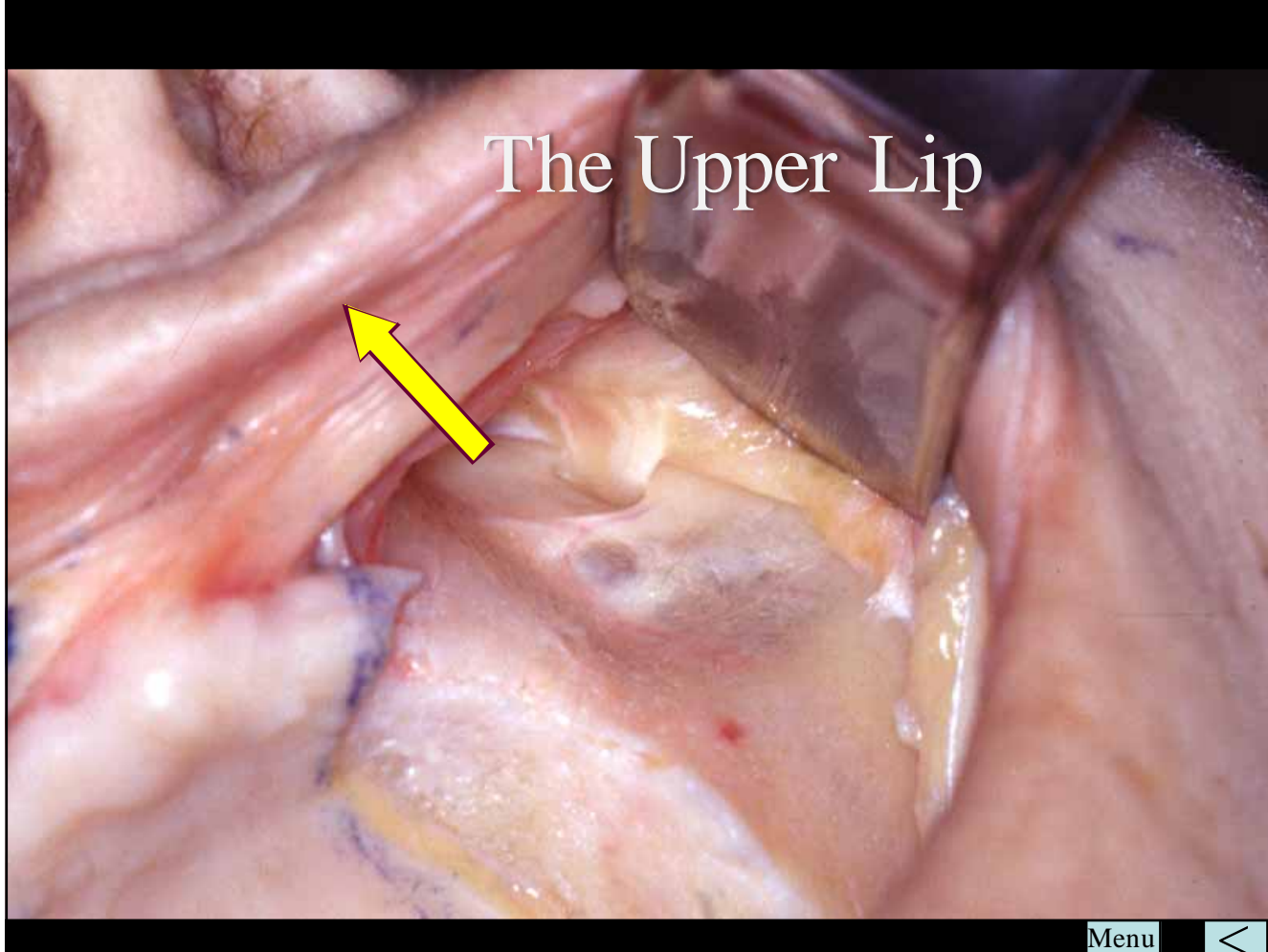
Menu



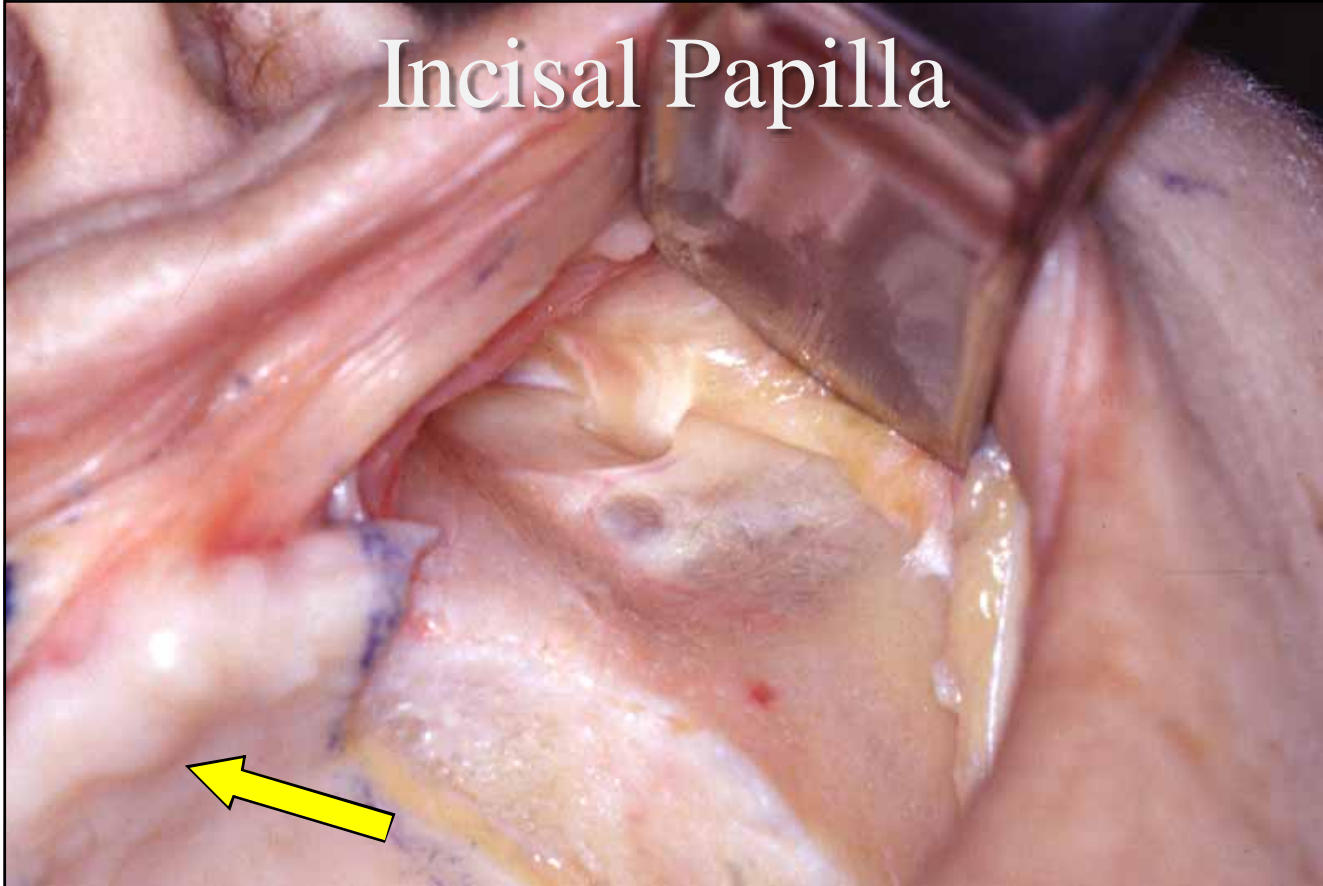
The Nose



The Upper Lip



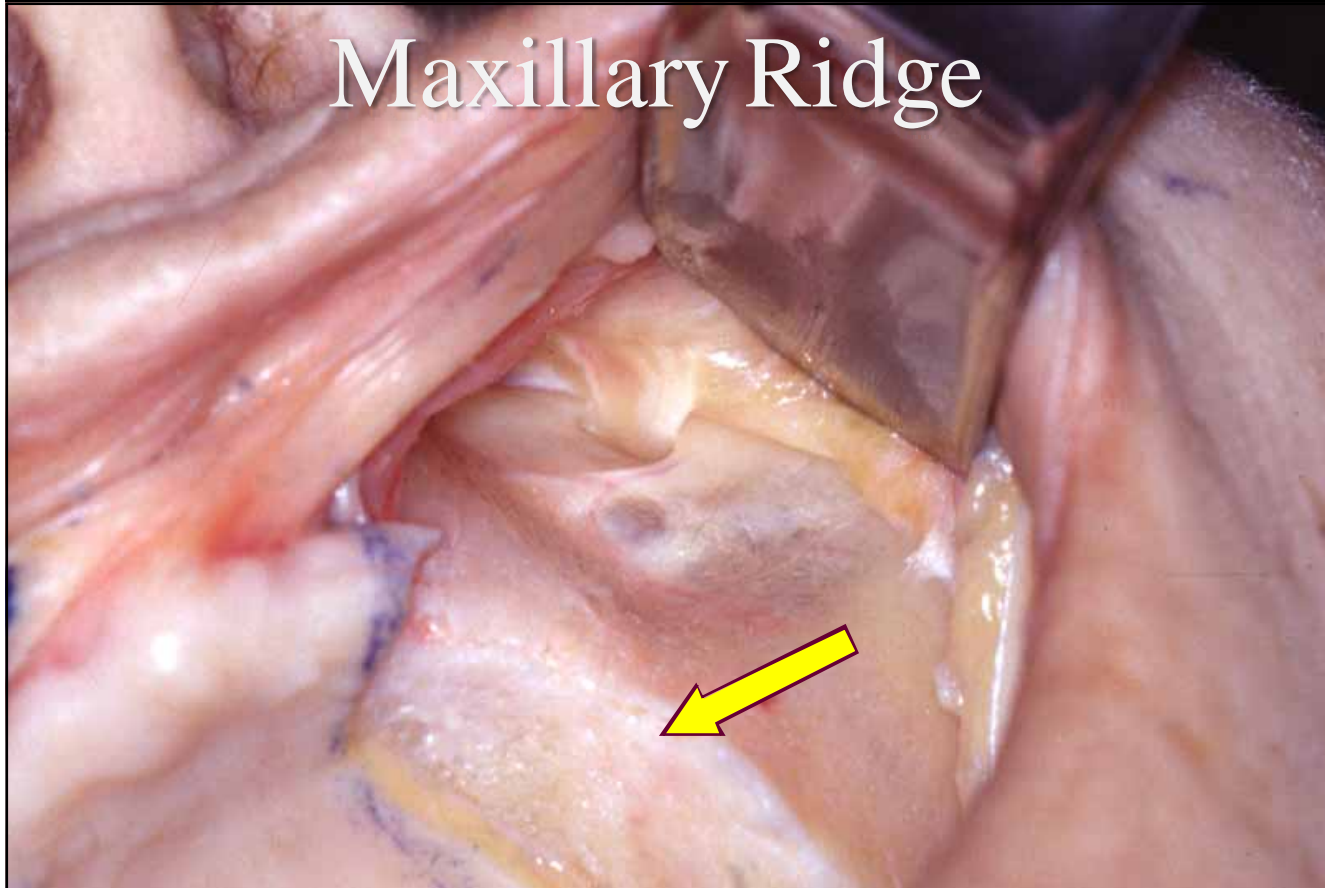
Incisal Papilla



Menu



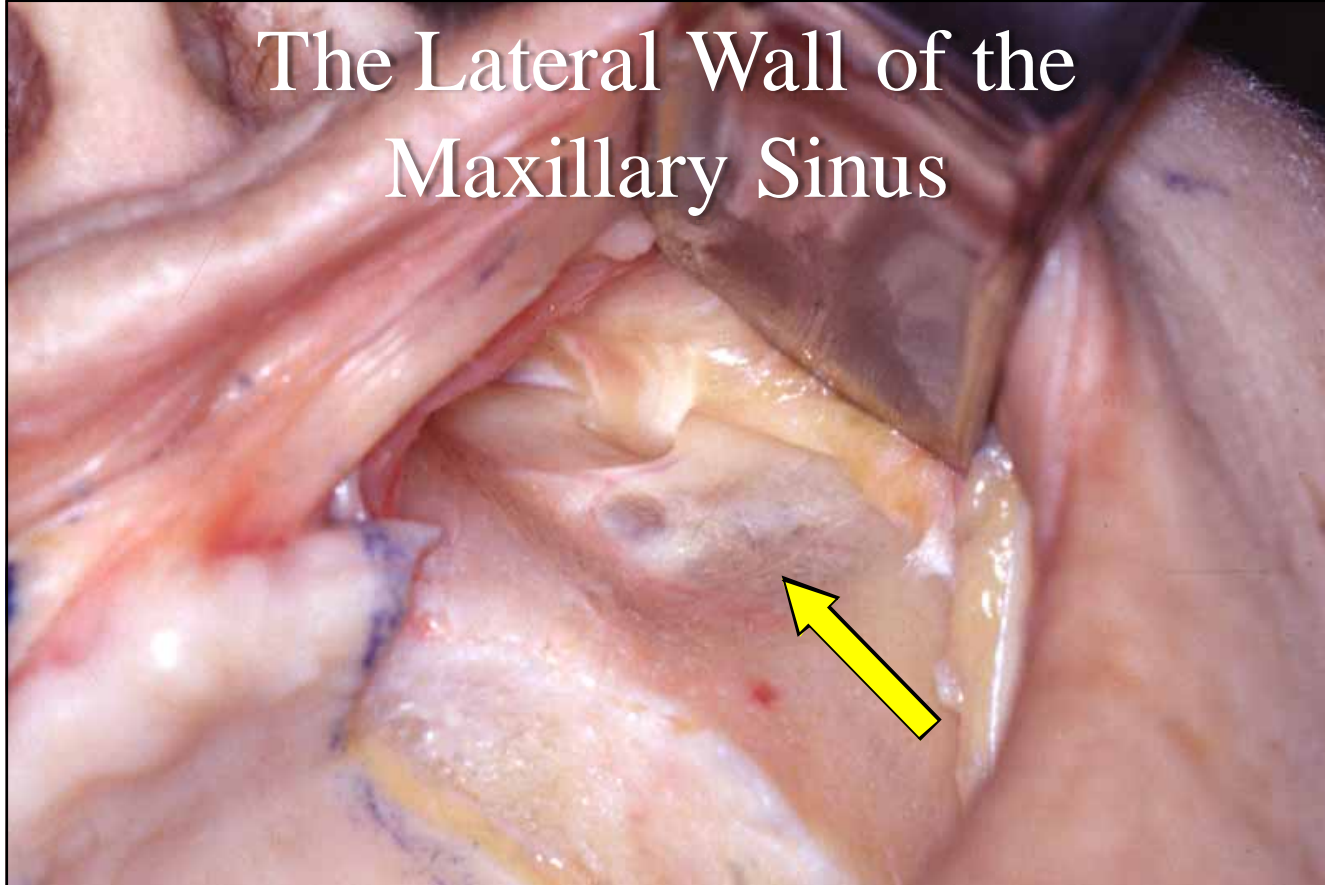
Maxillary Ridge



Menu



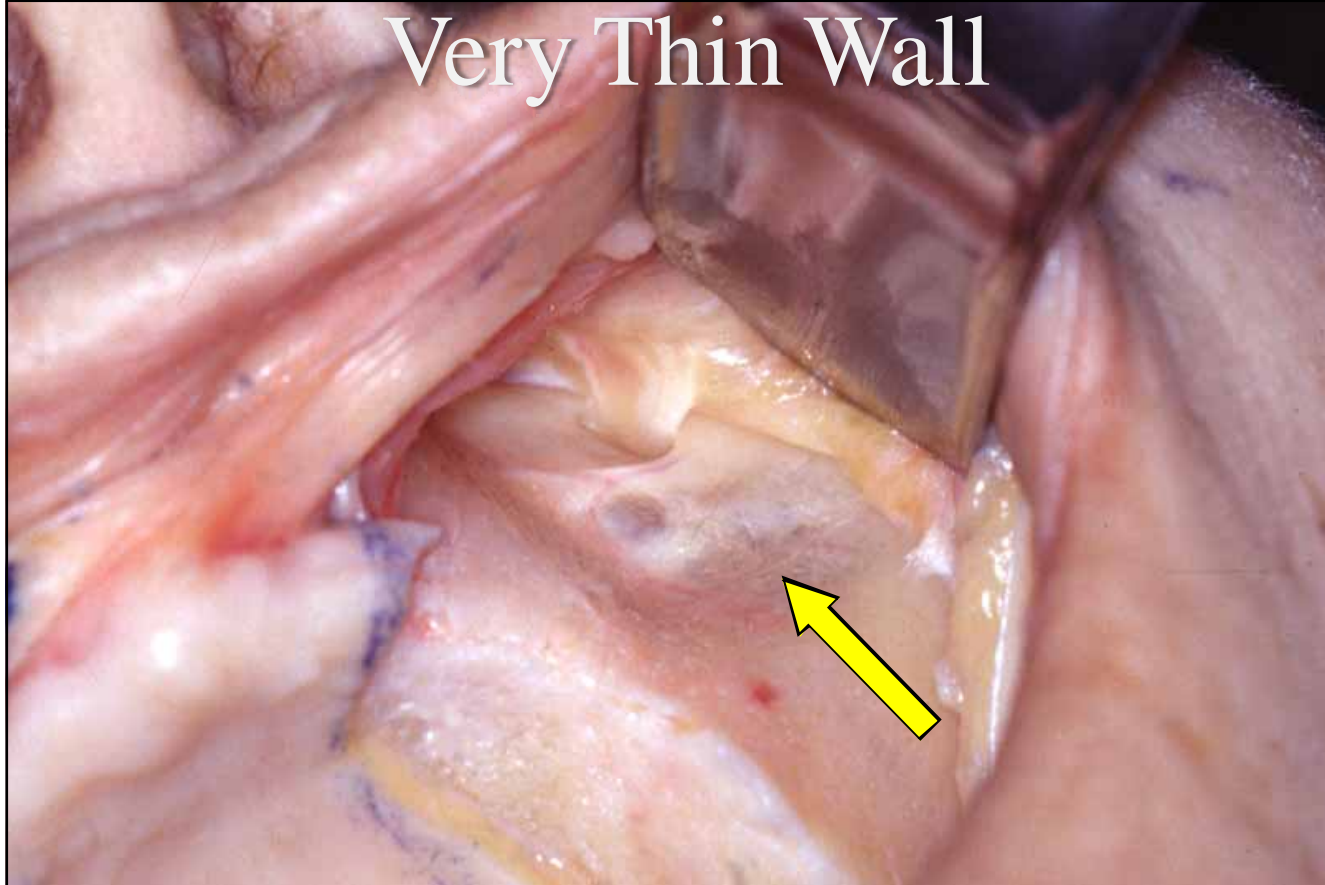
The Lateral Wall of the Maxillary Sinus



Menu



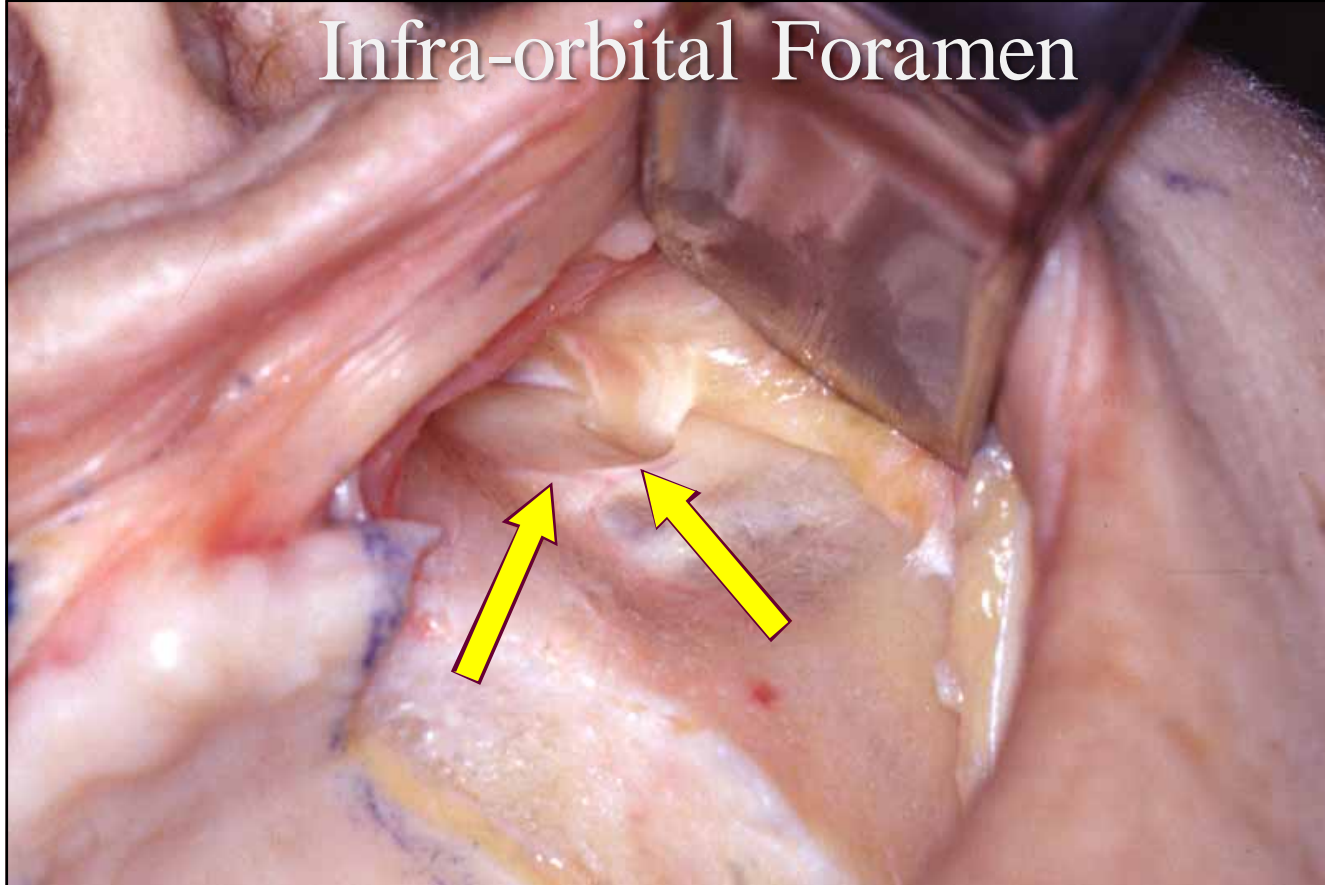
Very Thin Wall



Menu



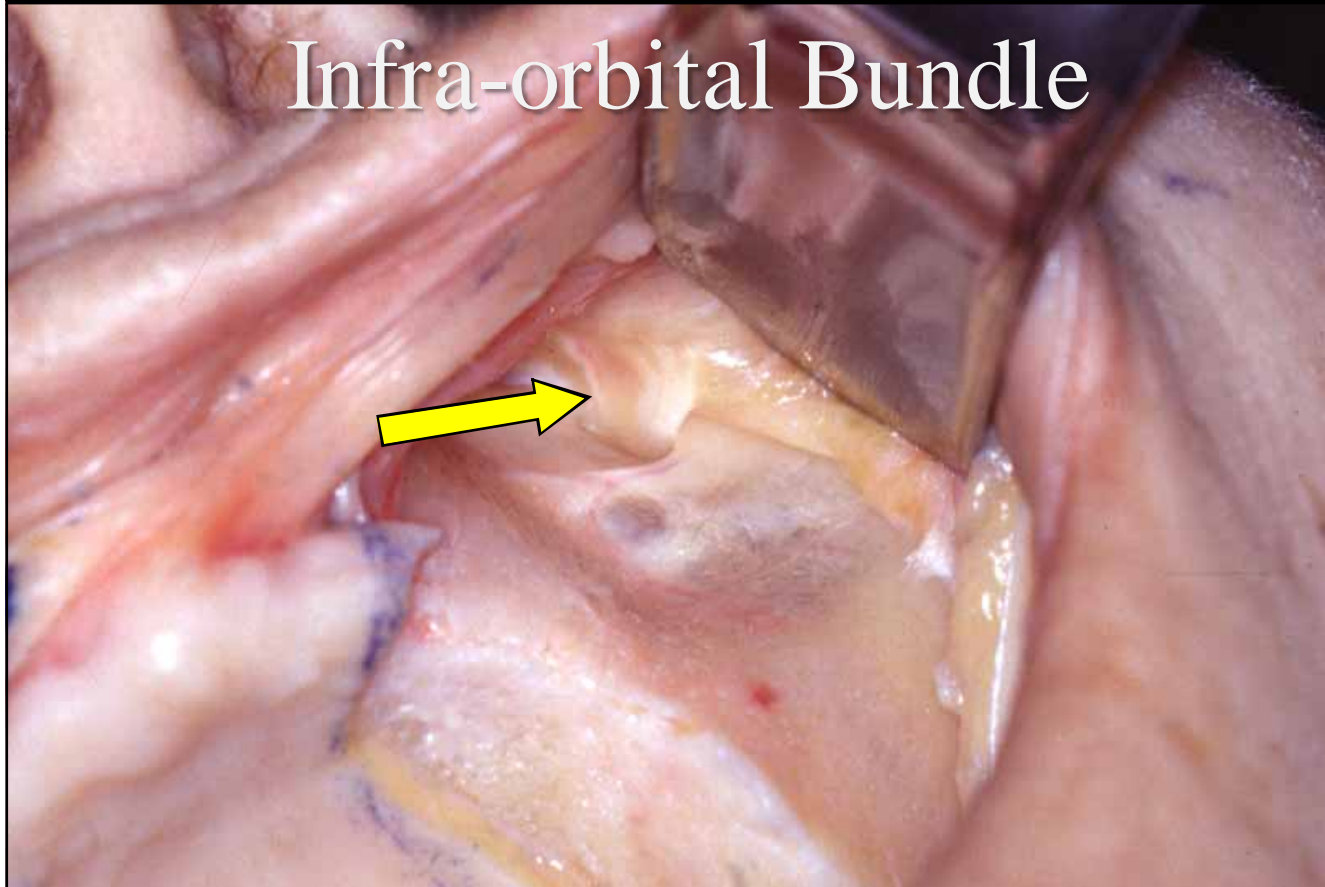
Infra-orbital Foramen



Menu



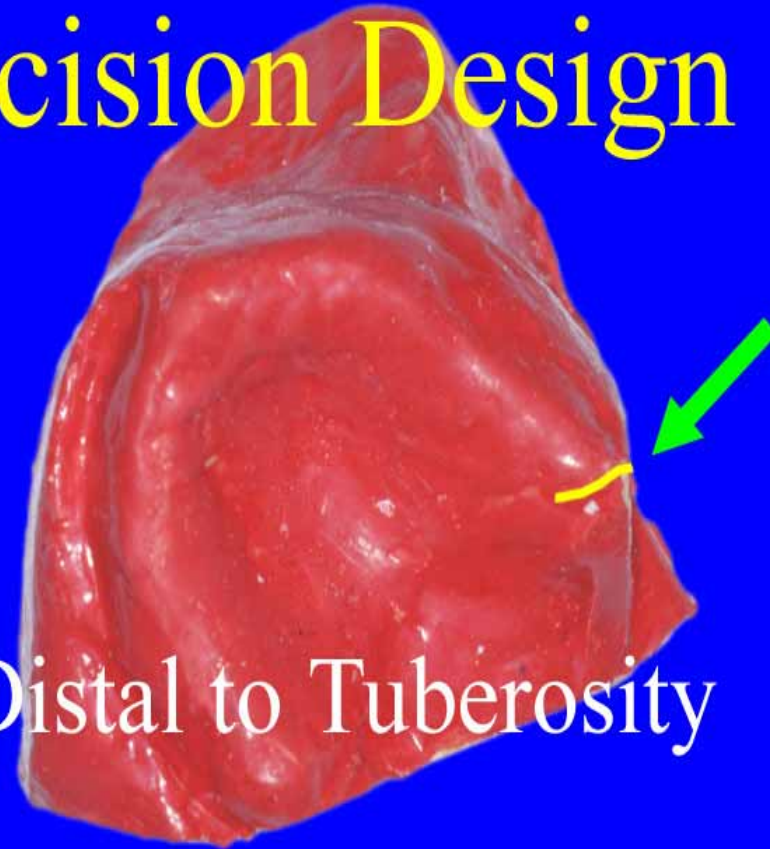
Infra-orbital Bundle



Menu



Incision Design

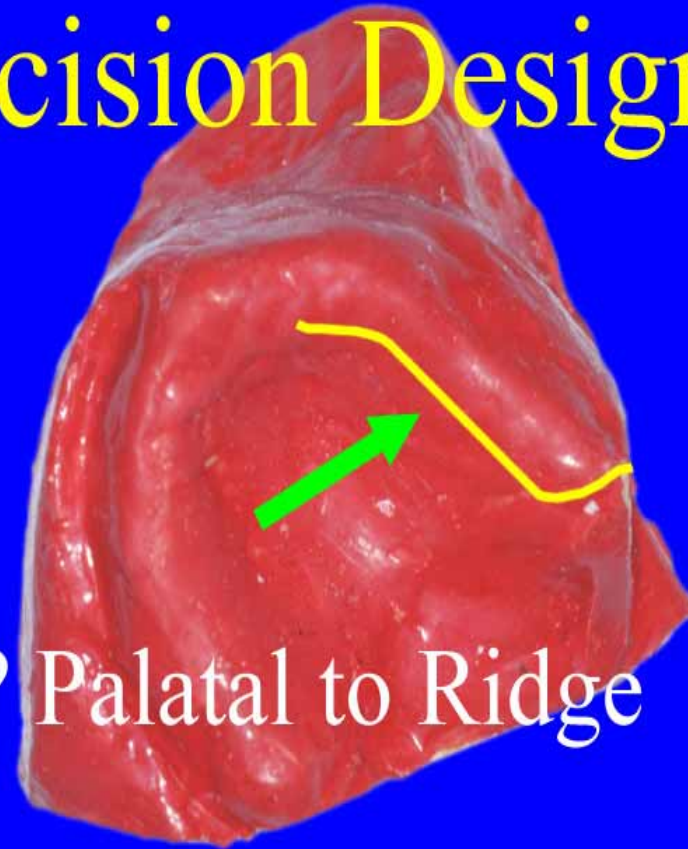


Distal to Tuberosity

Menu



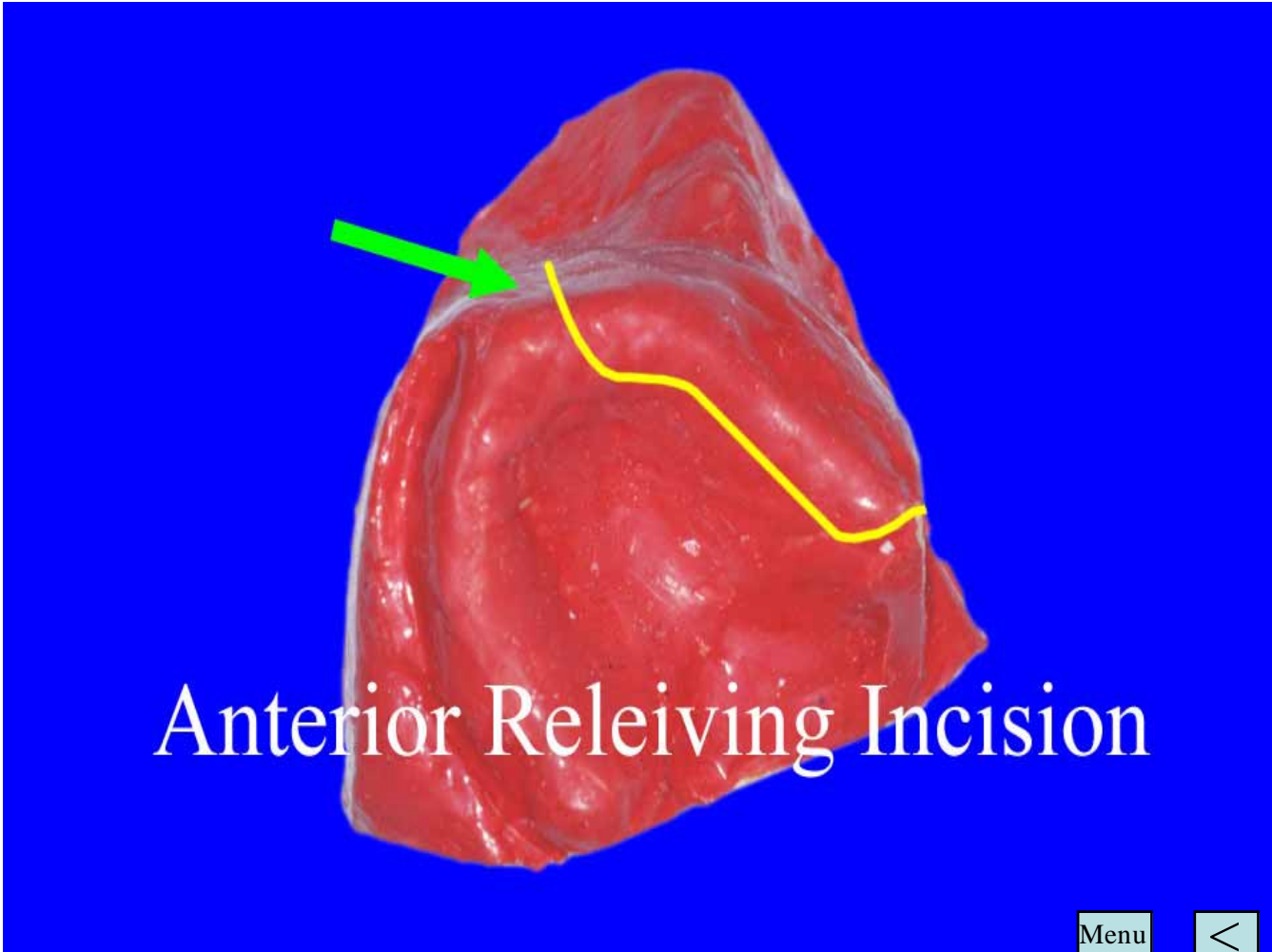
Incision Design



? Palatal to Ridge

Menu



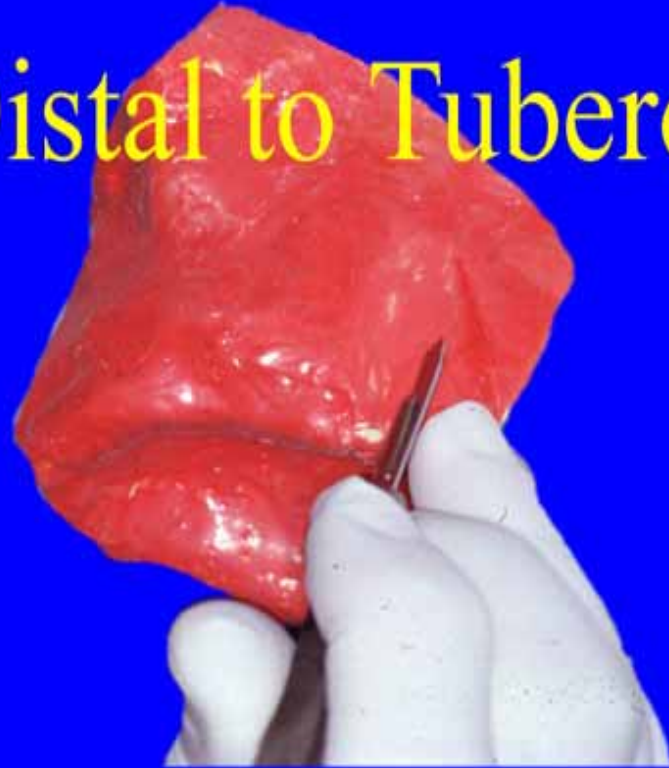


Anterior Releiving Incision

Menu



Distal to Tuberosity



Menu



Palatal to Ridge



Menu



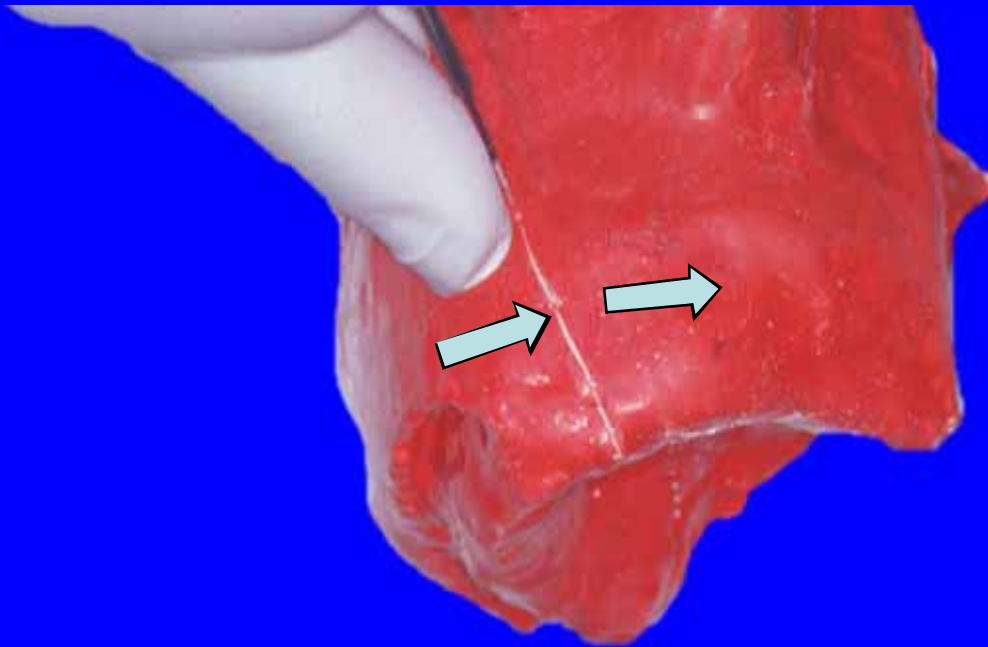
Anterior Relieving Incision



Menu



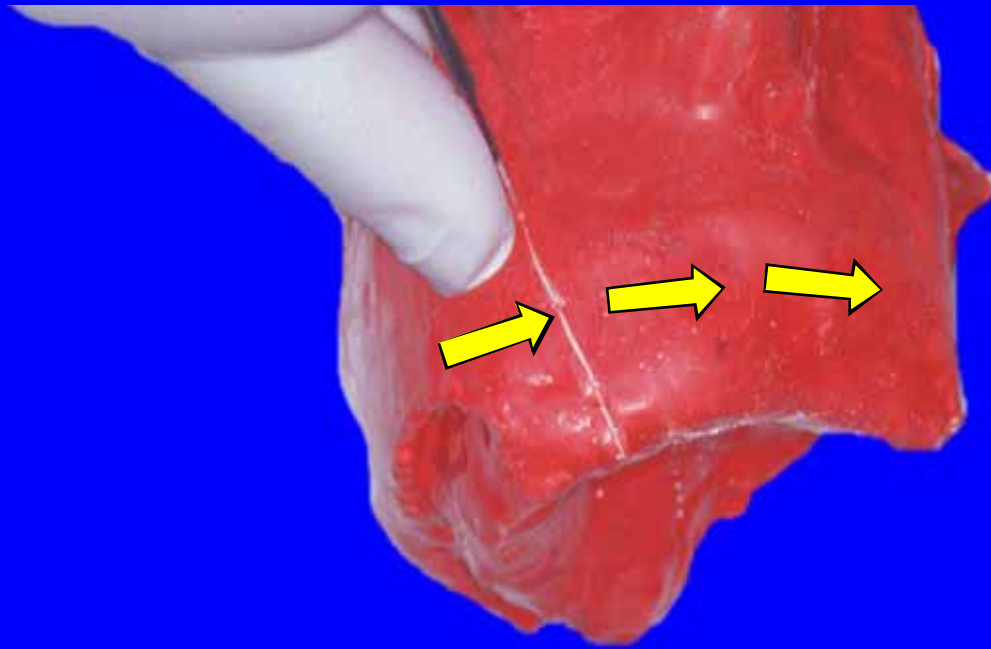
Start by elevating under the Periosteum
of the Unattached Mucosa



Menu



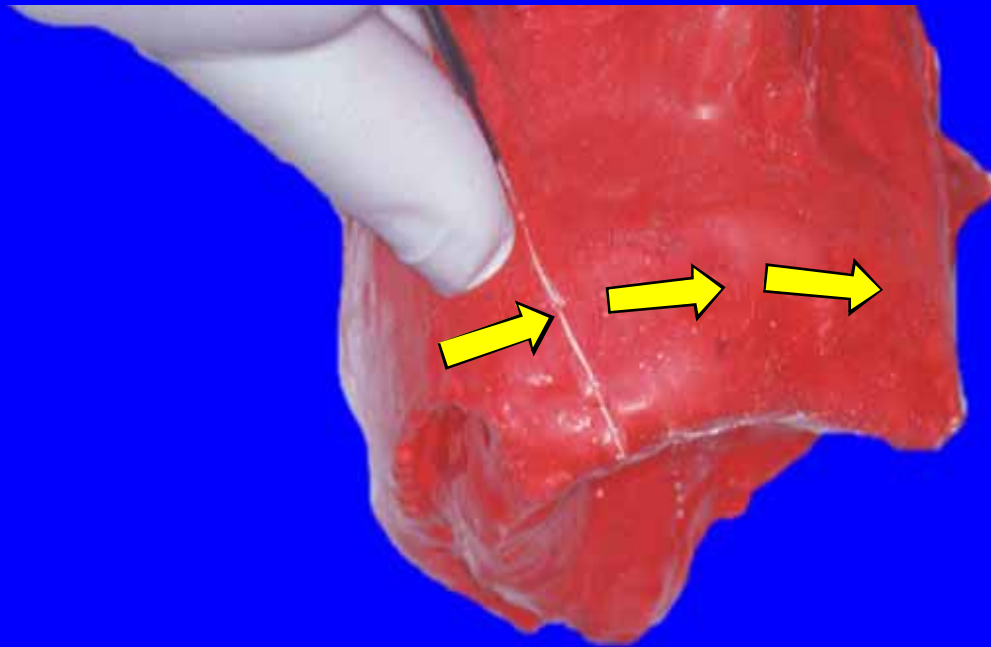
Care must be taken no to break through
the Wall of the Sinus



Menu



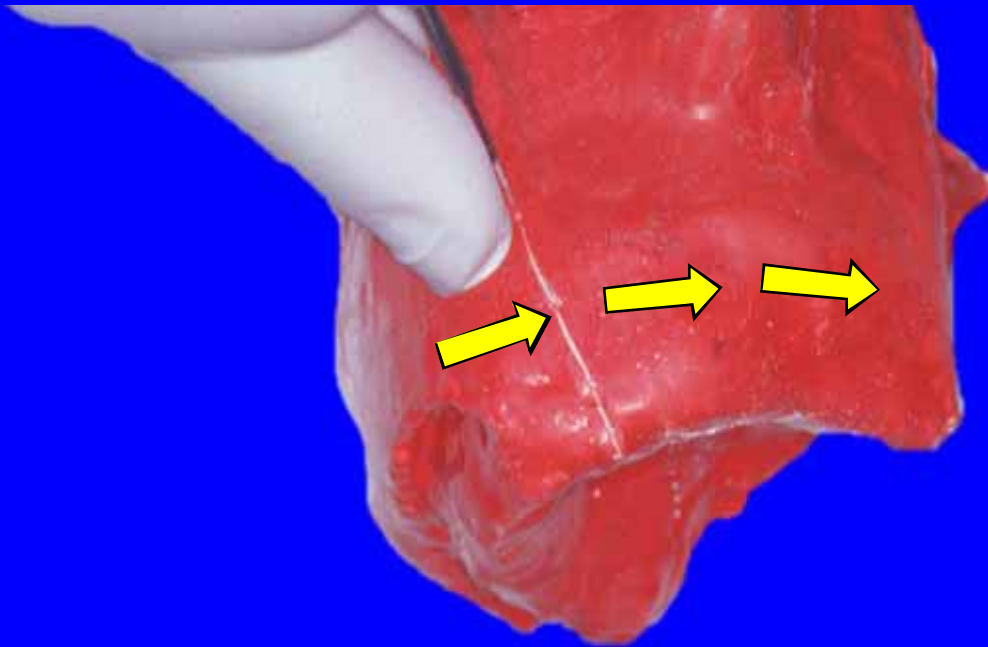
After elevating under the Unattached Mucosa



Menu



Elevate from the Palate



Menu

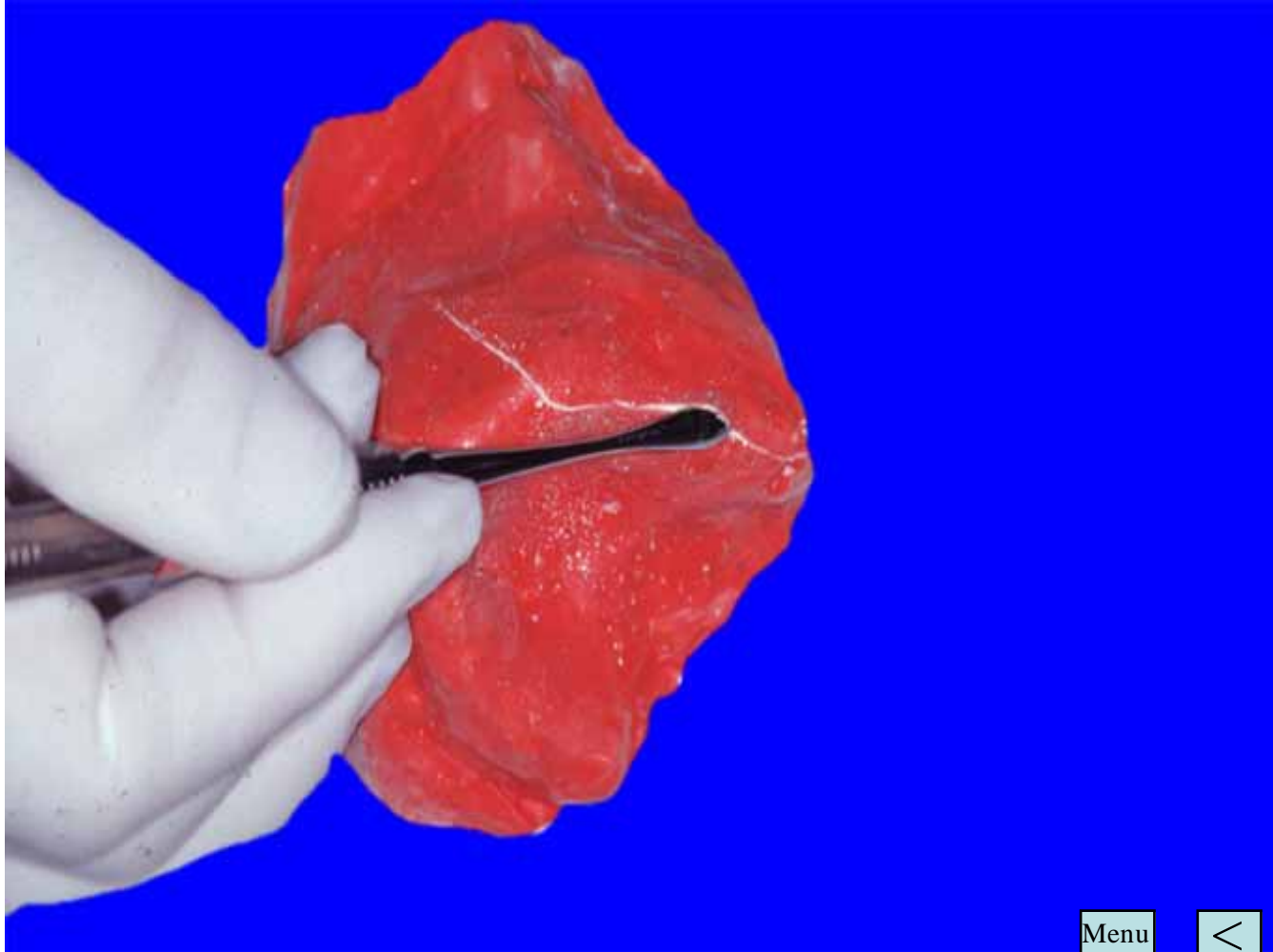


Elevate Flap Carefully
to preserve Flap Integrity



Menu





Menu



Flap Reflected



Zygomatic
Process

Menu



Flap Reflected



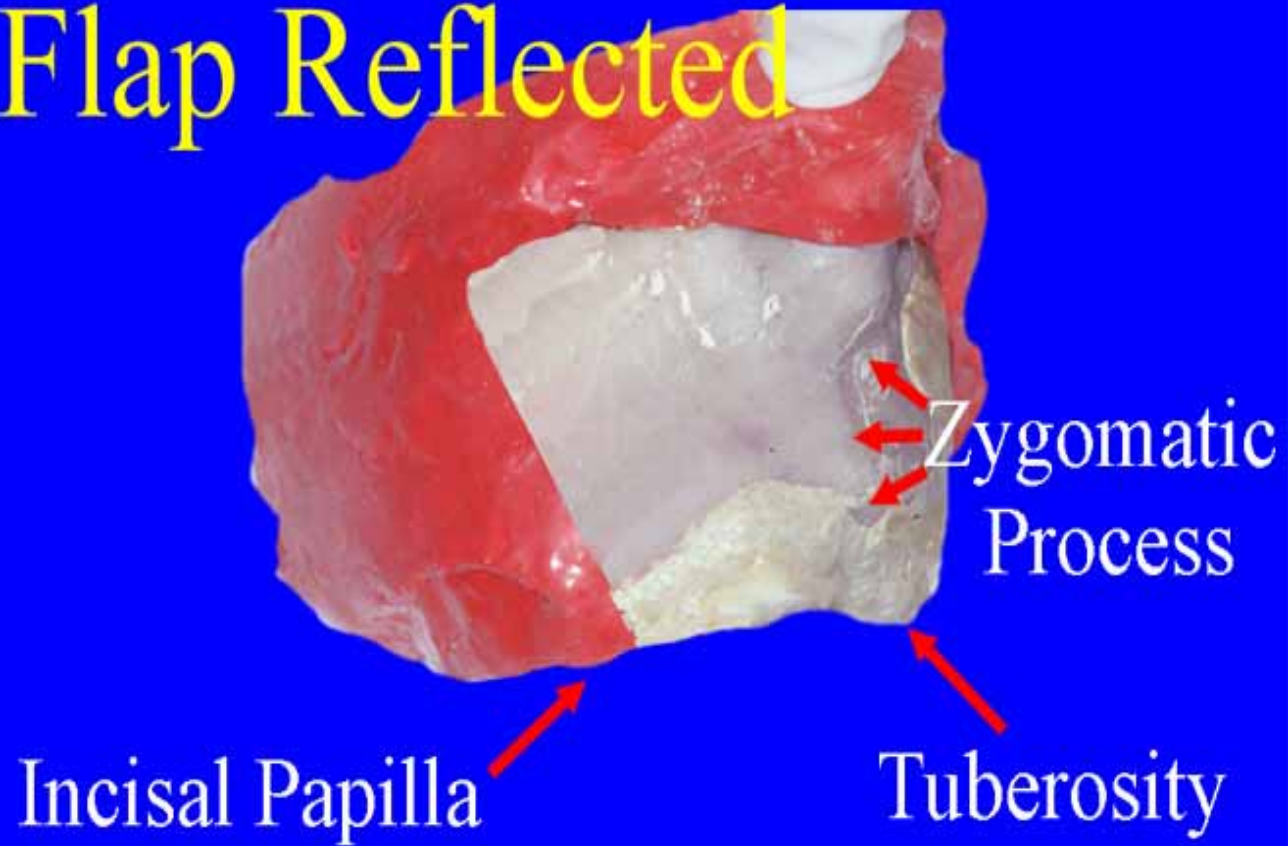
Zygomatic
Process

Tuberosity

Menu



Flap Reflected



Menu



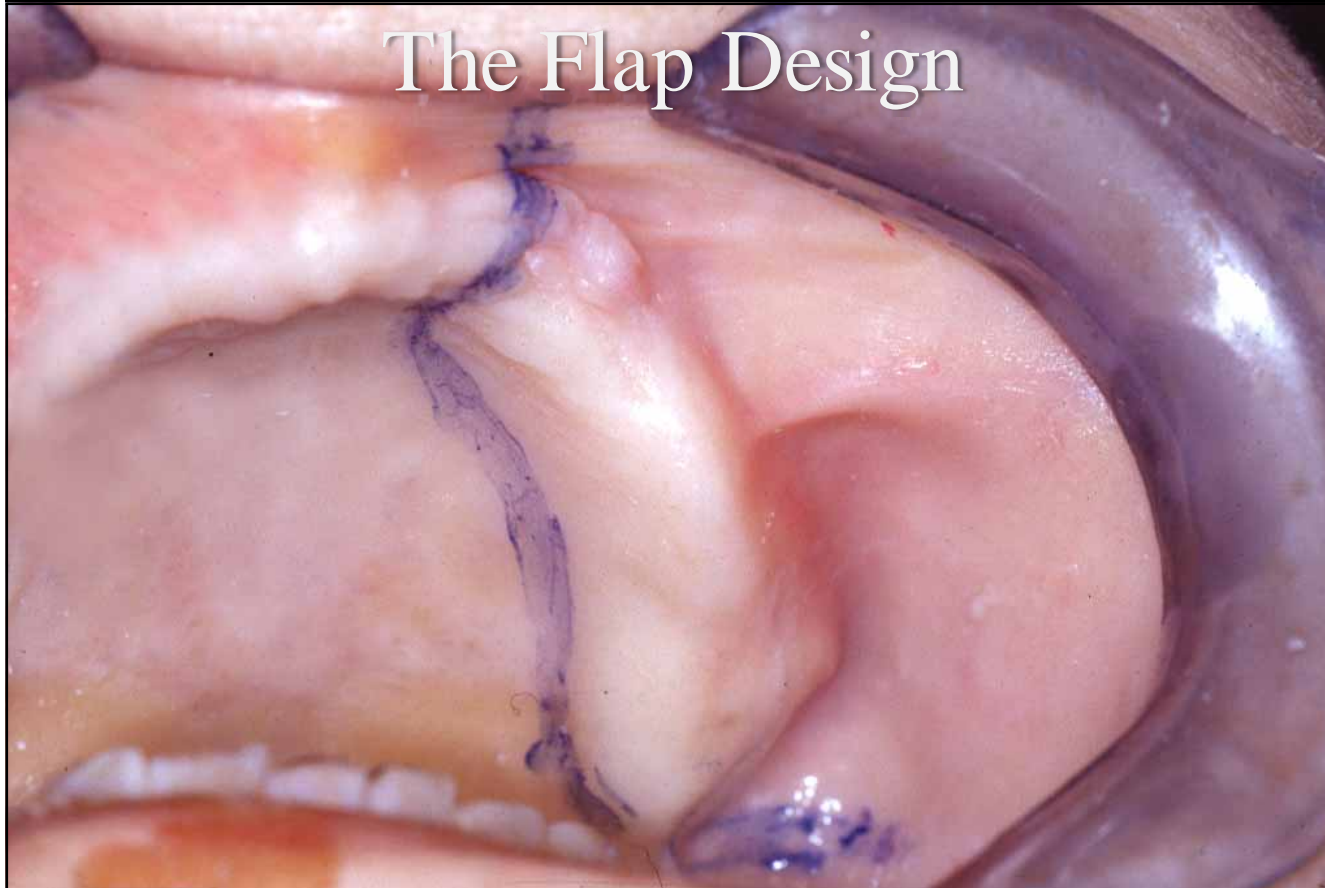
The Exposure of the Infra-orbital Bundle



Menu



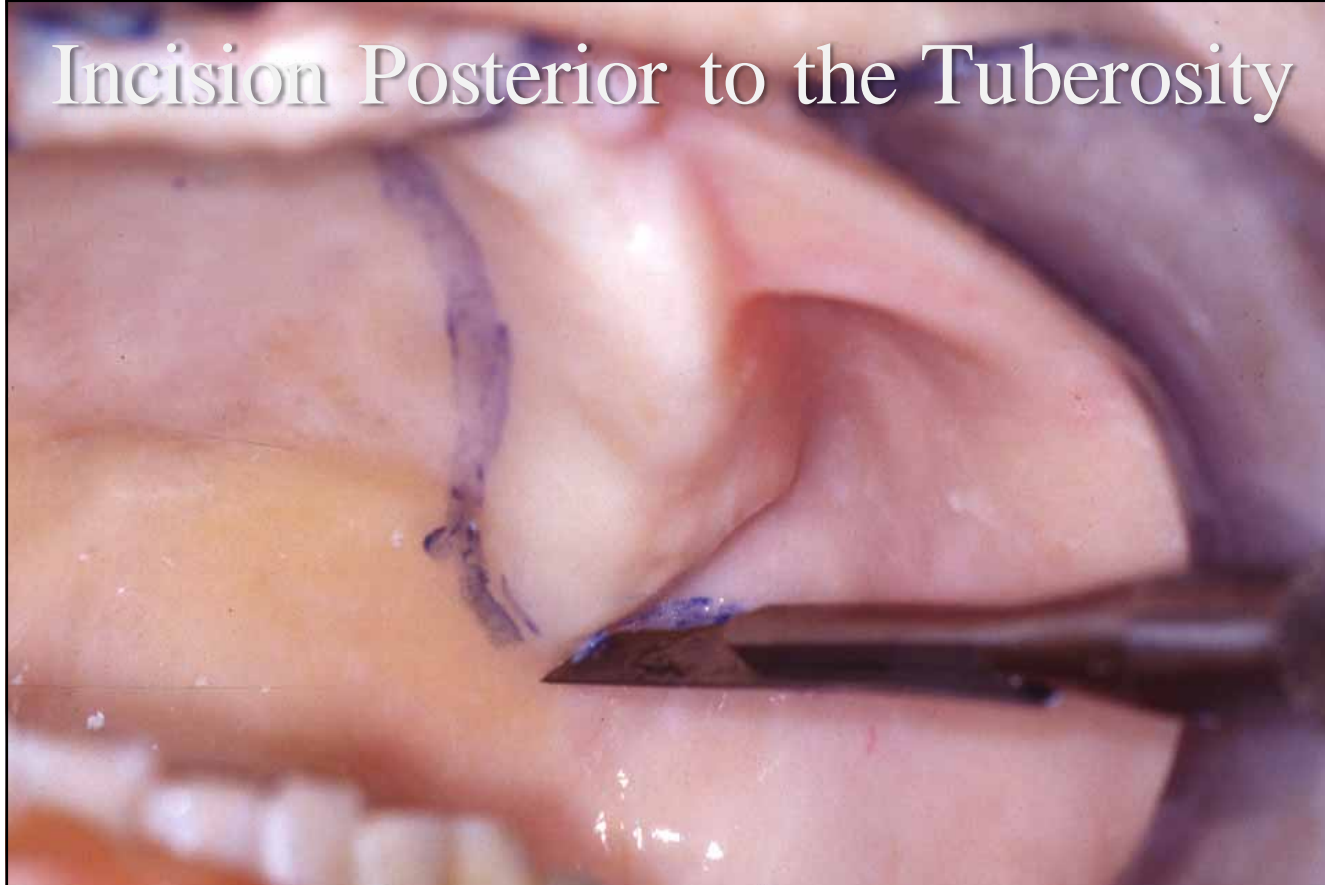
The Flap Design



Menu



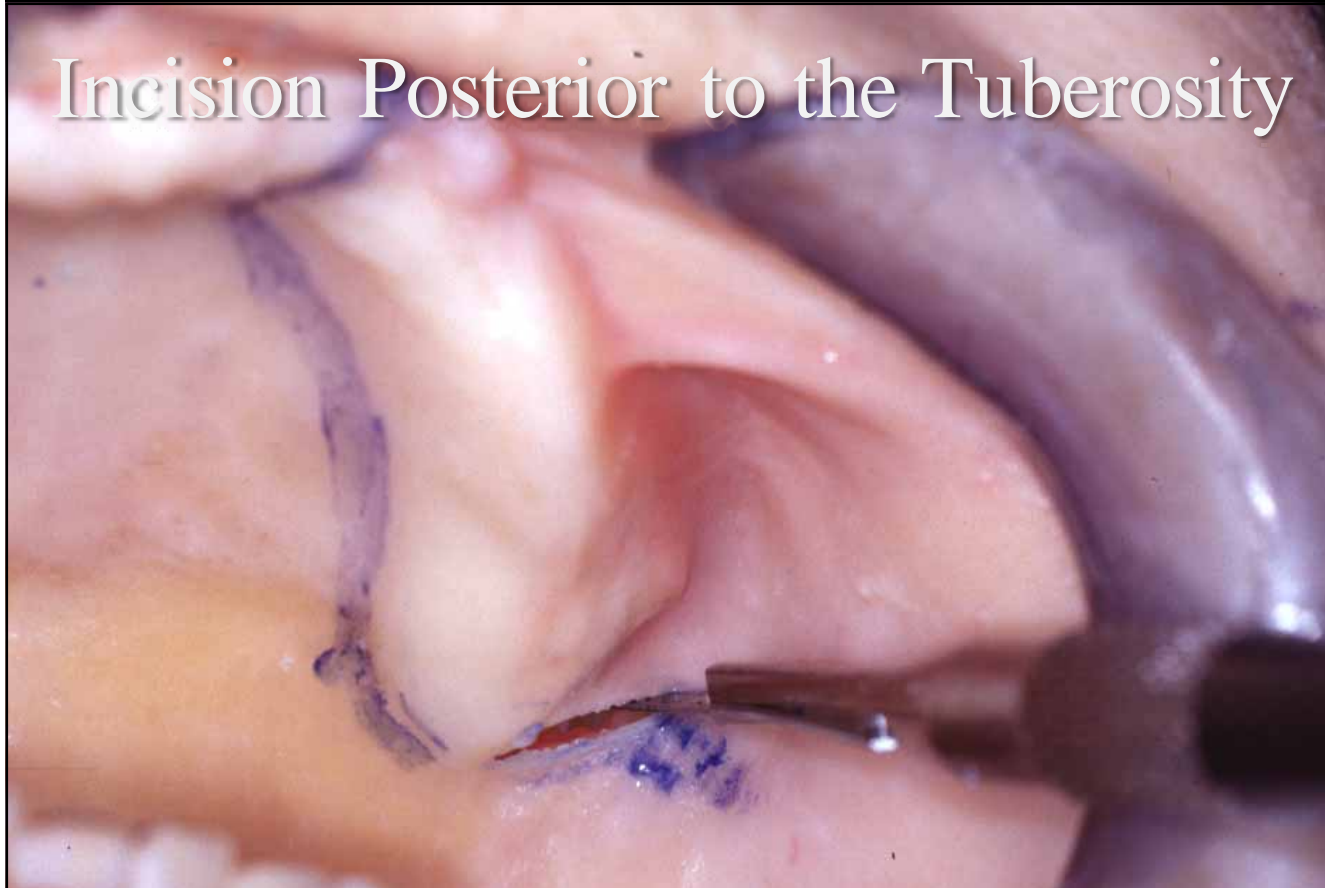
Incision Posterior to the Tuberosity



Menu



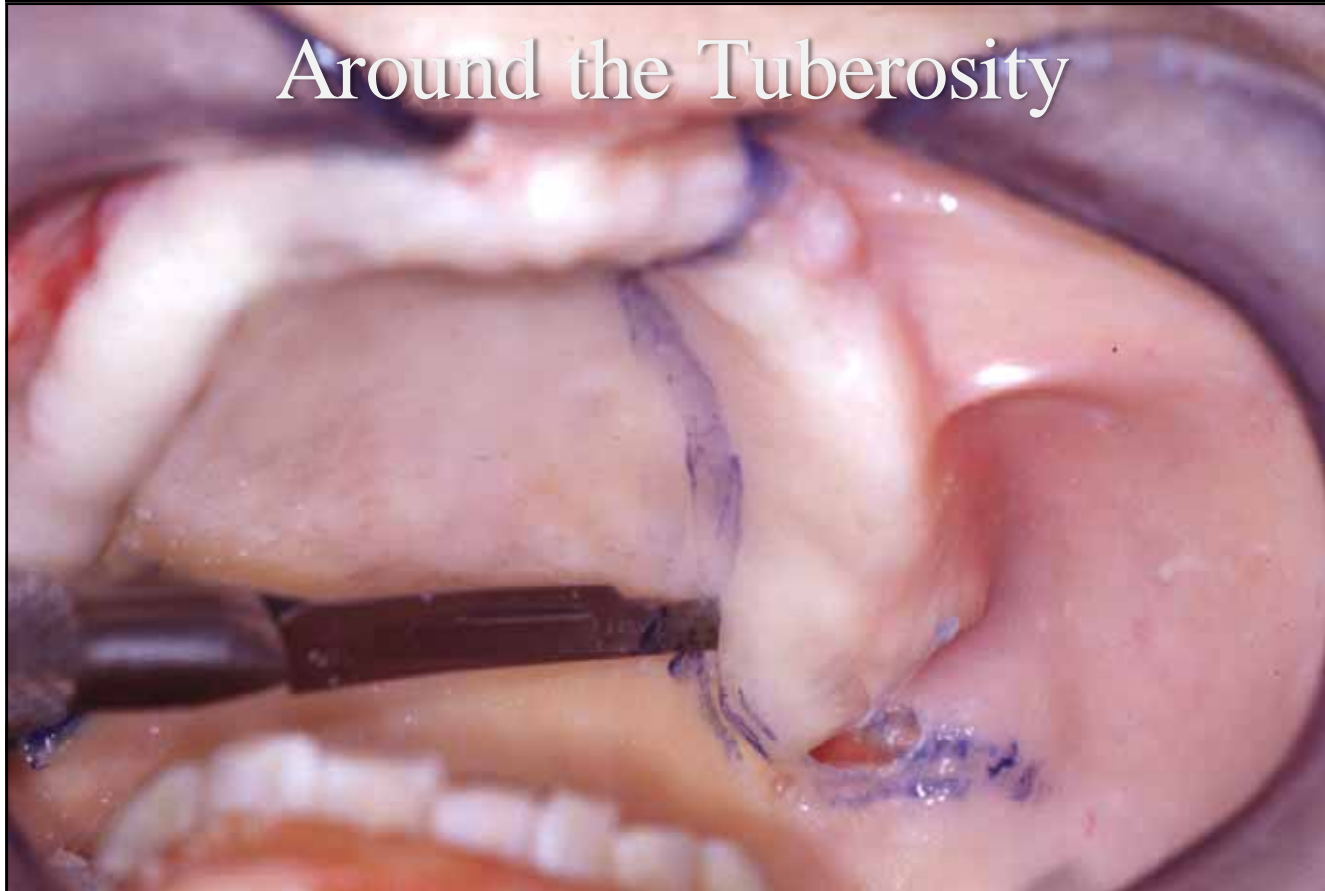
Incision Posterior to the Tuberosity



Menu



Around the Tuberosity



Menu



Palatal to the Ridge



Menu



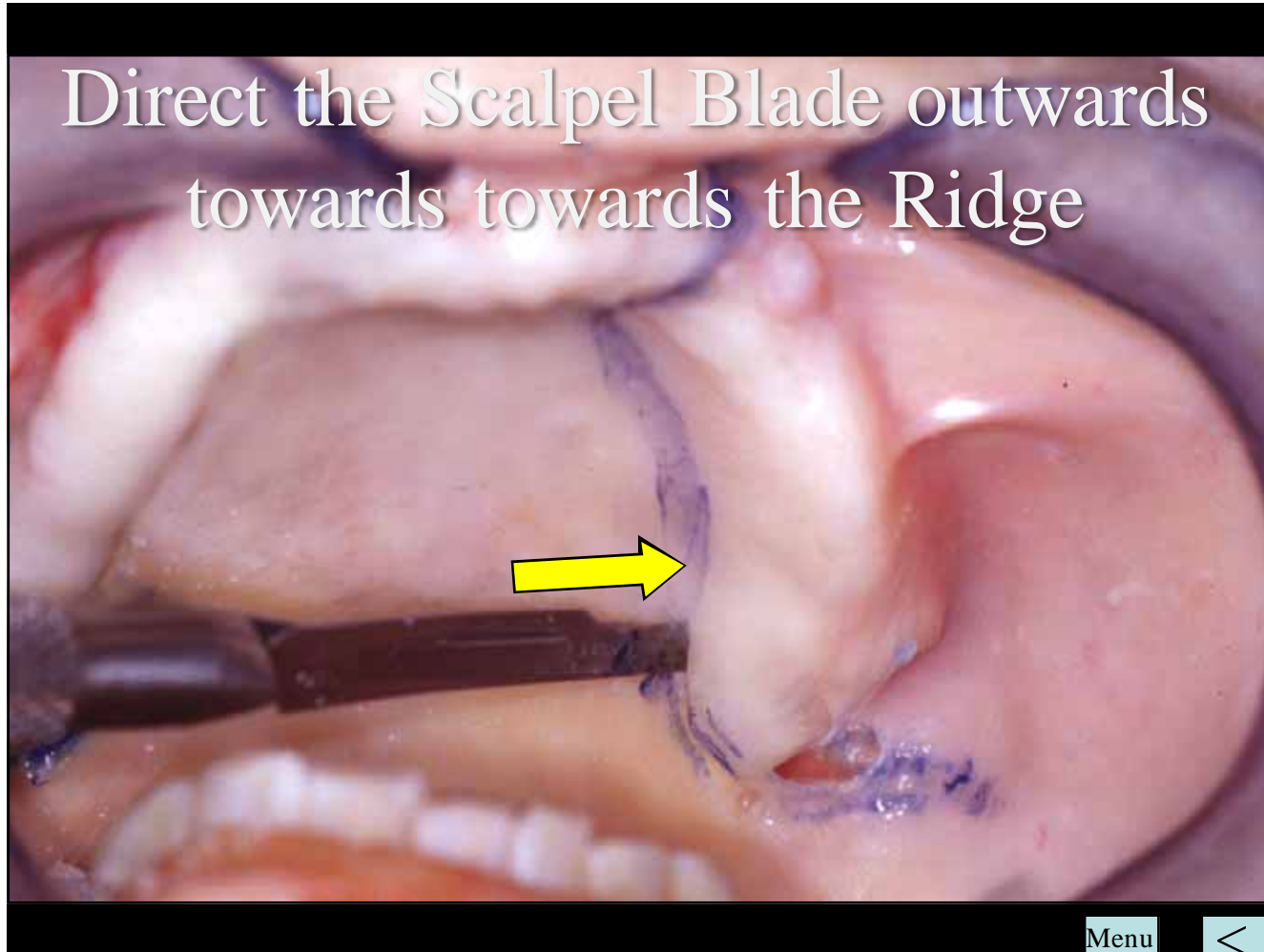
Keep the Scalpel Handle Close to the Ridge on the Opposite Side



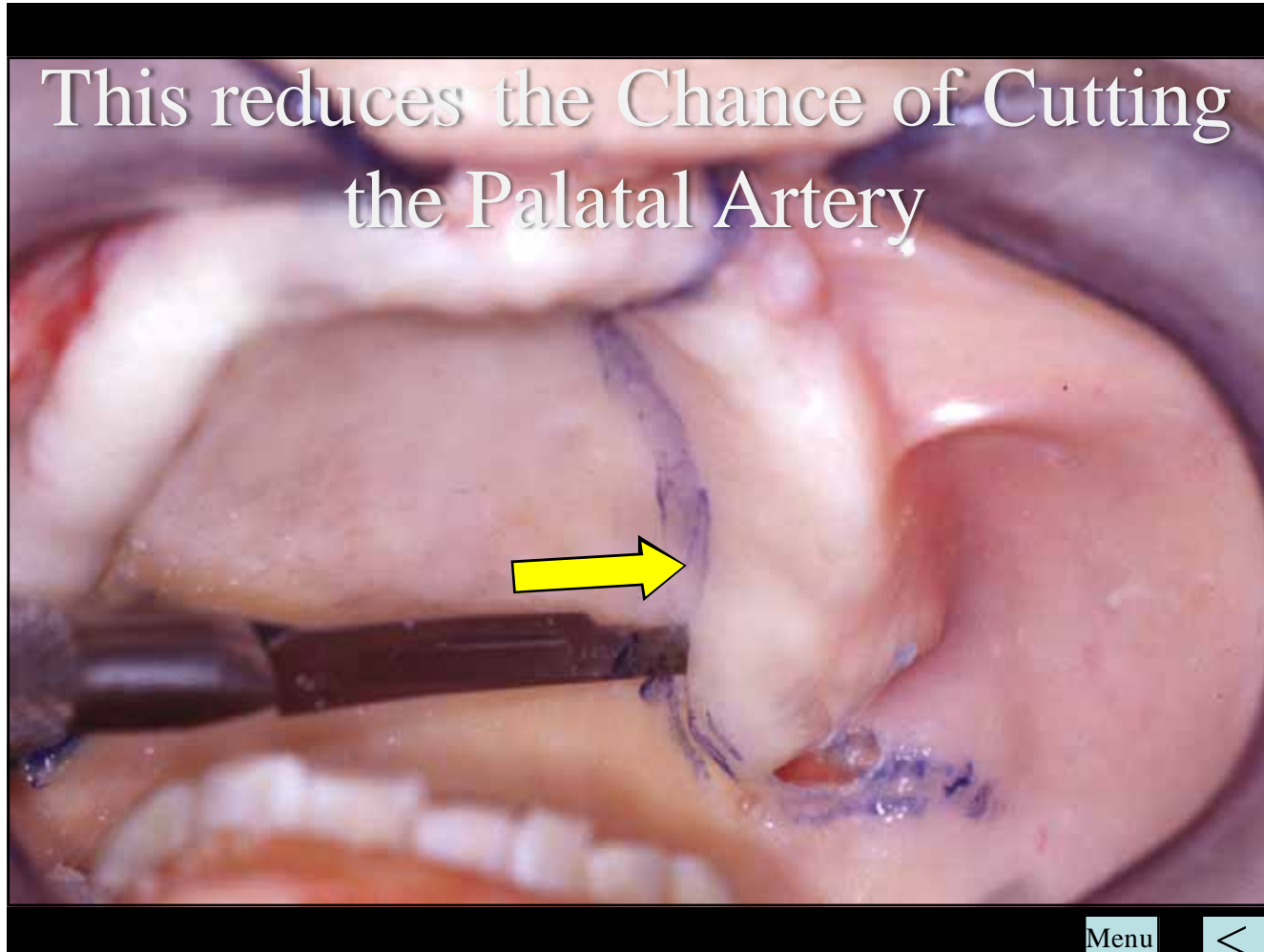
Menu



Direct the Scalpel Blade outwards
towards towards the Ridge

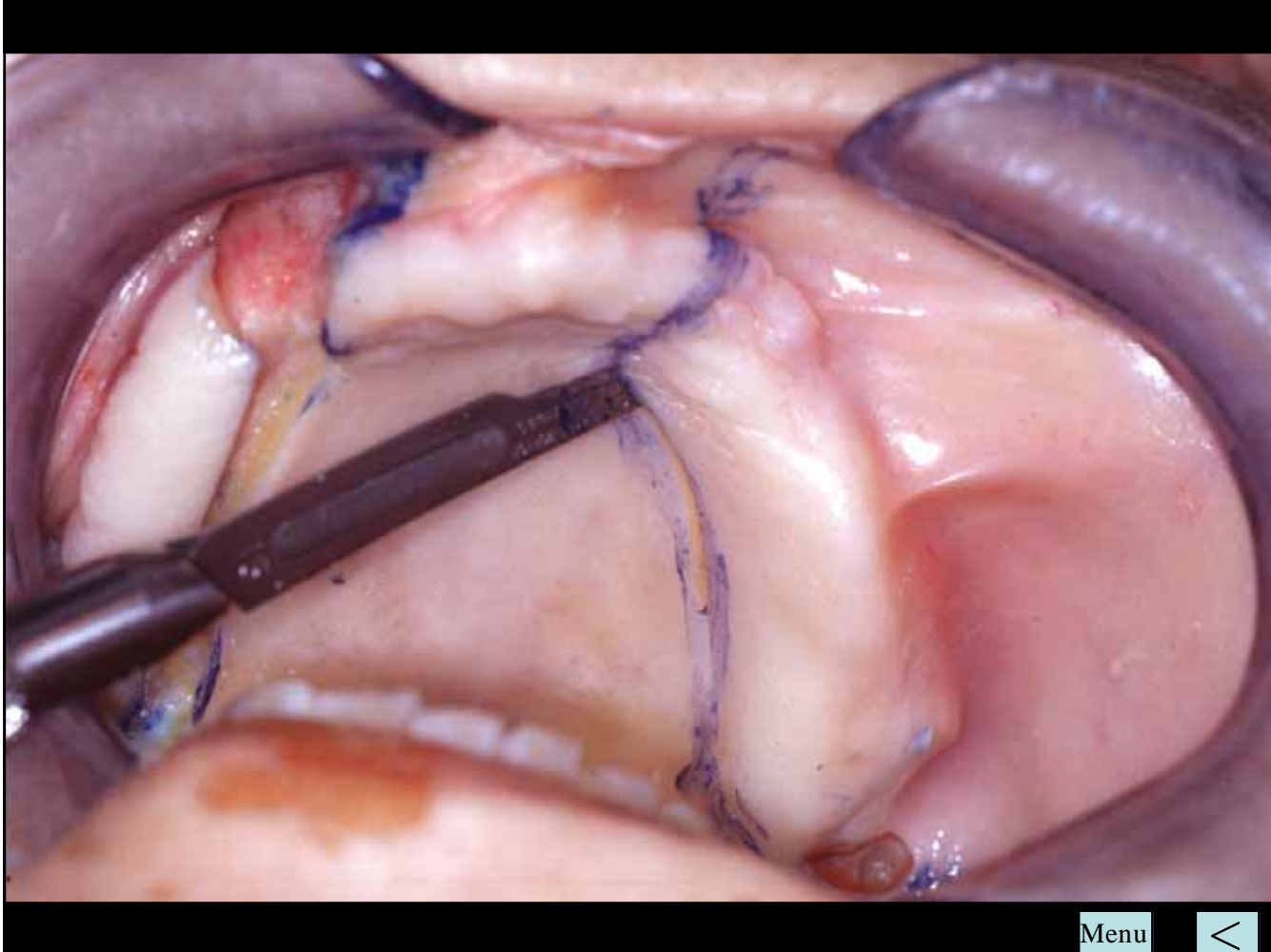


This reduces the Chance of Cutting
the Palatal Artery



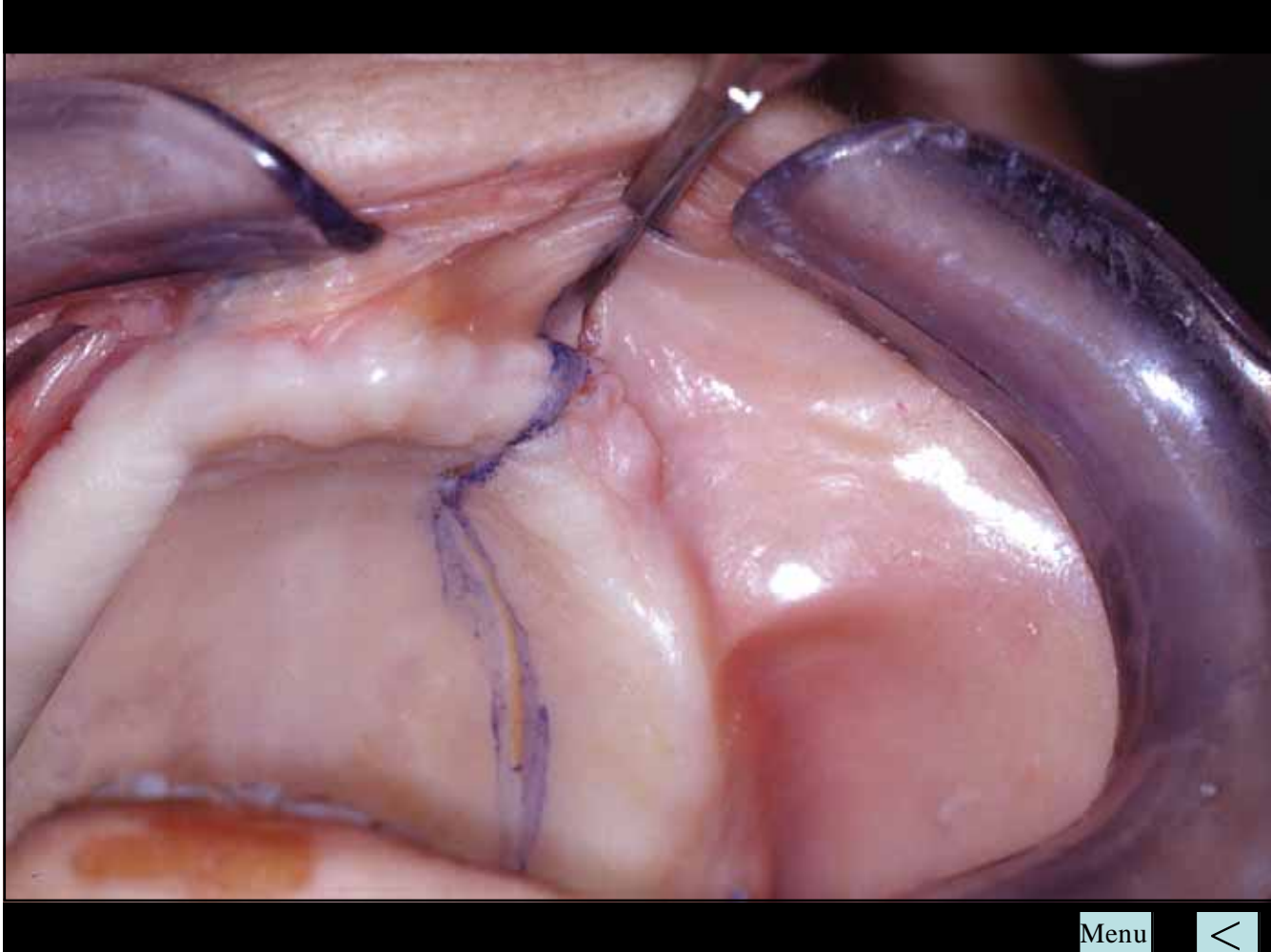
Menu





Menu





Menu



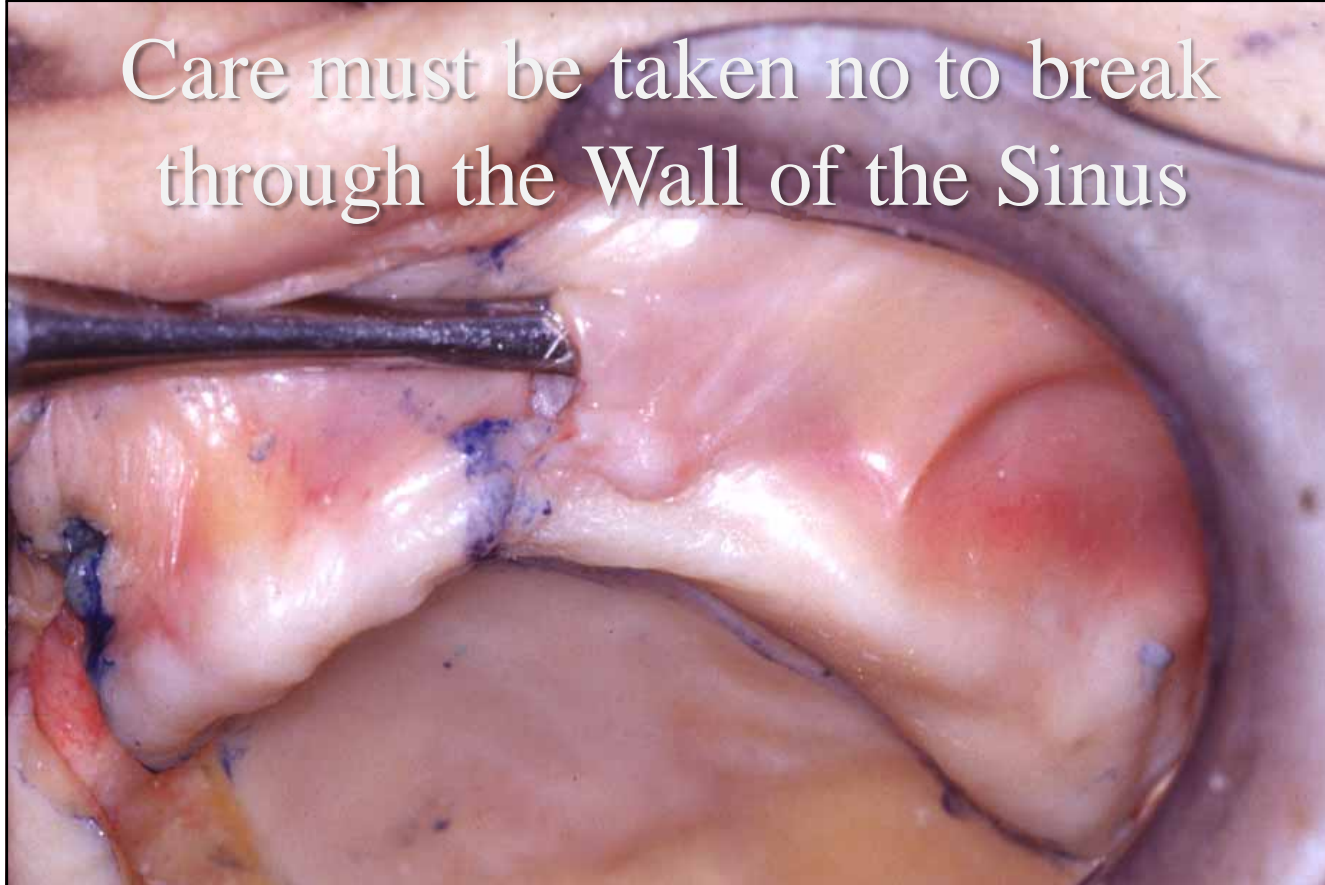
Start by elevating under the
Periosteum of the Unattached
Mucosa



Menu

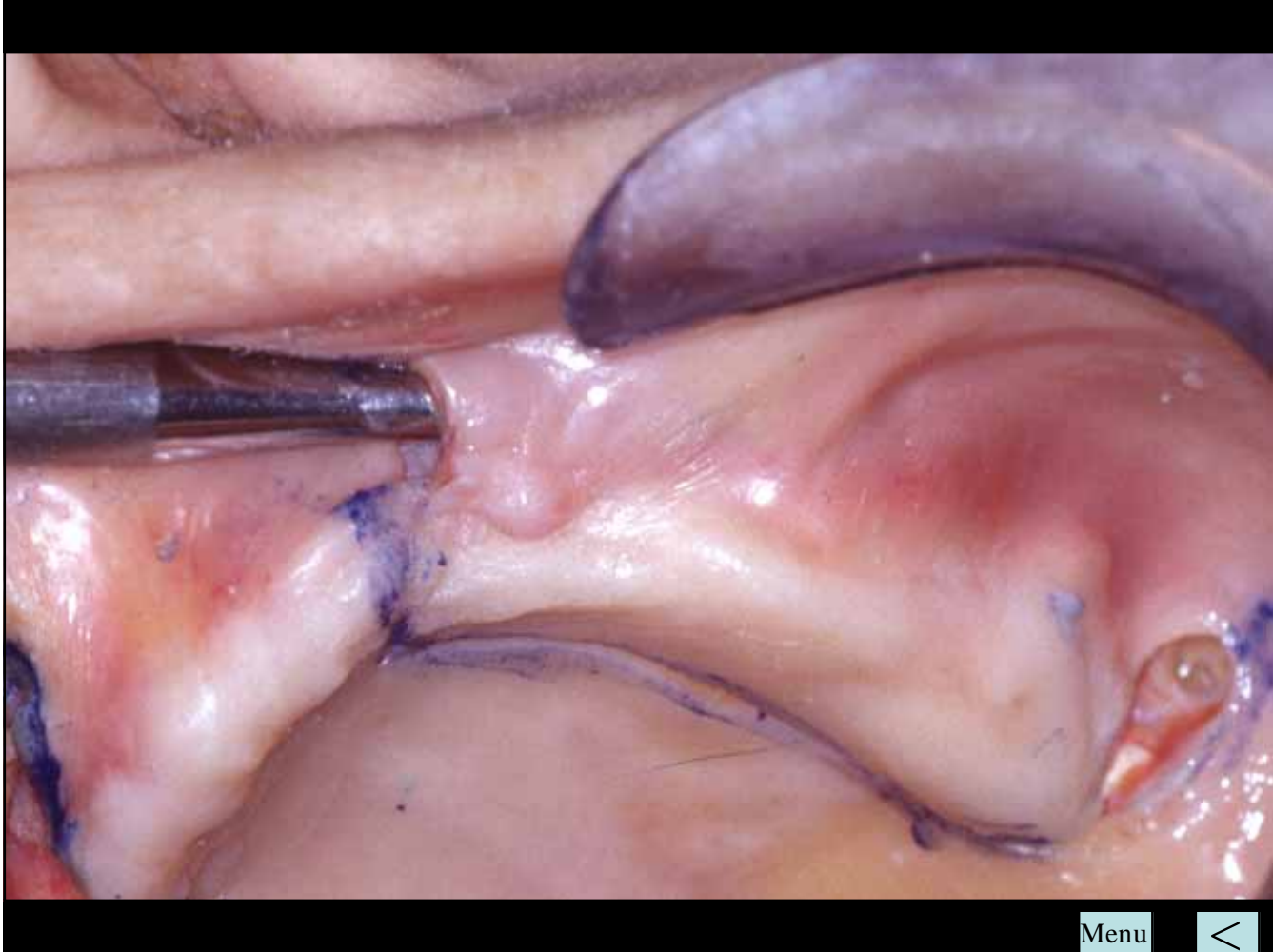


Care must be taken no to break
through the Wall of the Sinus

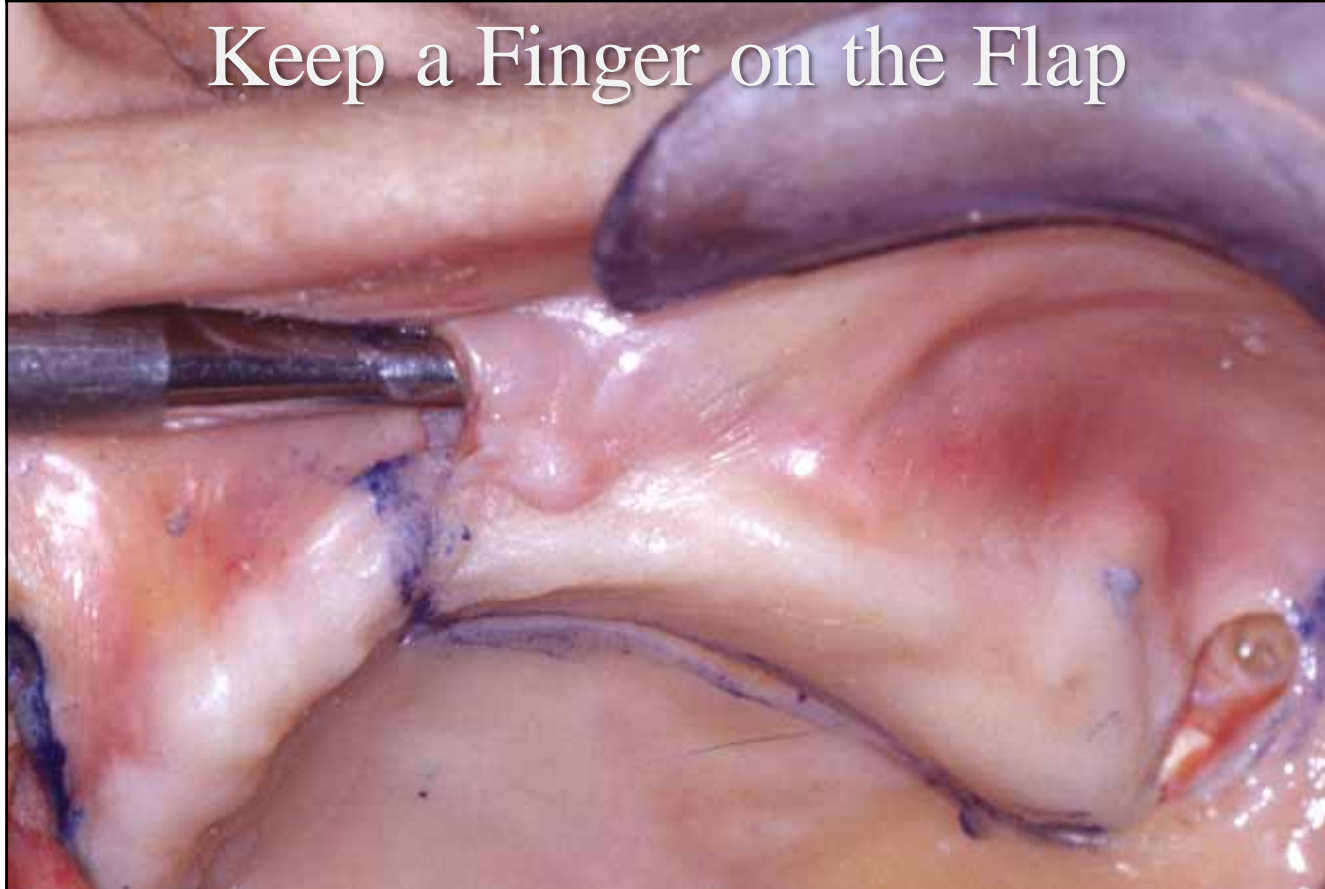


Menu





Keep a Finger on the Flap



Menu



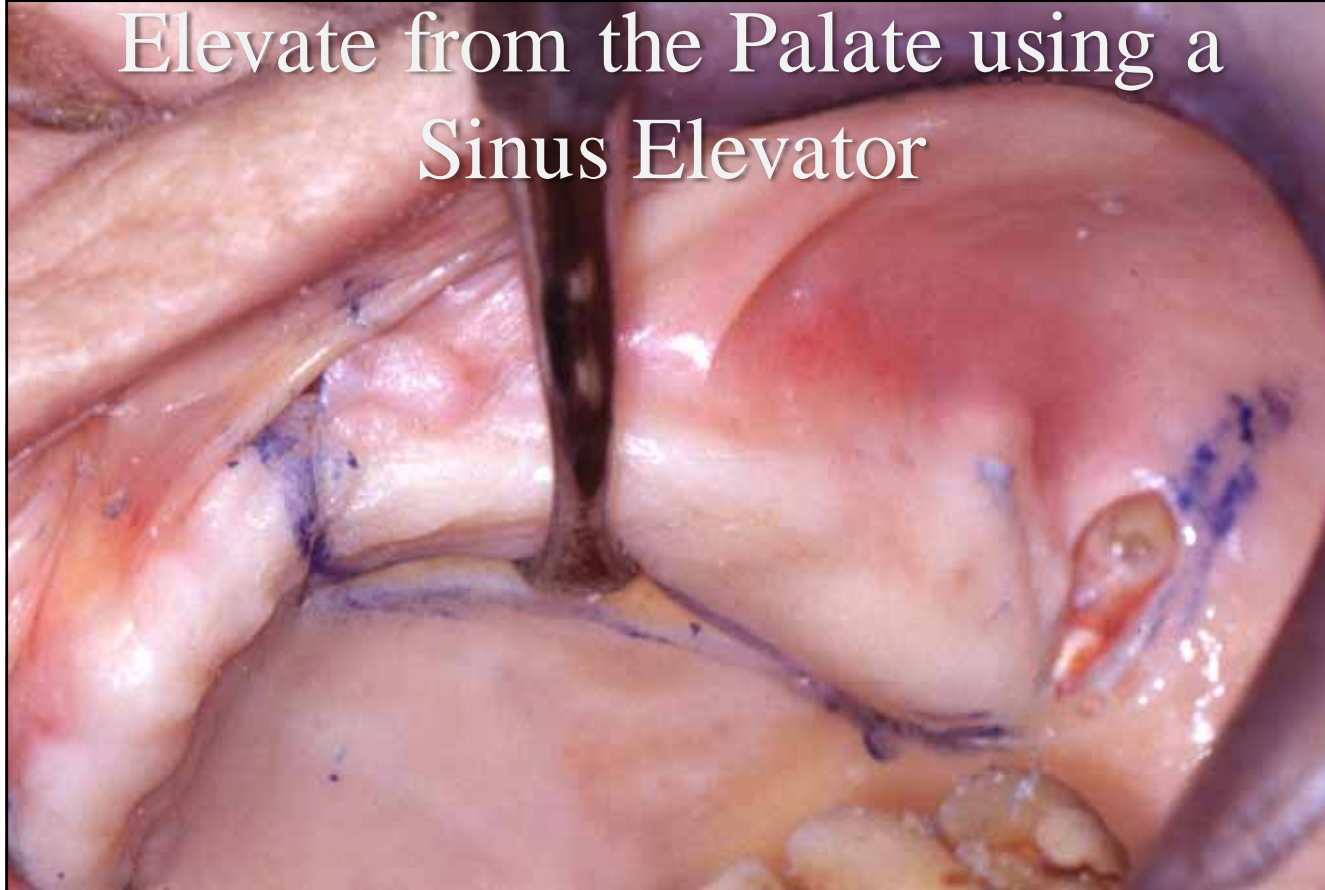
This helps prevent tearing of the Flap
if the Elevator Slips



Menu



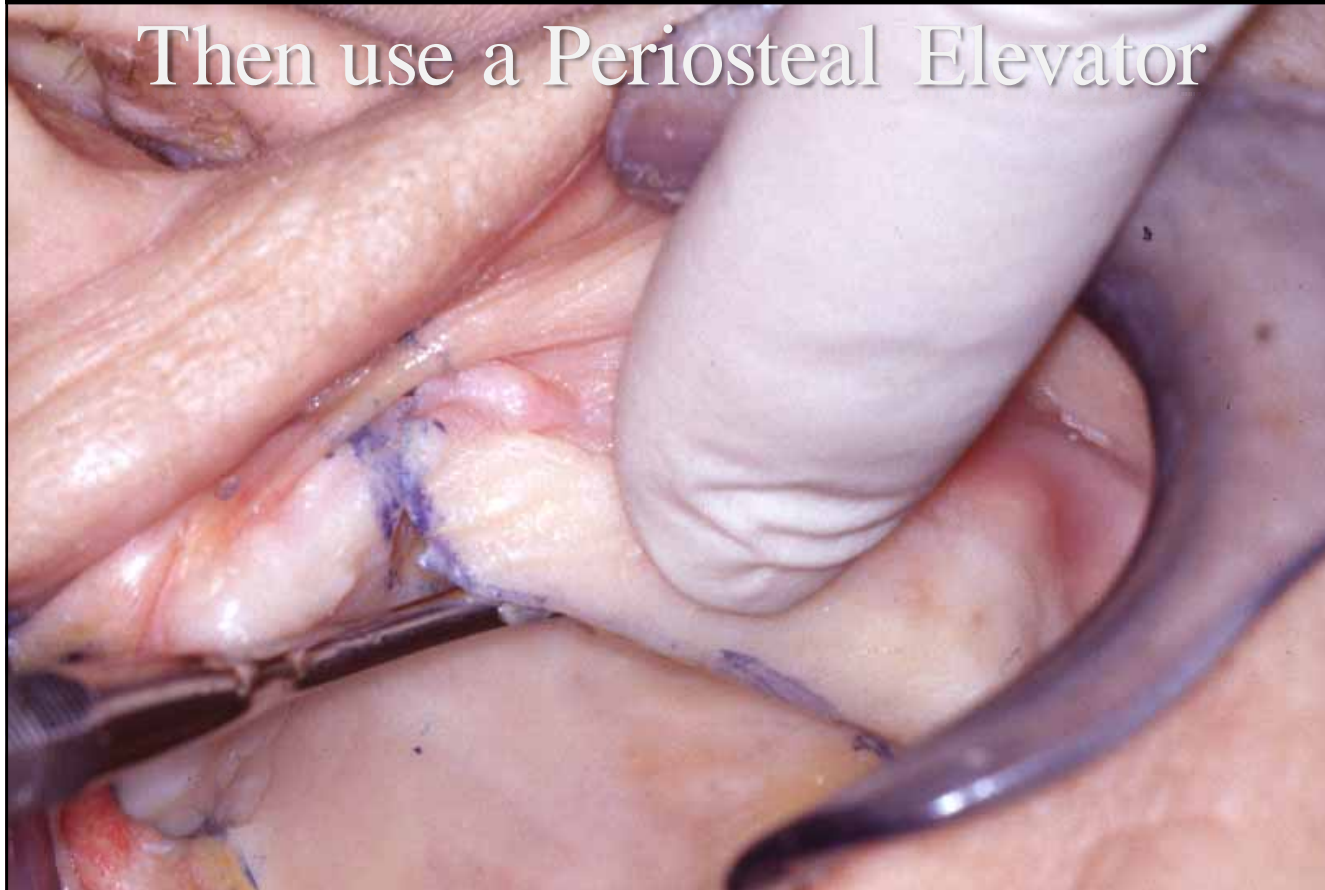
Elevate from the Palate using a
Sinus Elevator



Menu



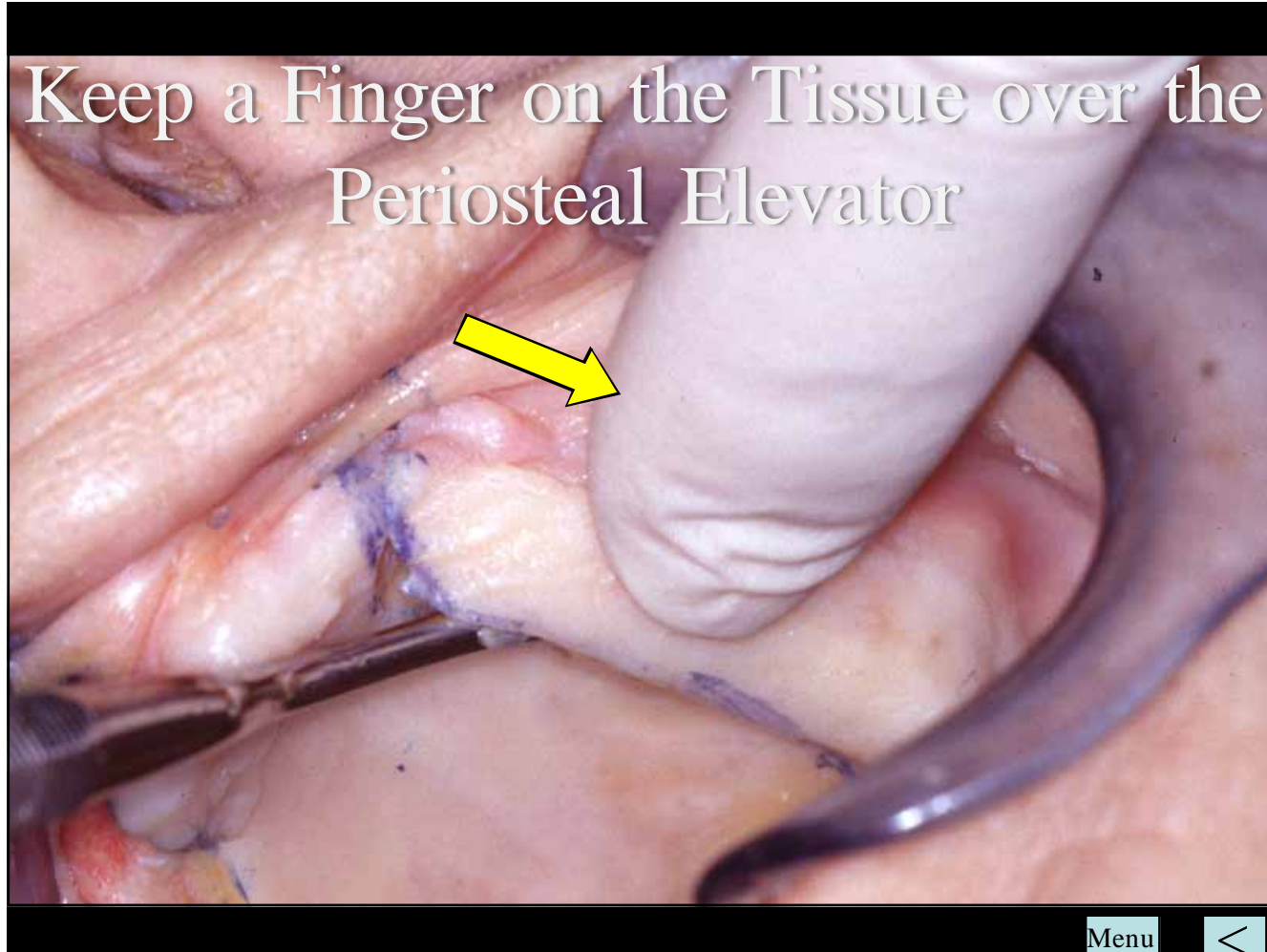
Then use a Periosteal Elevator



Menu



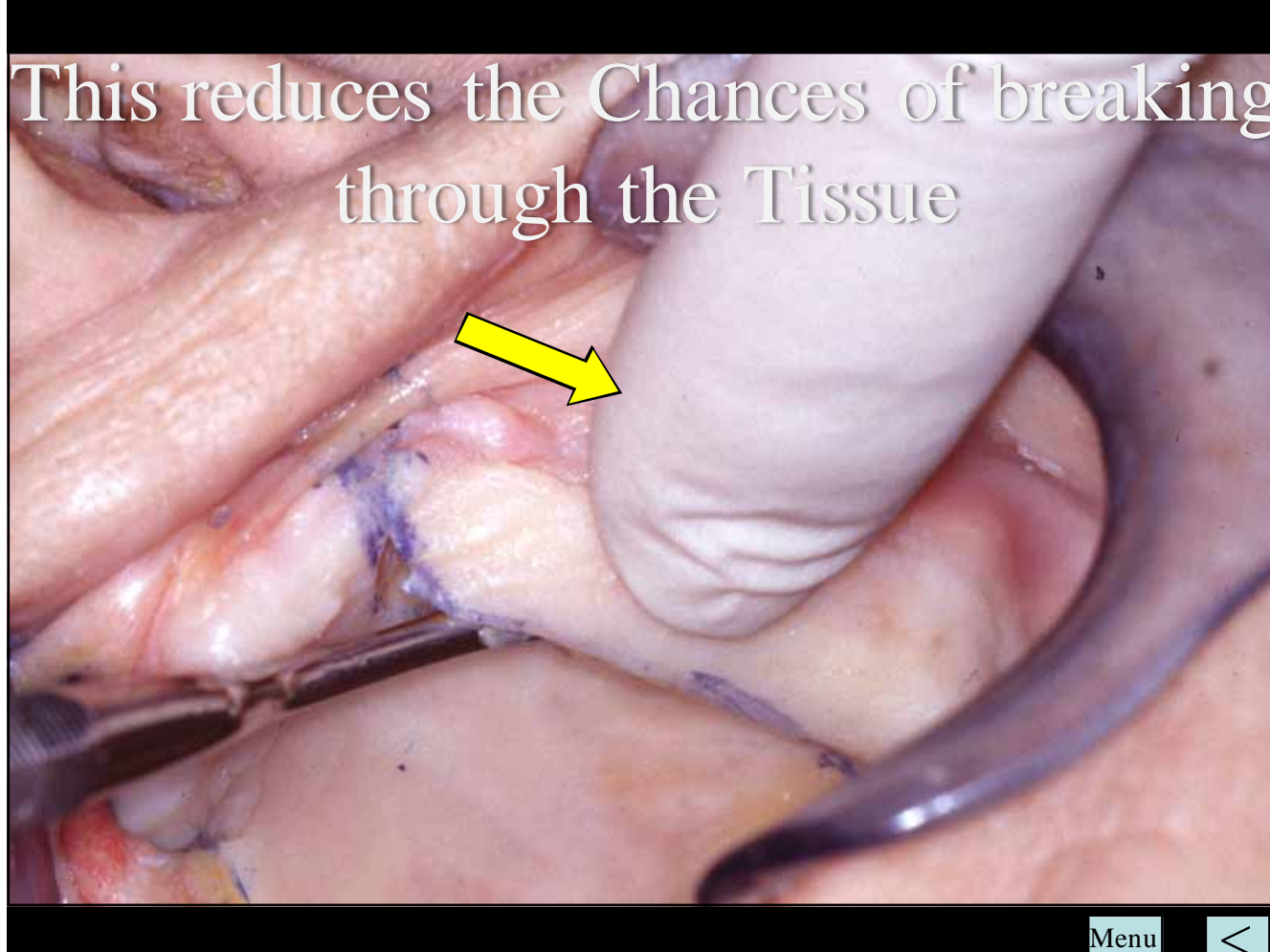
Keep a Finger on the Tissue over the Periosteal Elevator



Menu



This reduces the Chances of breaking through the Tissue



Menu

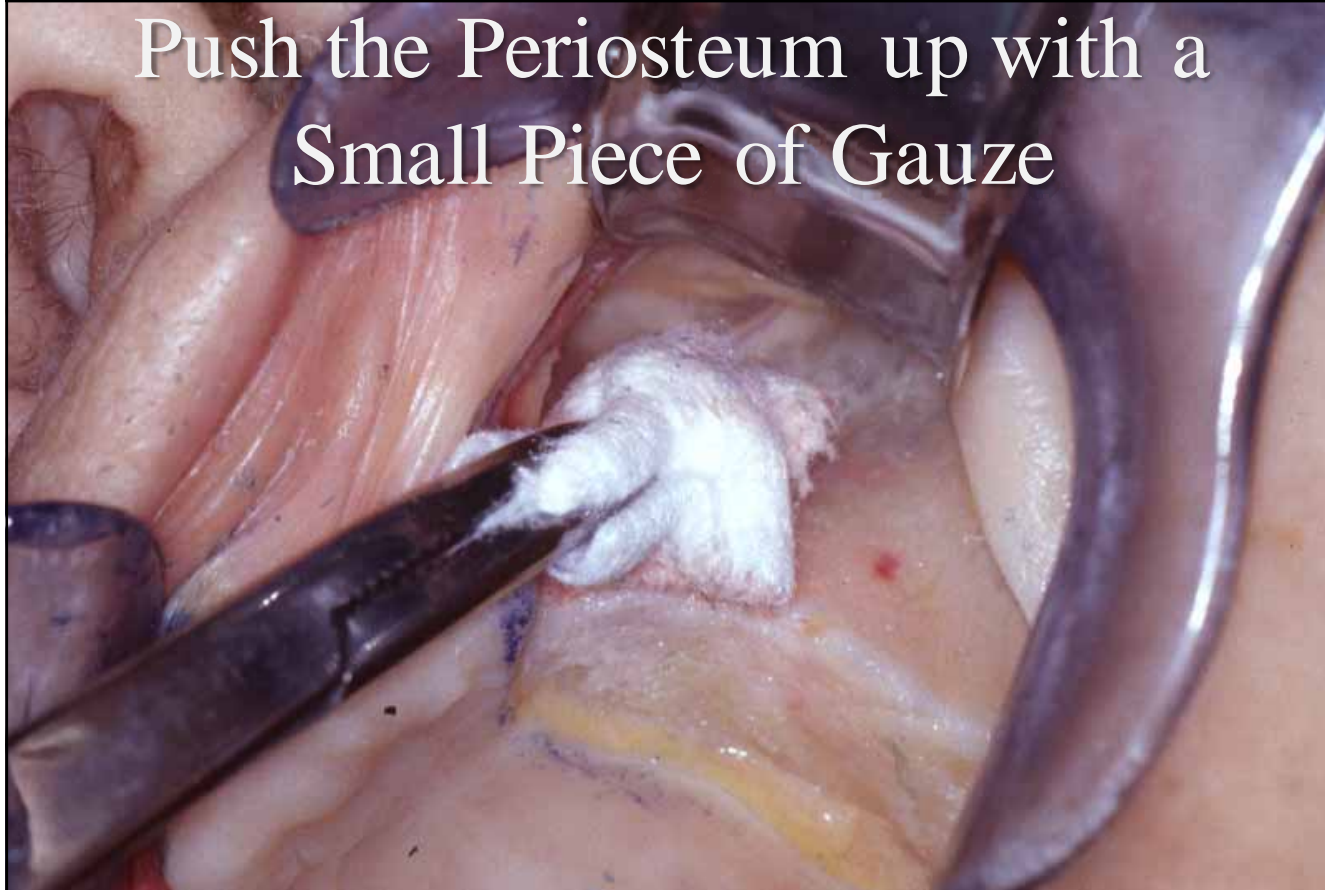




Menu



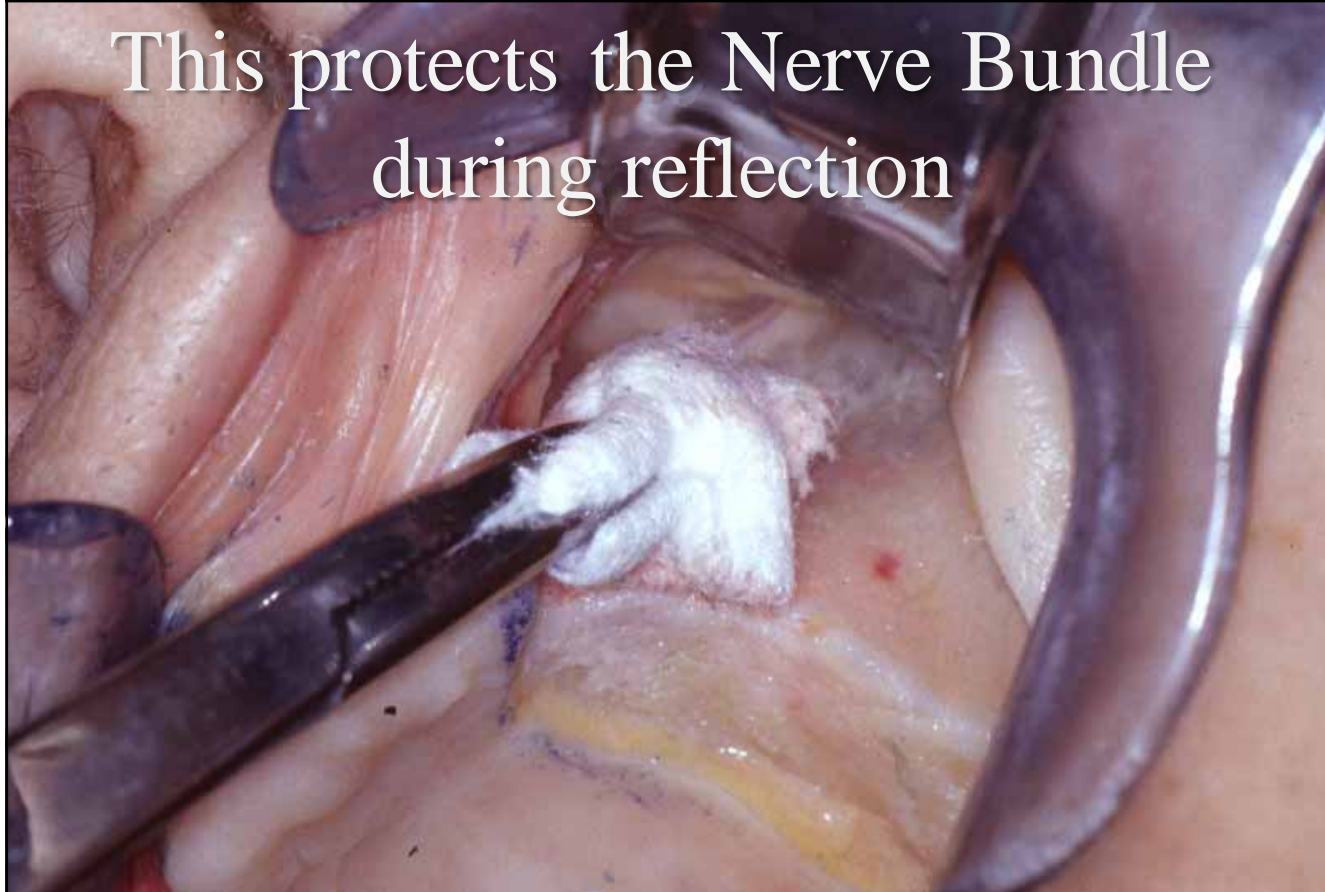
Push the Periosteum up with a
Small Piece of Gauze



Menu

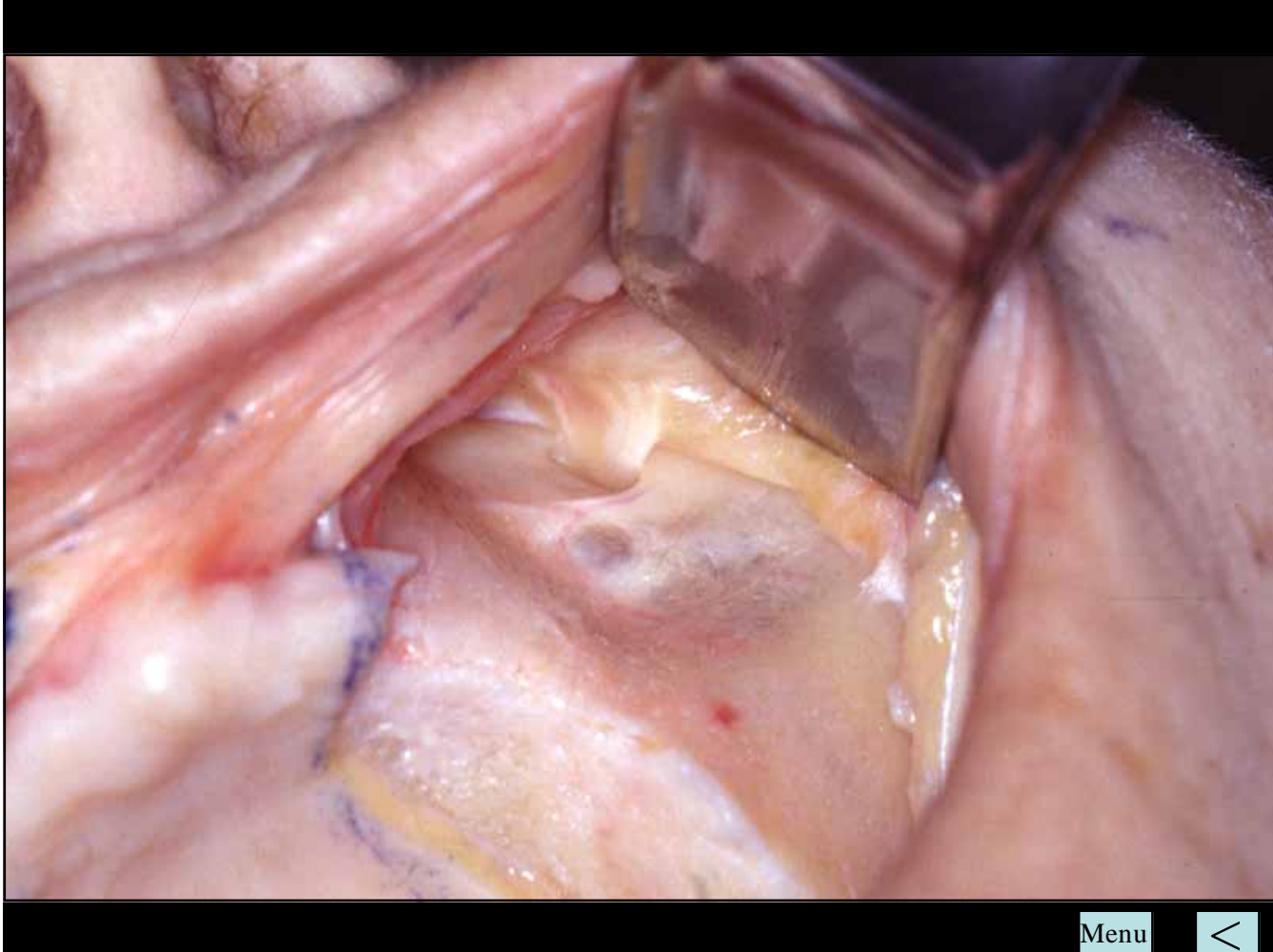


This protects the Nerve Bundle
during reflection



Menu

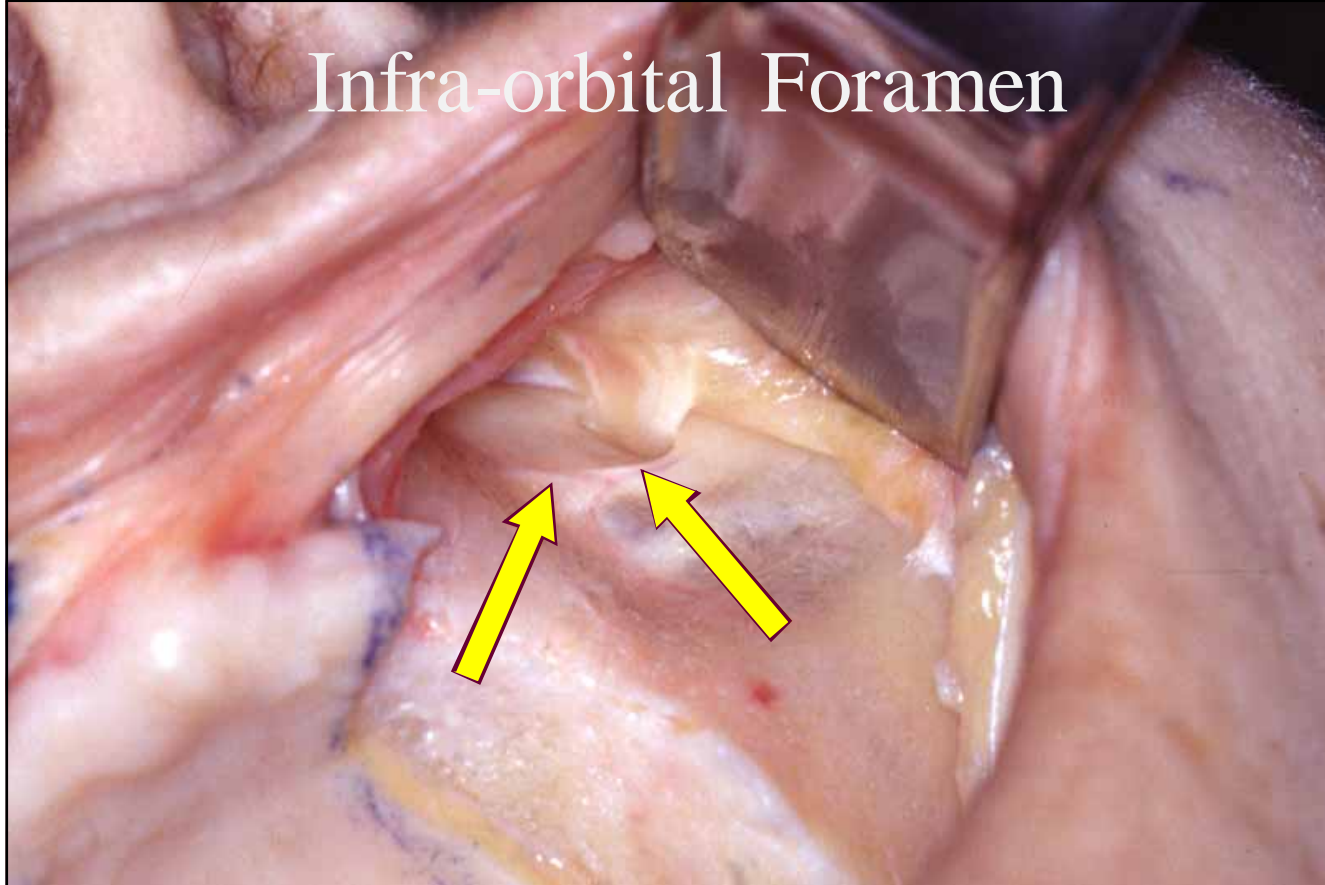




Menu



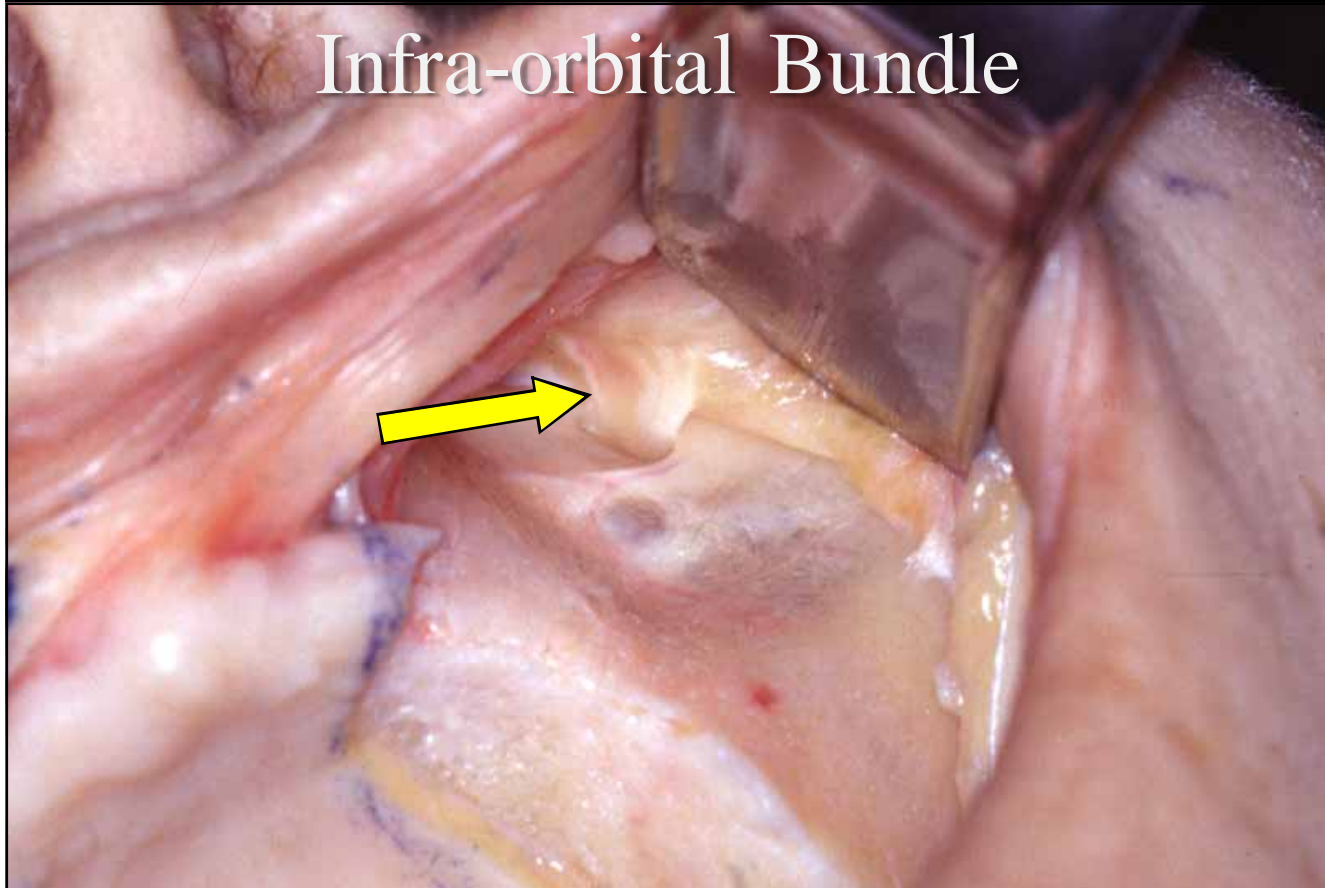
Infra-orbital Foramen



Menu



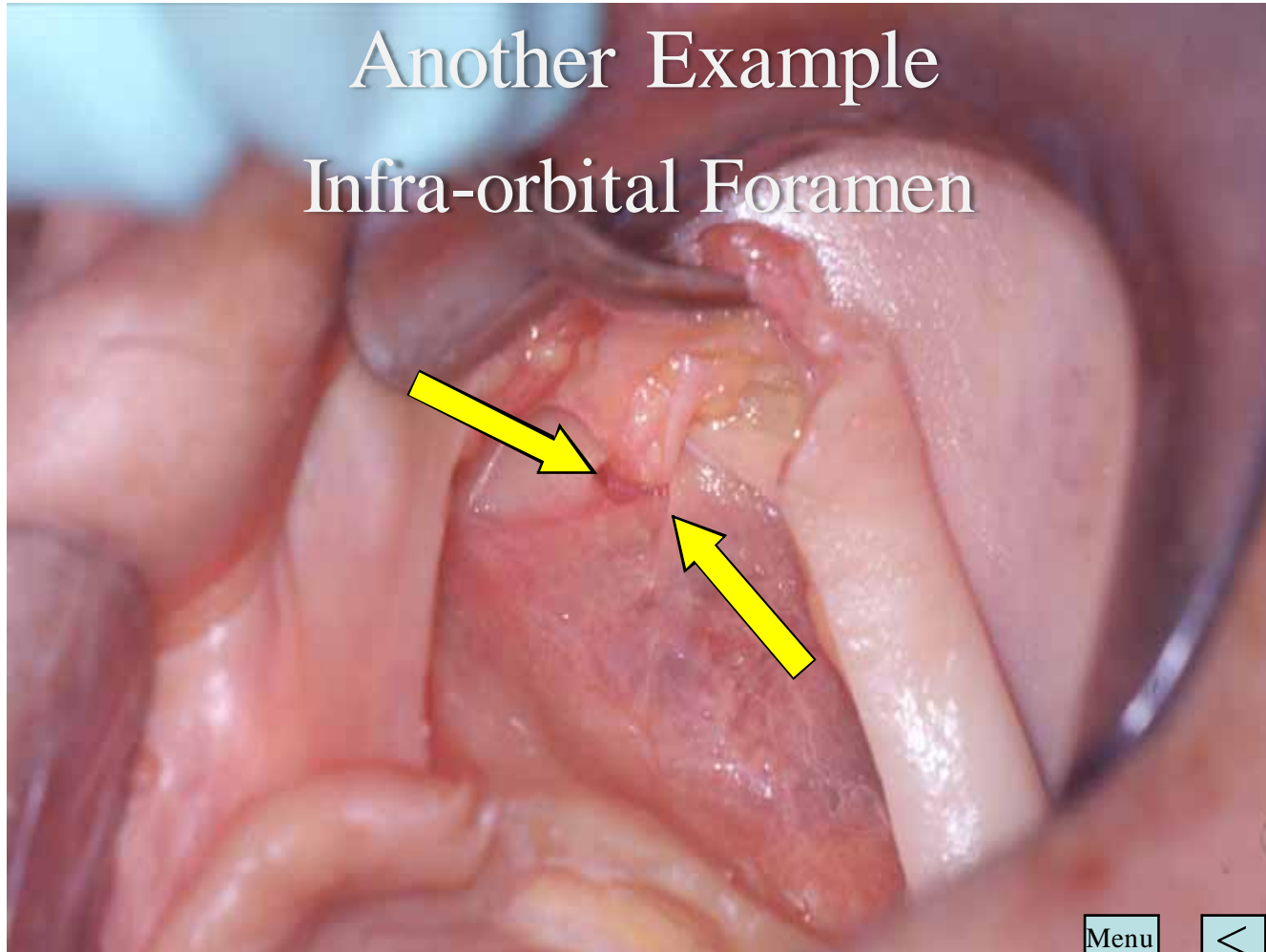
Infra-orbital Bundle



Menu



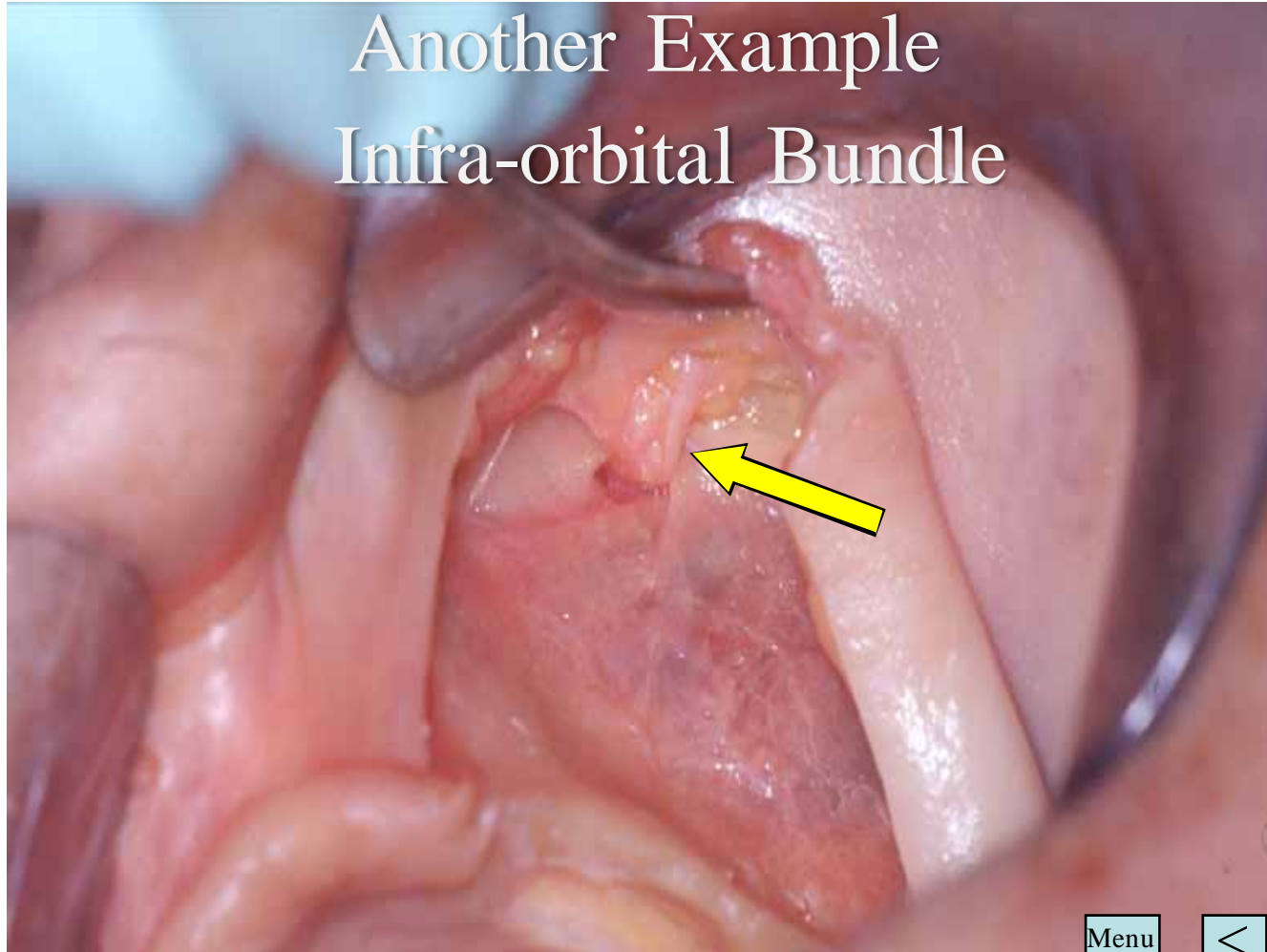
Another Example
Infra-orbital Foramen



Menu



Another Example Infra-orbital Bundle



Menu





The End

Menu

