

An anatomical illustration of a human skull in a frontal view, showing the infra-orbital bundle. The bundle is highlighted in yellow and consists of the infra-orbital artery, vein, and nerve. The text "Tracing the Infra-Orbital Bundle" is overlaid in a large, stylized font. The word "Tracing" is in red with a white outline, and "the Infra-Orbital Bundle" is in white with a red outline. The background is a solid blue color.

# Tracing the Infra-Orbital Bundle

Menu



The Infra-  
Orbital  
Nerve

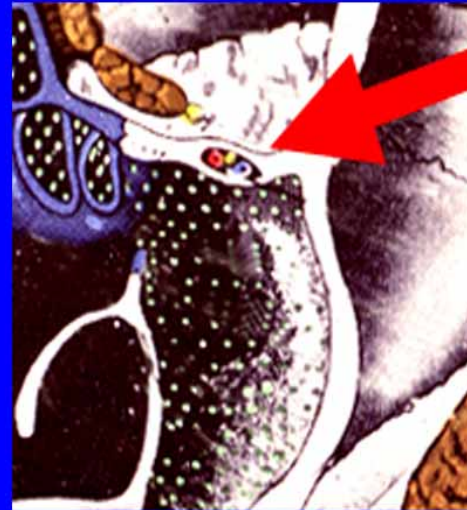


Menu





# Infra-Orbital Nerve and Vessels



Menu





to the  
Maxillary  
Nerve

Menu



# Tracing the Infra-orbital Bundle

- Remove the Rest of the Buccal Wall of the Maxillary Sinus
- This enables better observation of the Structures in the Walls of the Sinus

Menu



## Tracing the Infra-orbital Bundle

- Probe back into the Infra- orbital Canal
- Examine the Roof and Medial wall of the Sinus for the Course of the Infra-orbital Bundle

Menu



The End

Menu

