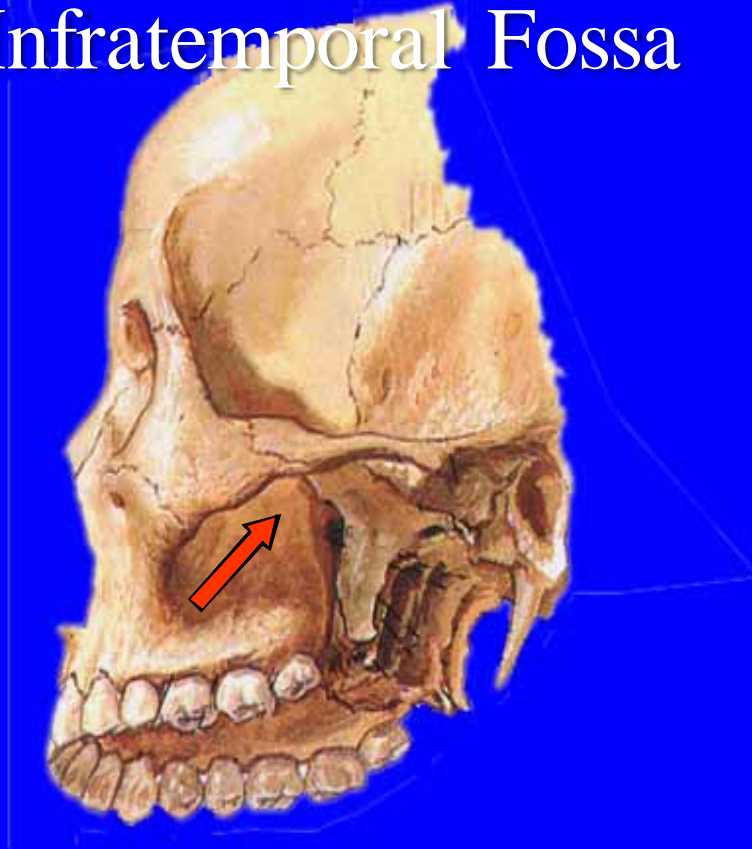


Dissection
of the
Pterygo-Maxillary
Fossa

Menu

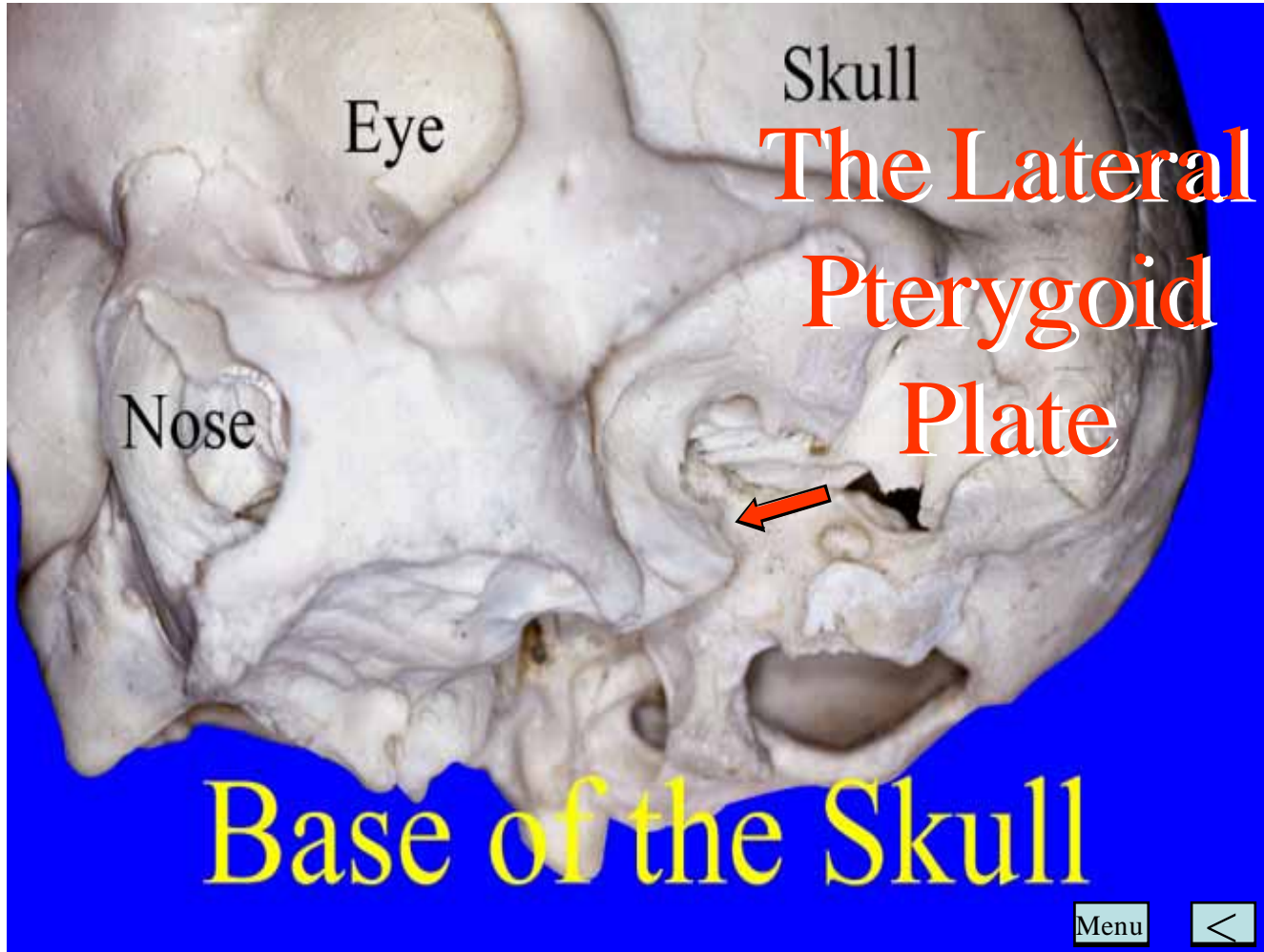


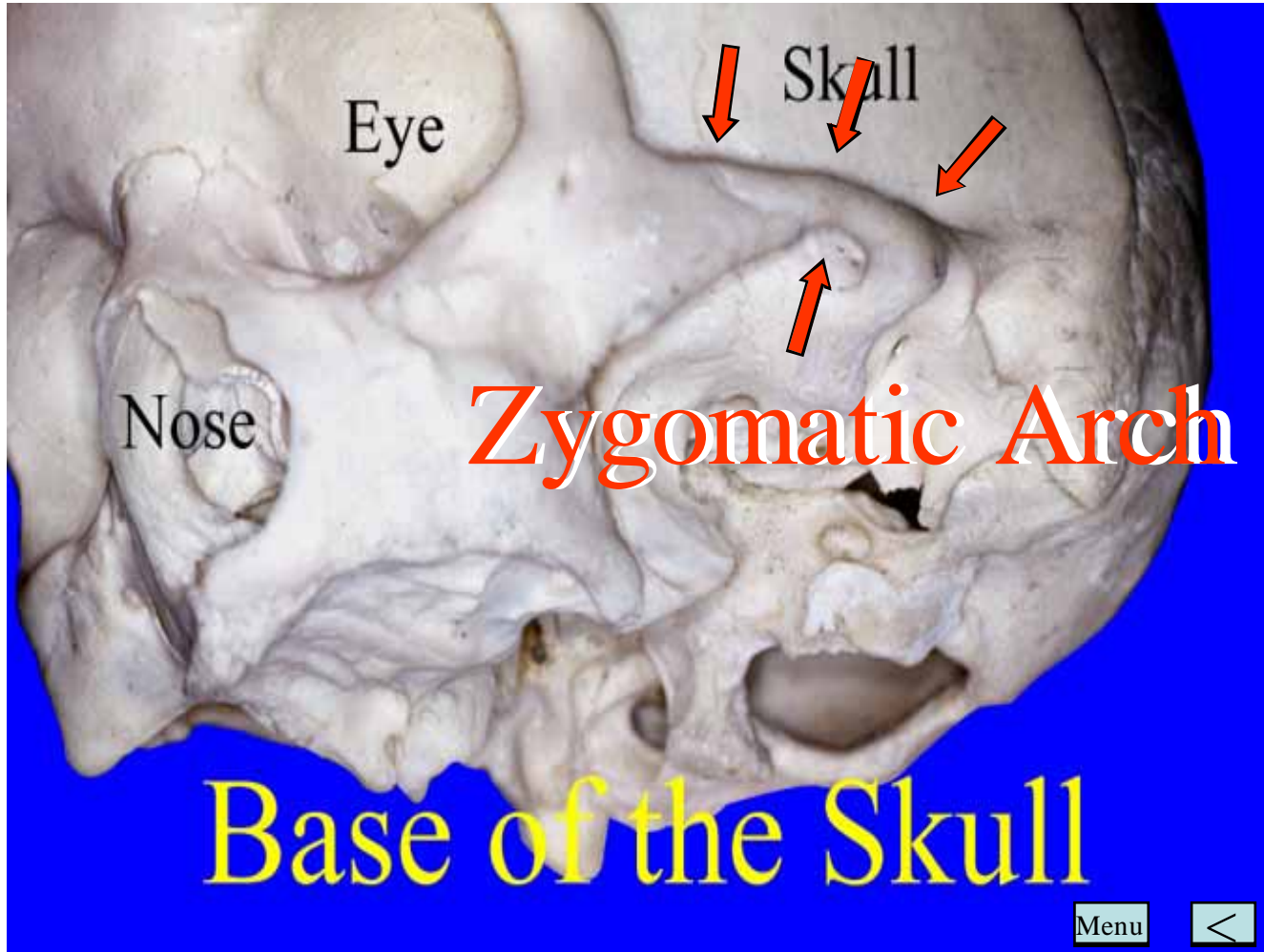
Infratemporal Fossa

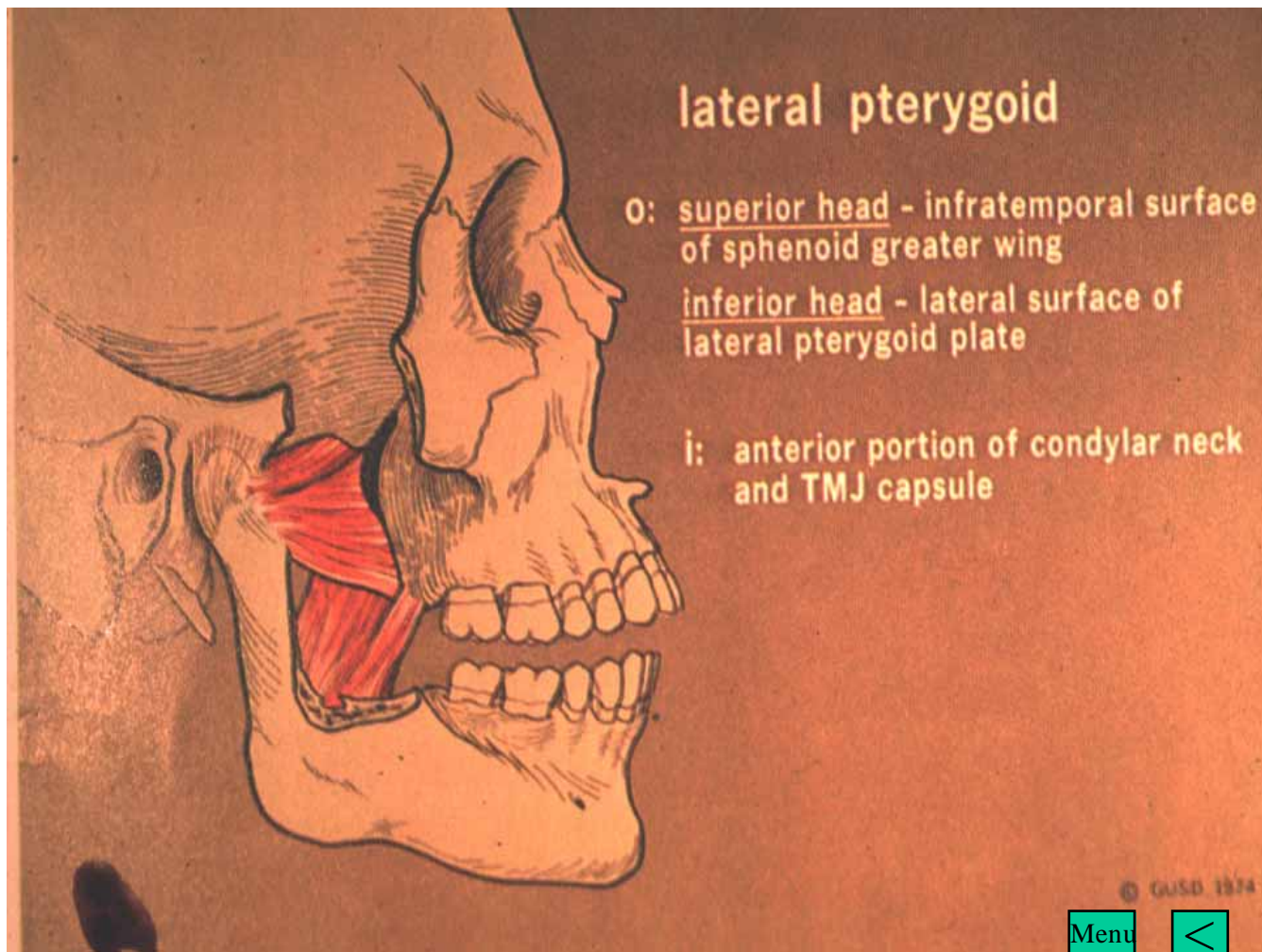


Menu









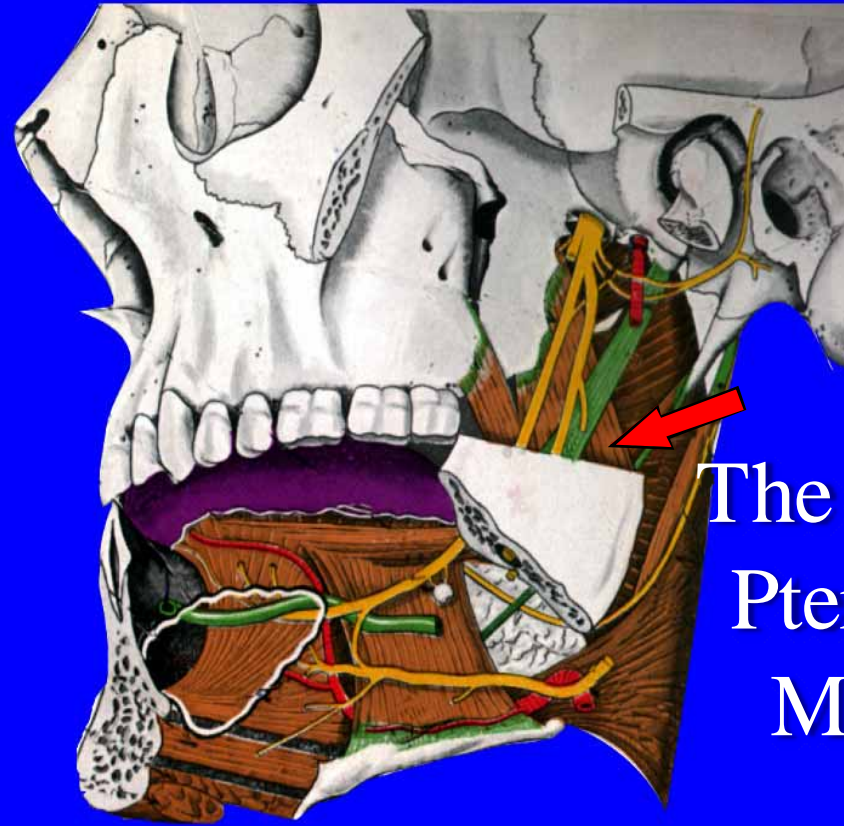
lateral pterygoid

- O: superior head - infratemporal surface of sphenoid greater wing
- inferior head - lateral surface of lateral pterygoid plate
- i: anterior portion of condylar neck and TMJ capsule

© GUSB 1974

Menu



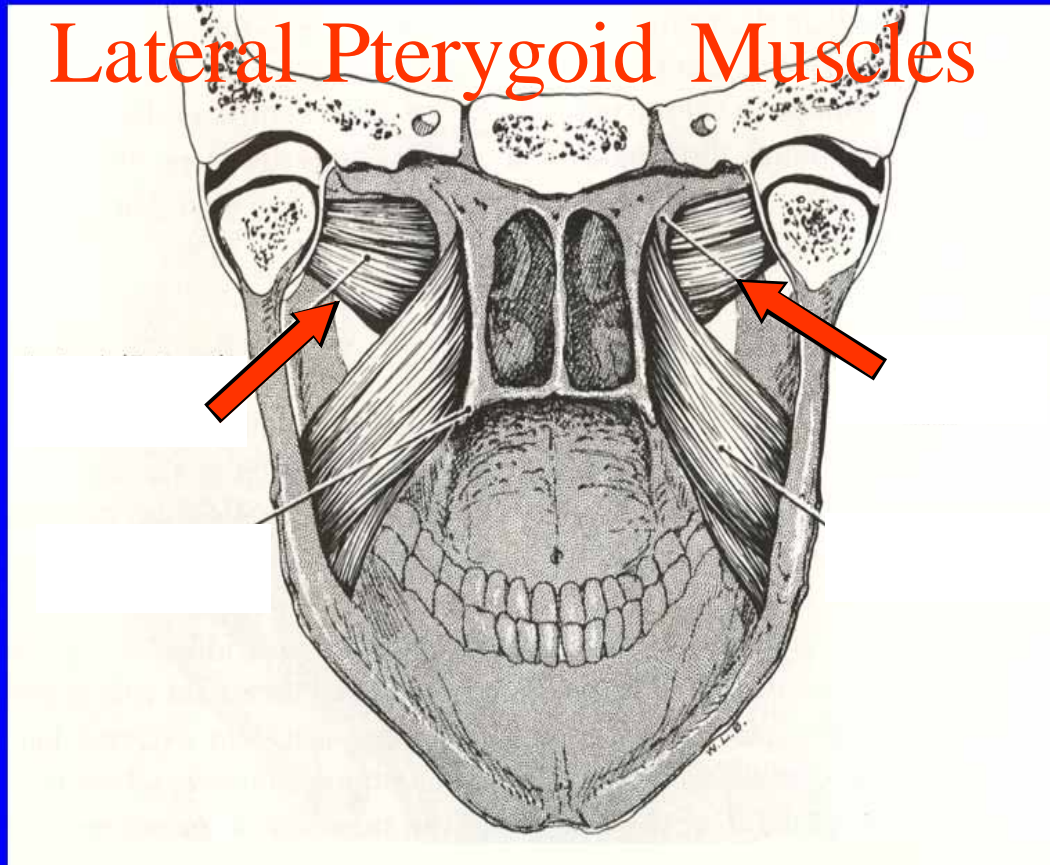


The Medial
Pterygoid
Muscle

Menu



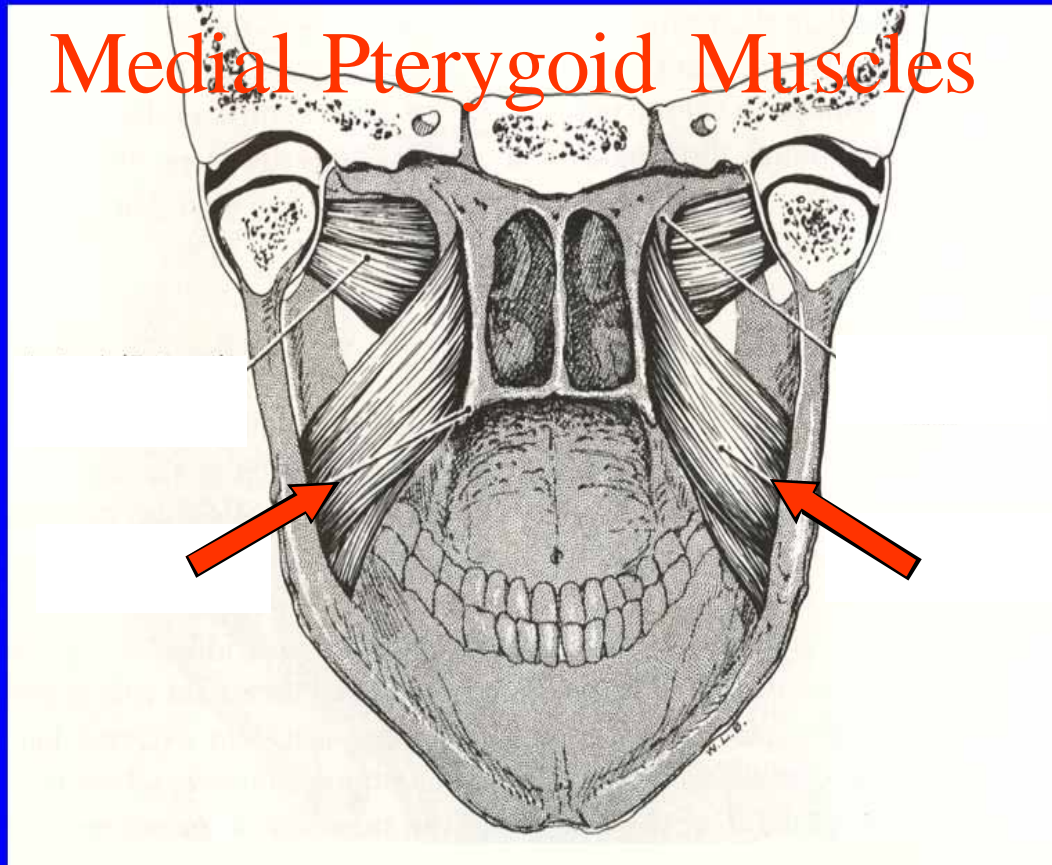
Lateral Pterygoid Muscles



Menu

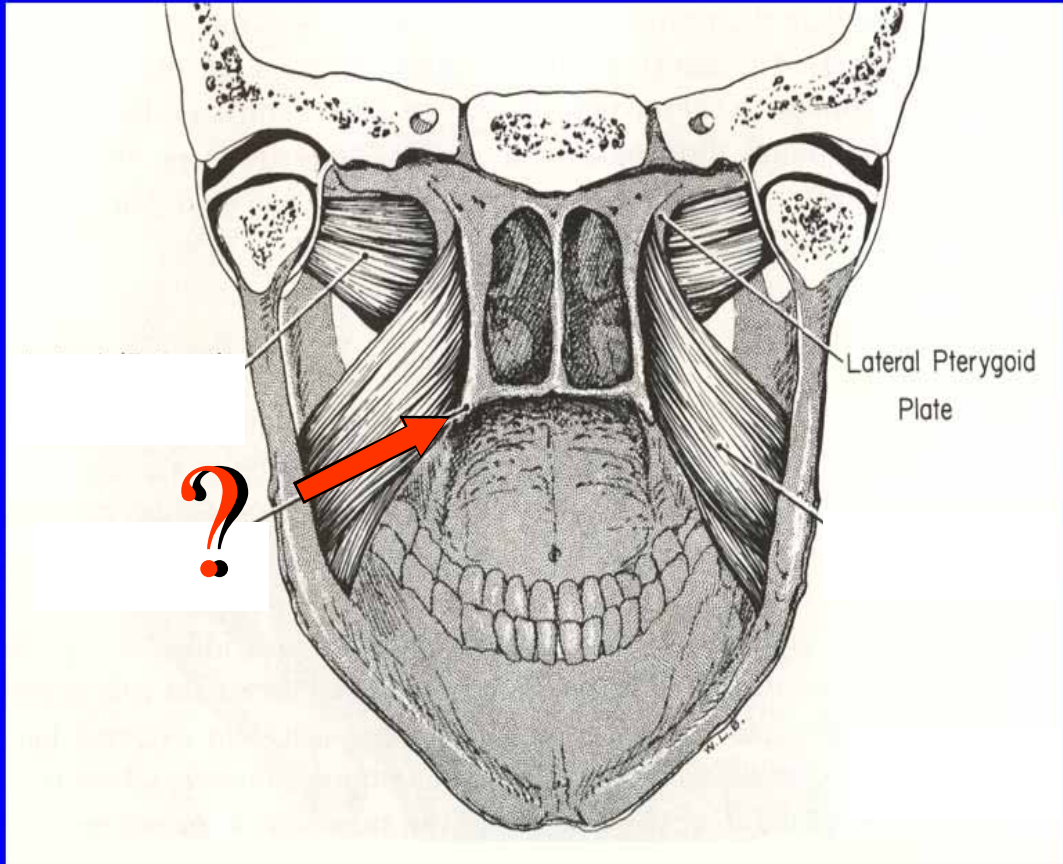


Medial Pterygoid Muscles



Menu

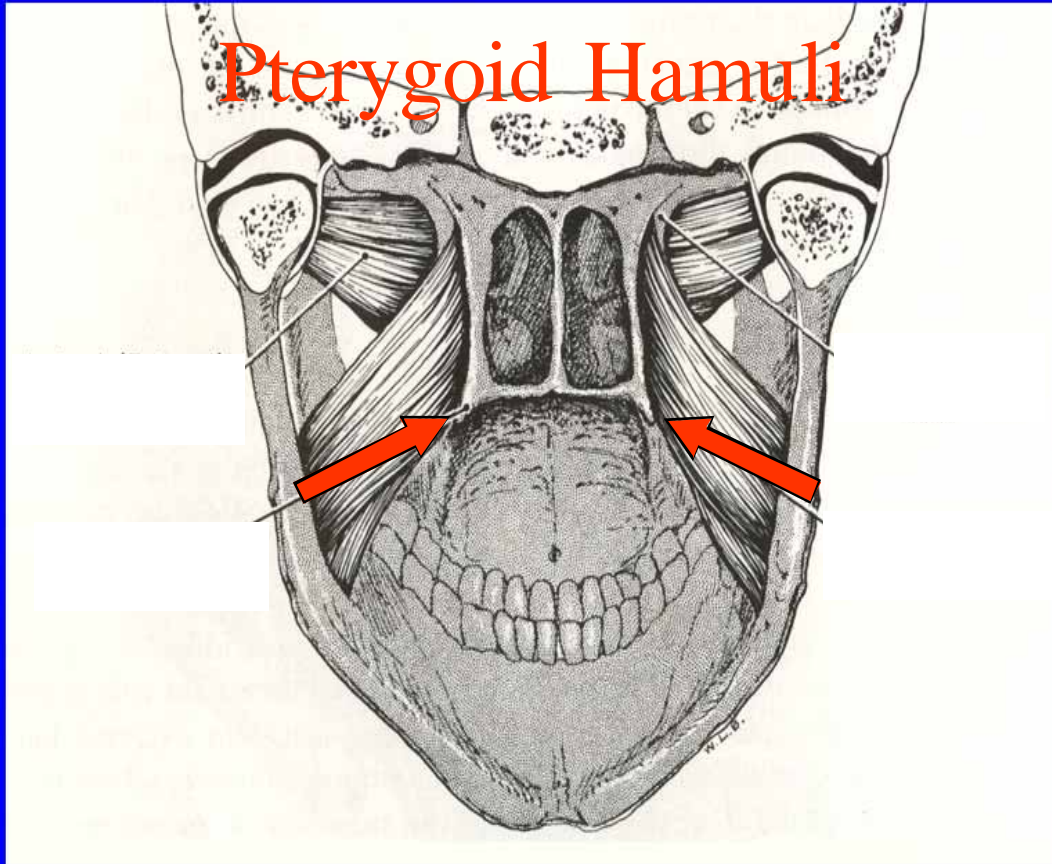




Menu

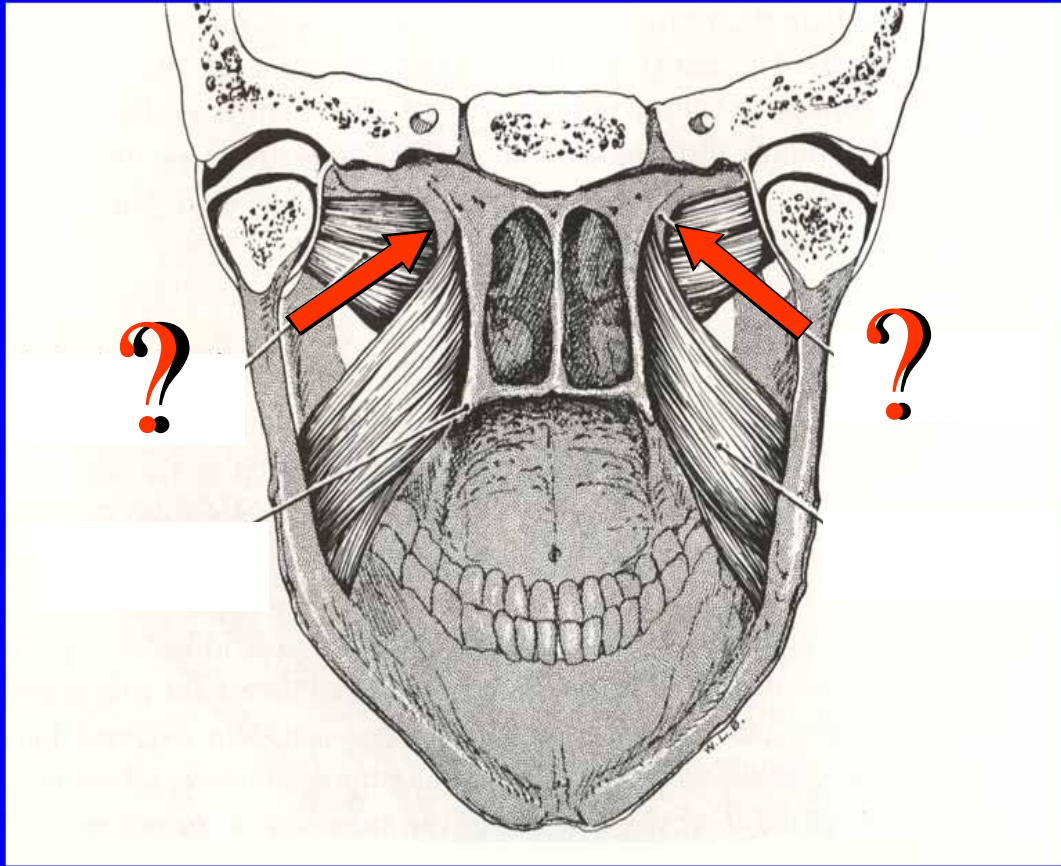


Pterygoid Hamuli



Menu

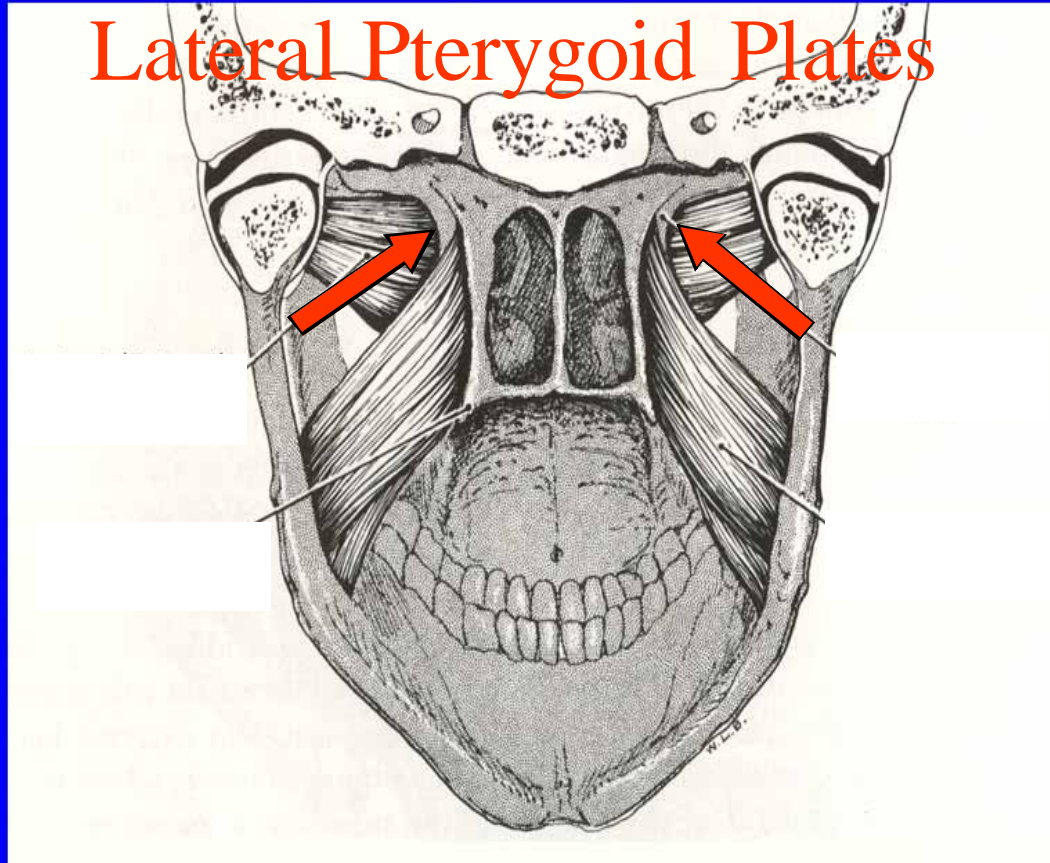




Menu

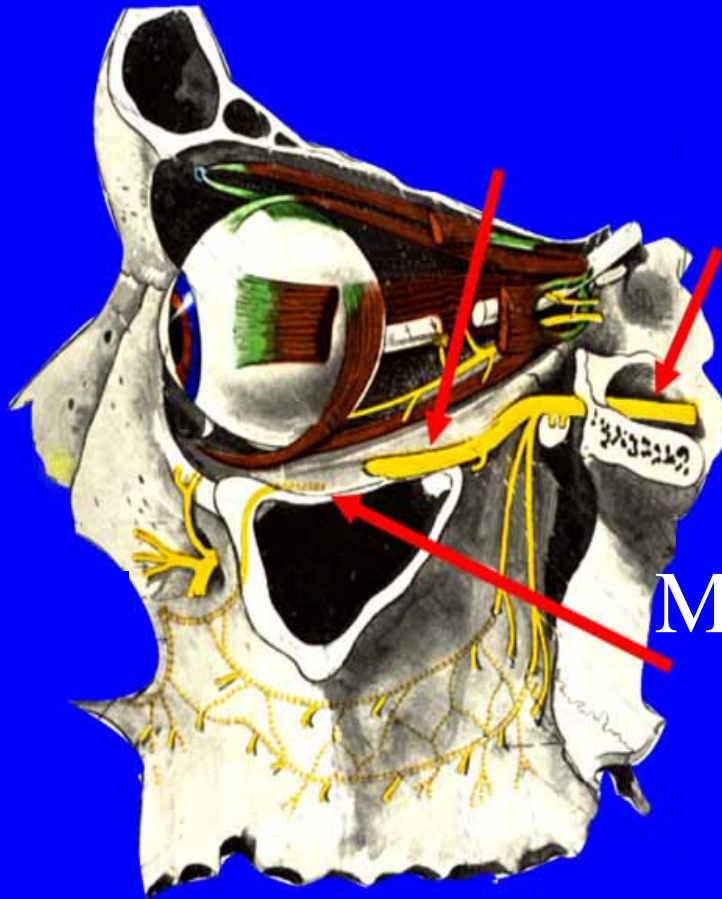


Lateral Pterygoid Plates



Menu



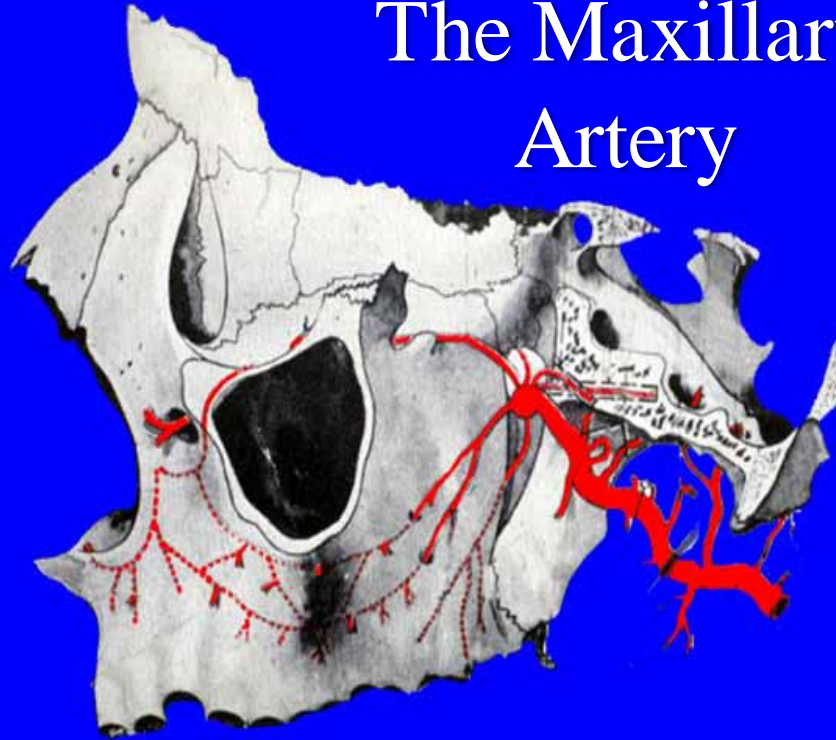


The Maxillary Nerve

Menu



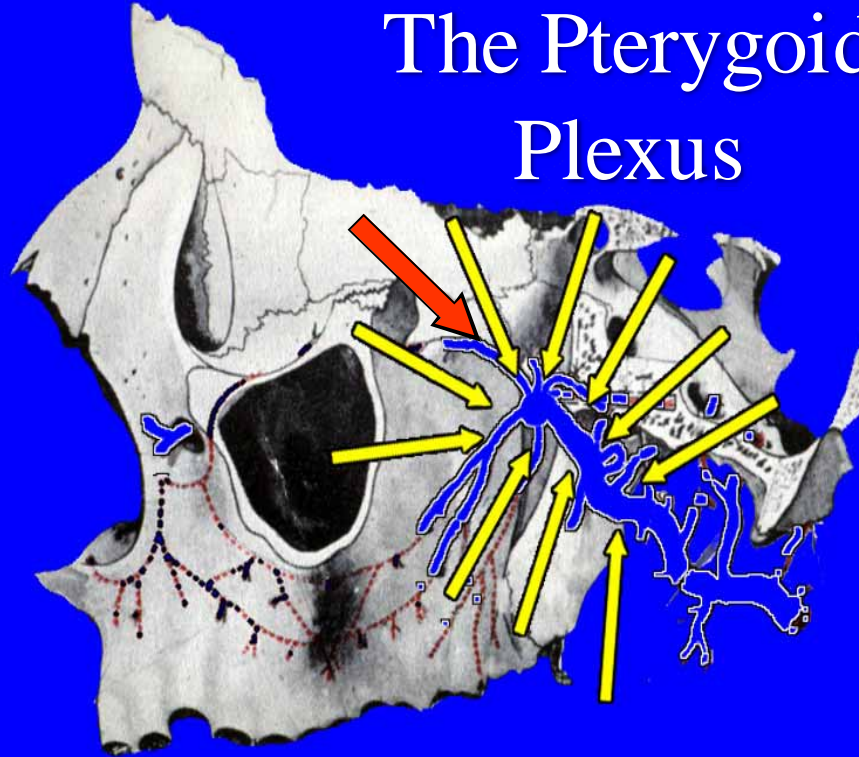
The Maxillary Artery



Menu



The Pterygoid Plexus



Menu



The End



Menu

