



Bridge Cementation

Menu





Menu



The Metalwork



Menu



The Metalwork



Menu



Attached to Tape for Security



Menu



for Retrievability
during Try-in



Menu



if dropped in the Patient's Mouth



Menu



Loupe made from Preformed Plastic



Menu



Trying in Metalwork is Optional



Menu



Metalwork tried in





Progressive Loading

The Concept of leaving Occlusal Clearance between and the Opposing Dentition and Temporary Crowns and Bridges on Implants

Menu



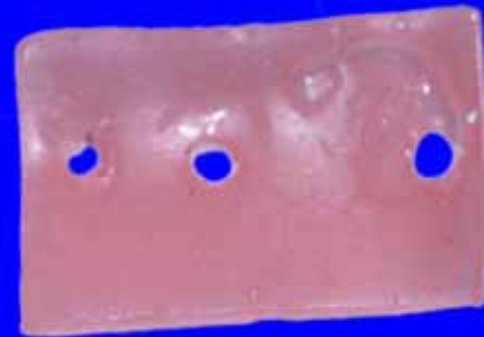
Progressive Loading

This allows the Bone around the
Implants
to adapt to Stresses gradually

Menu



Wax
Template



Menu



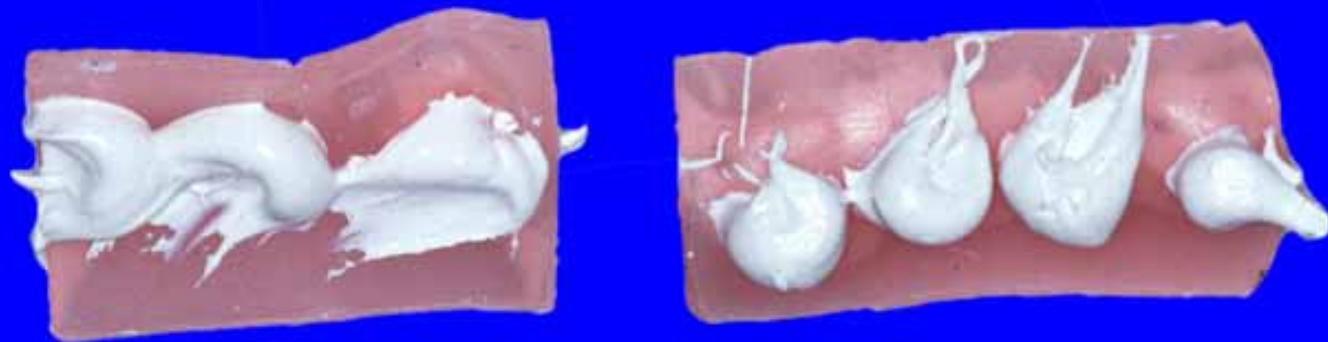
Zinc Oxide and Eugenol Paste



Menu



Zinc Oxide and Eugenol Paste added



Menu



Sectional Centric Records



Menu



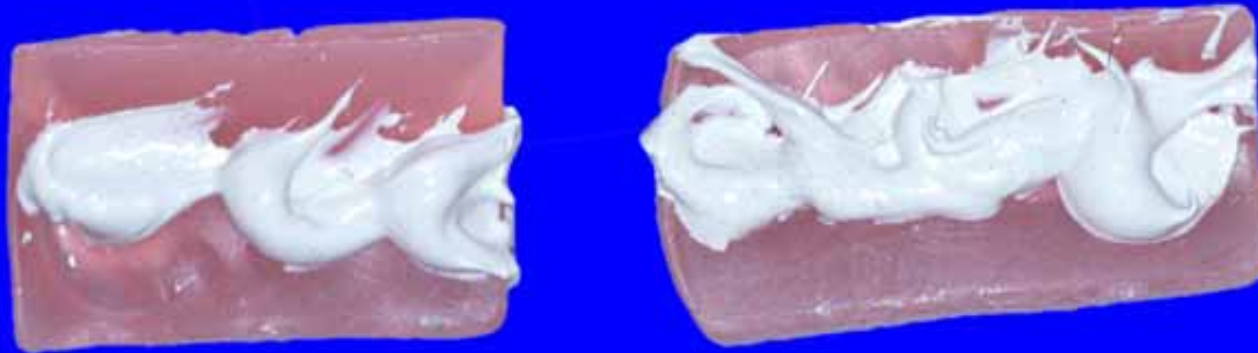
Sectional Centric Records



Menu



Sectional Centric Records



Menu



The Final Restorations



Menu



The Final Restorations



Menu



The Final Restorations



Menu





Menu



Multi-Form Paste



Menu





Checking the Internal Fit



Menu



Checking the Internal Fit



Menu



Checking the Internal Fit



Multiform Paste
is currently discontinued

Menu



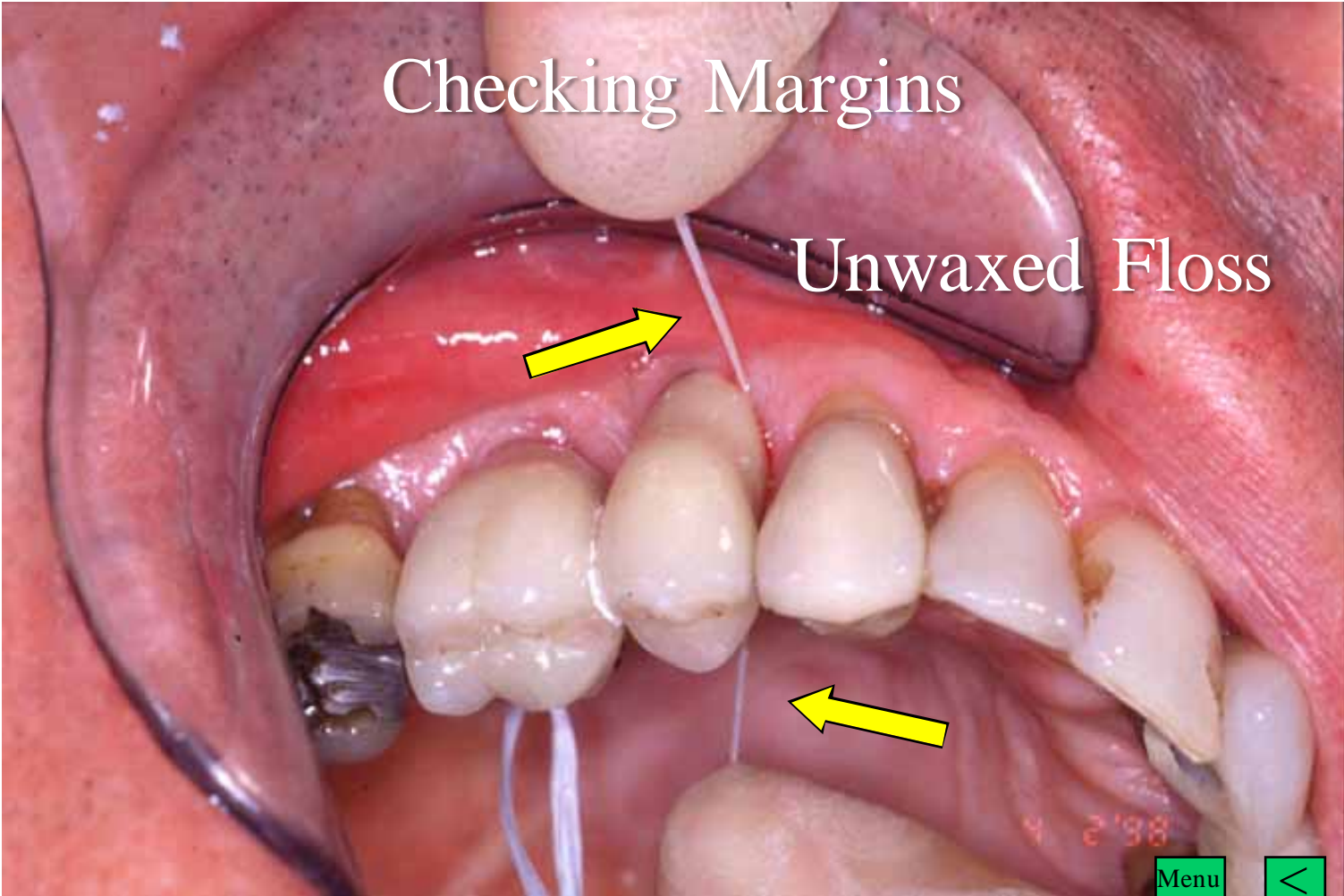
Fit Checker is an alternative Product

Menu



Cleaning off the Eugenol with Chloroform

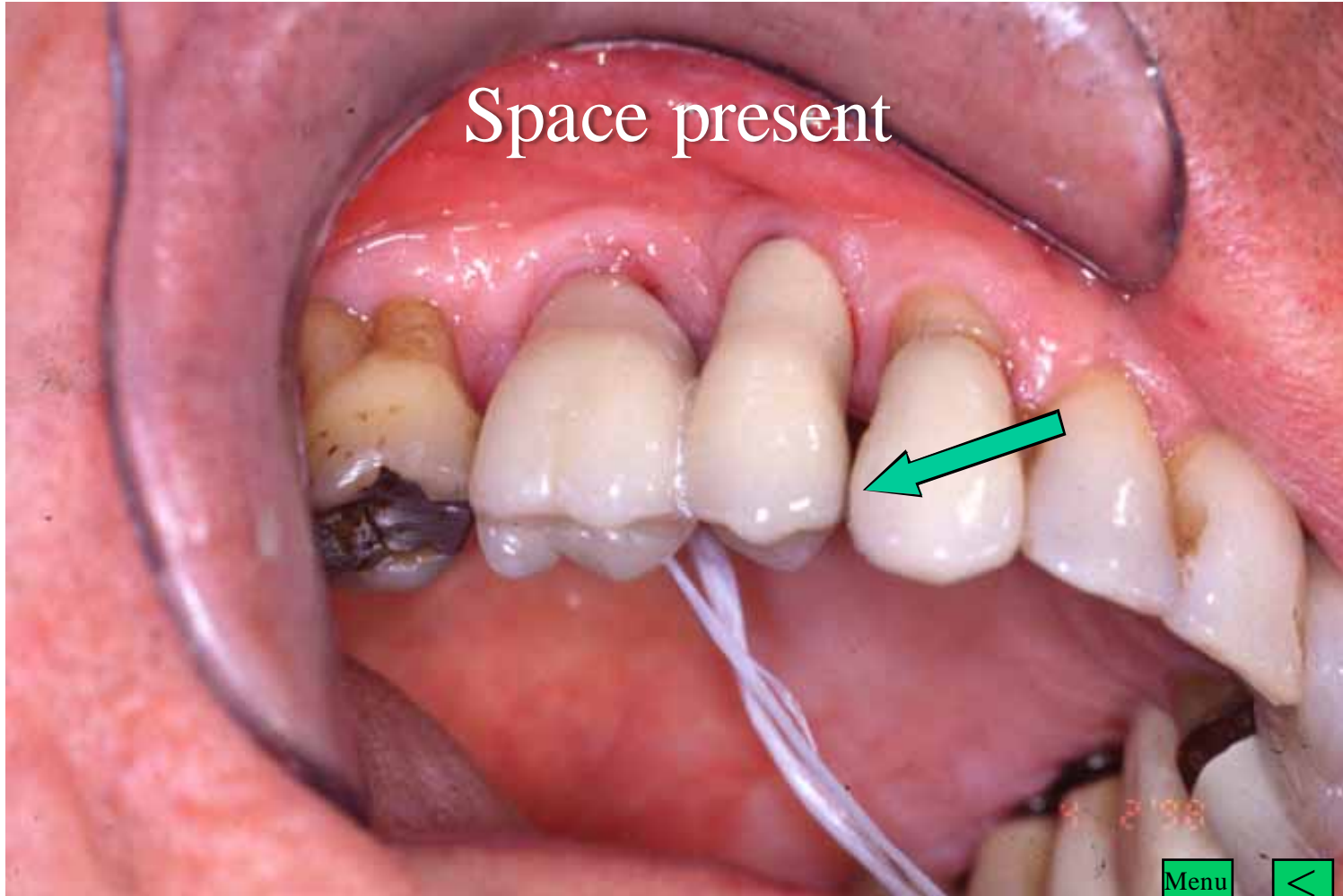




Checking Interproximal Contacts



Space present



Adding Porcelain to the Contact Point



Menu



Diamond Bur used to roughen Contact Point



Menu



Porcelain added



Menu



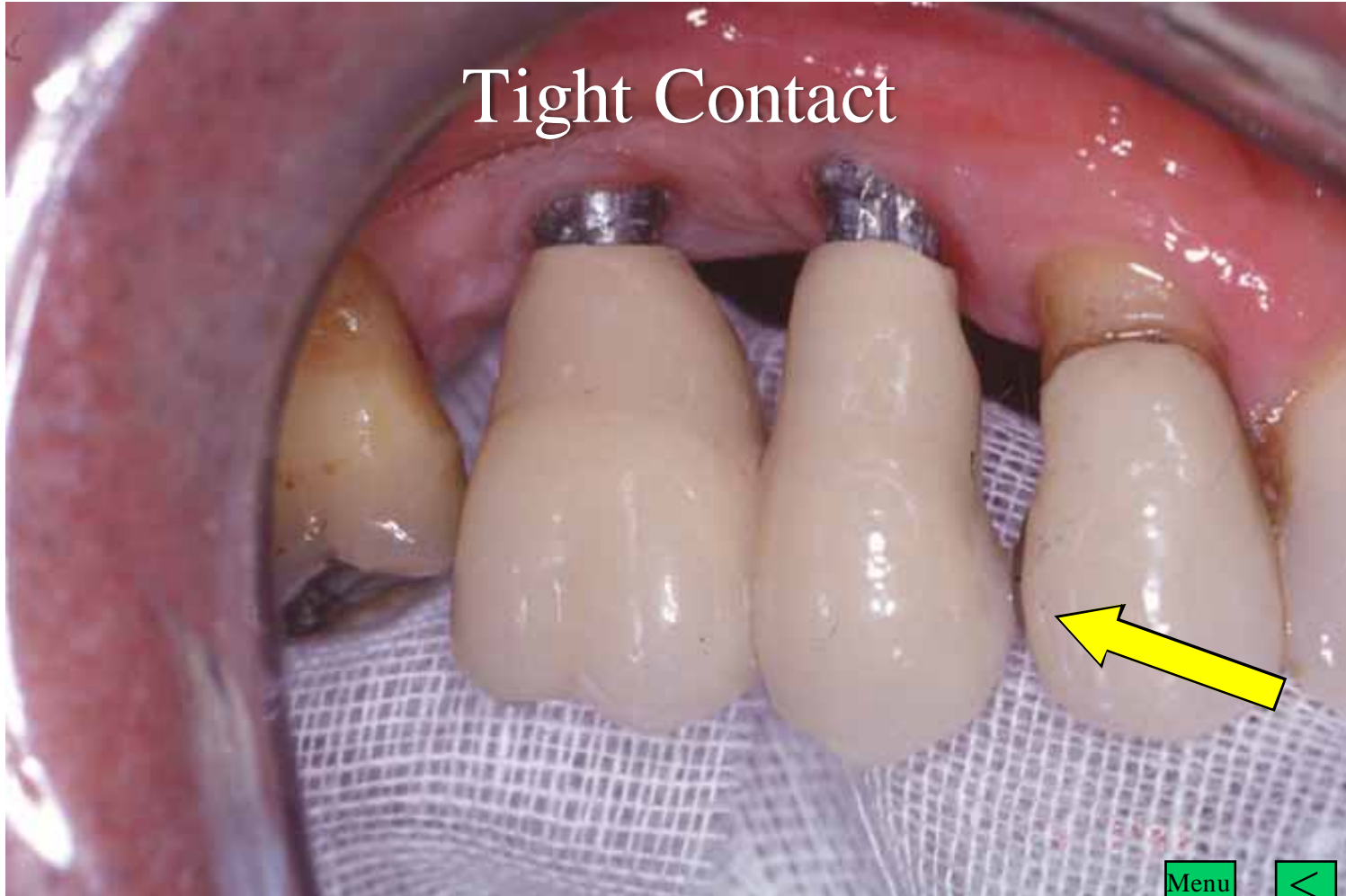
Porcelain Fired



Menu



Tight Contact



Menu





Contact Point
sprayed with
Occlude

Menu



Crowns inserted



Menu



Tight Contact revealed





Menu



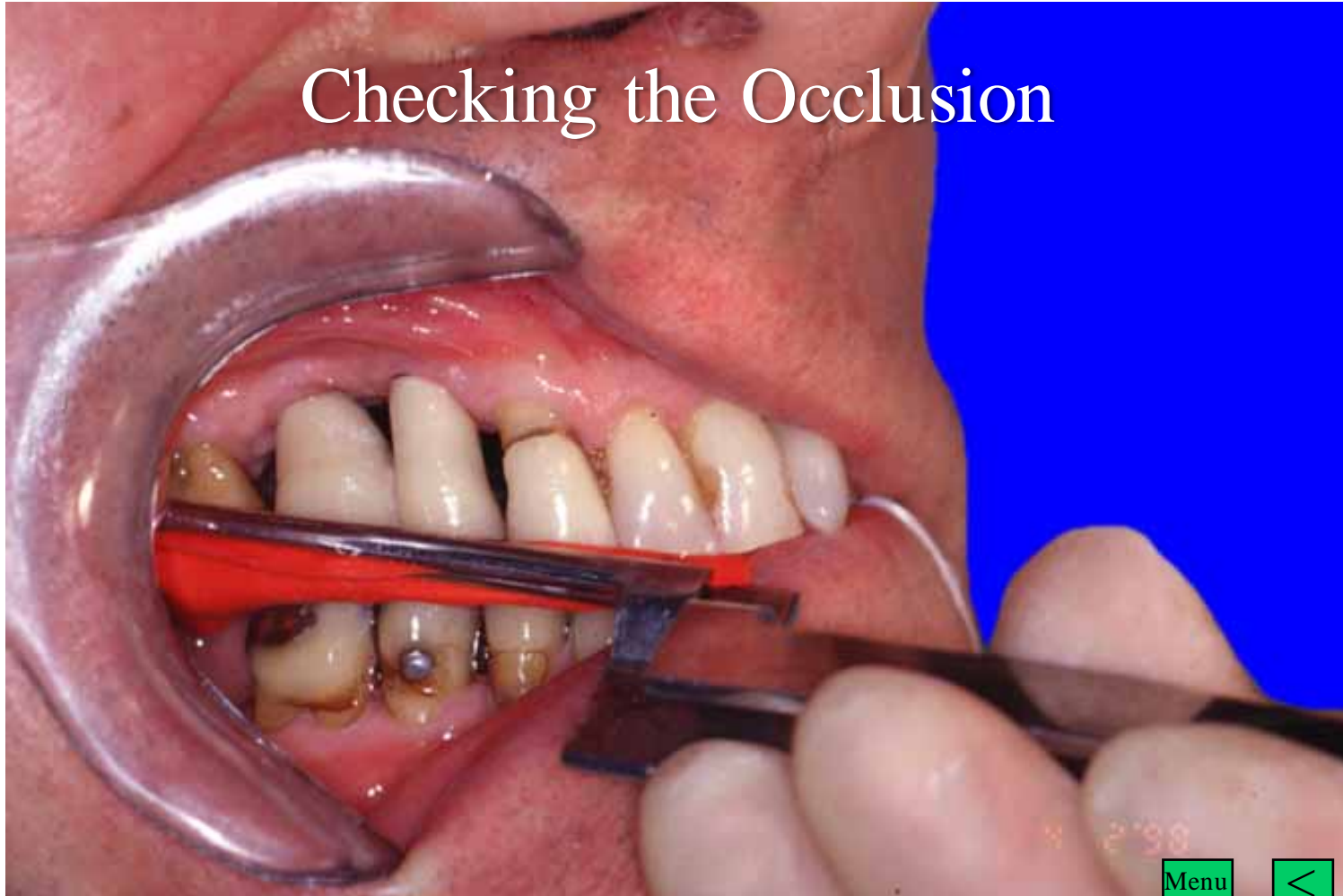


Menu





Checking the Occlusion



Occlusion in Implantology

Final Restorations on Implants should
not be in contact in Light Occlusal
Contact

Menu



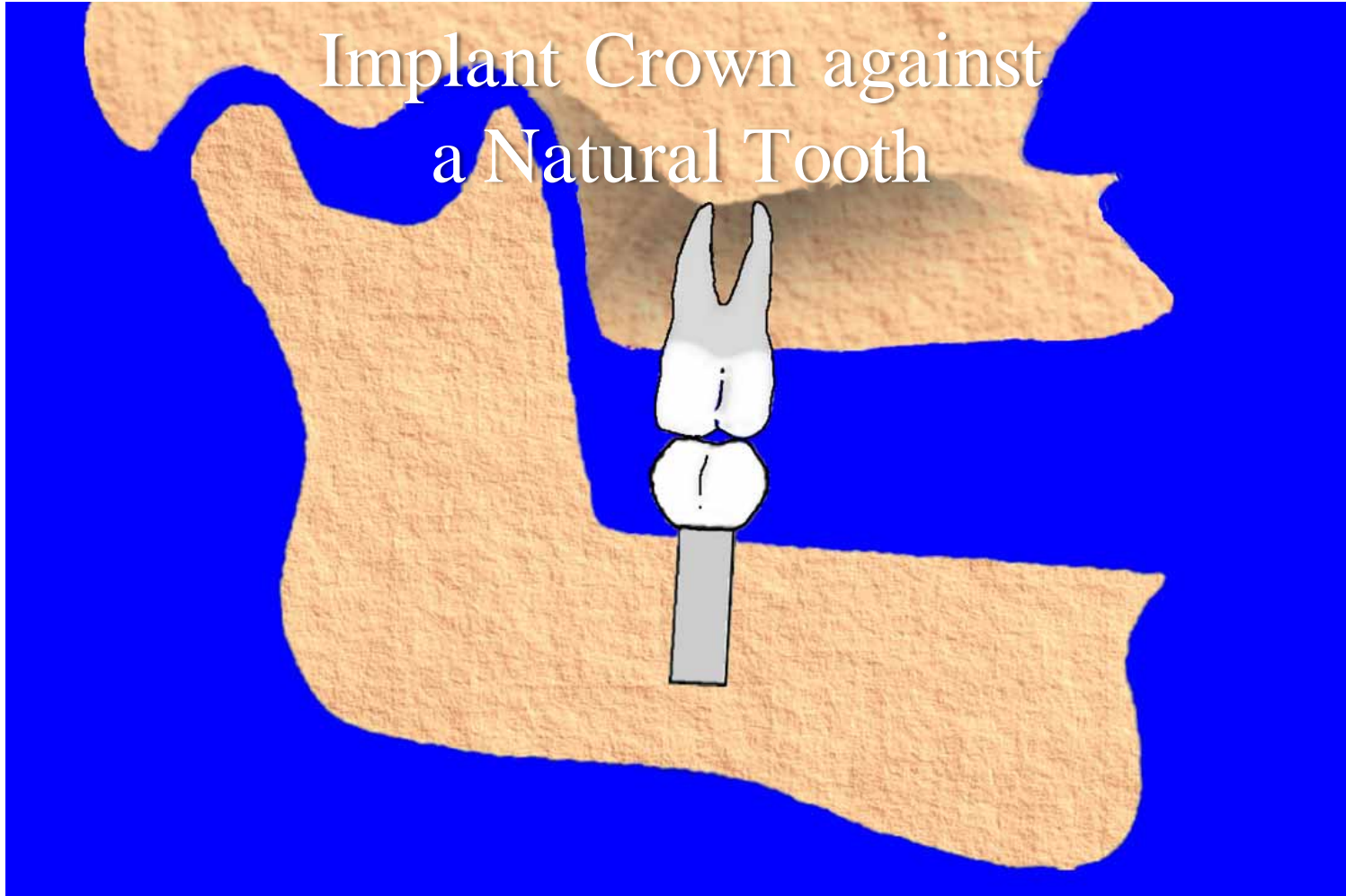
Occlusion in Implantology

Final Restorations on Implants should be in contact in Firm Occlusal Closure

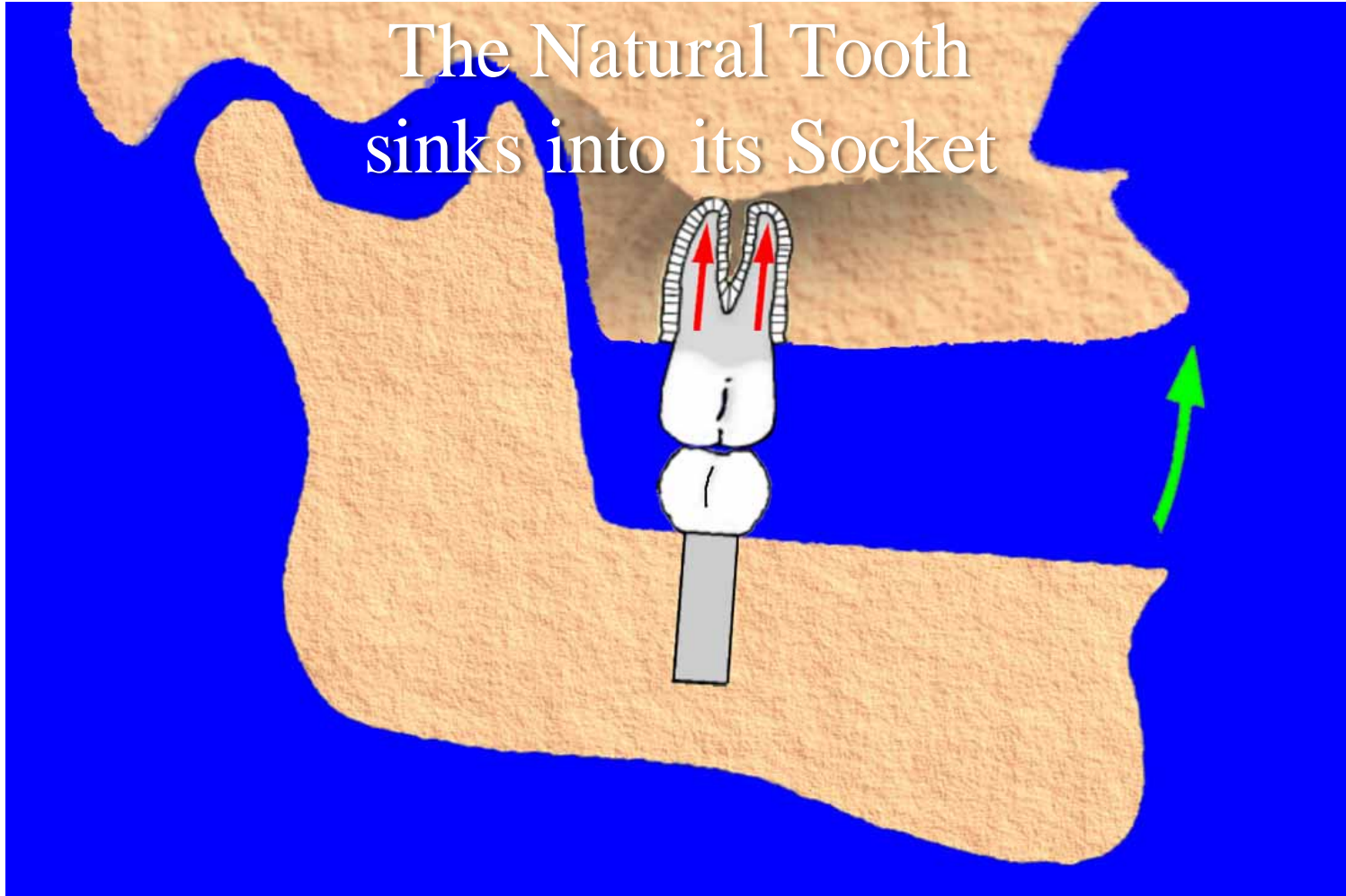
Menu



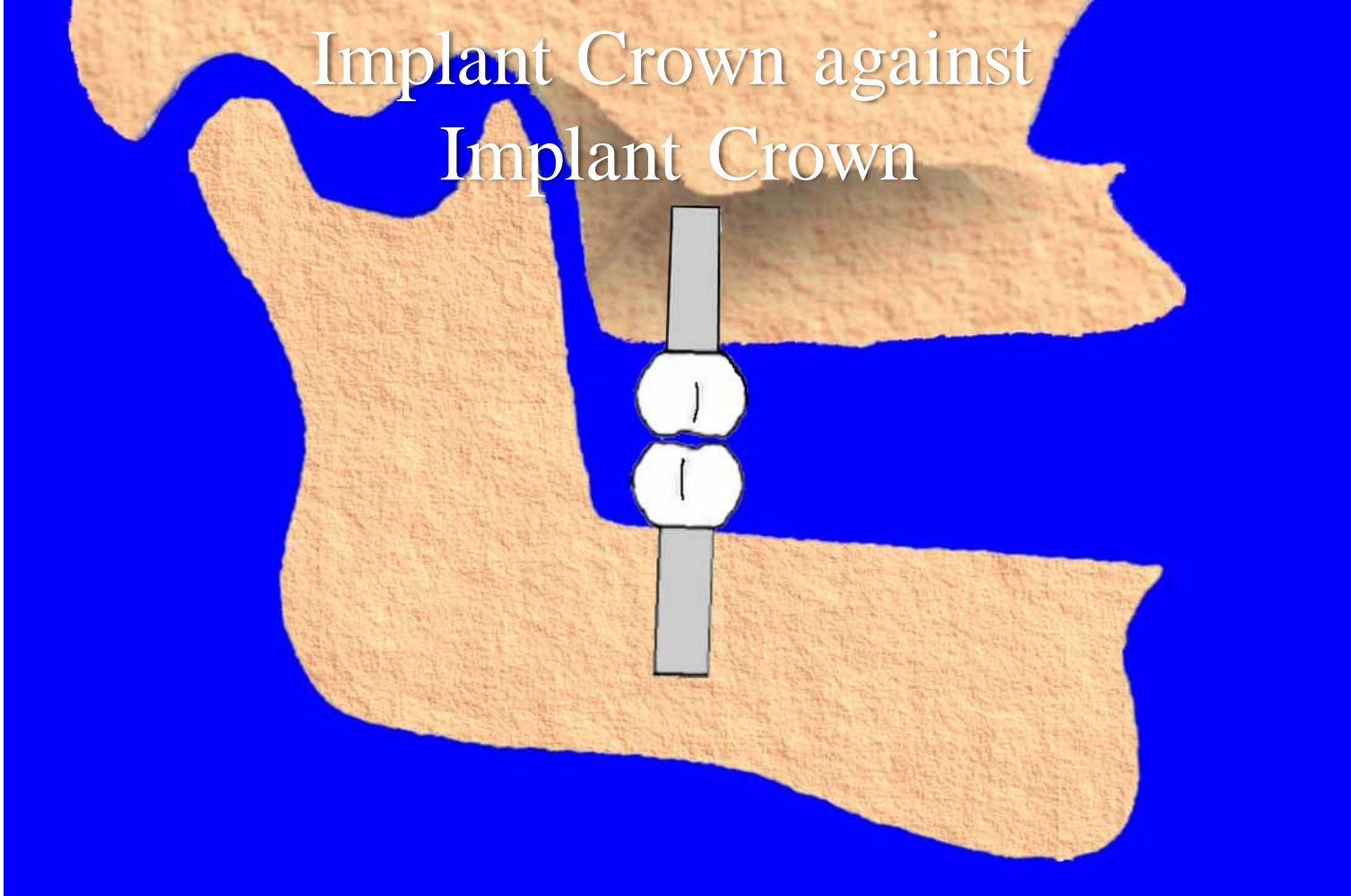
Implant Crown against a Natural Tooth



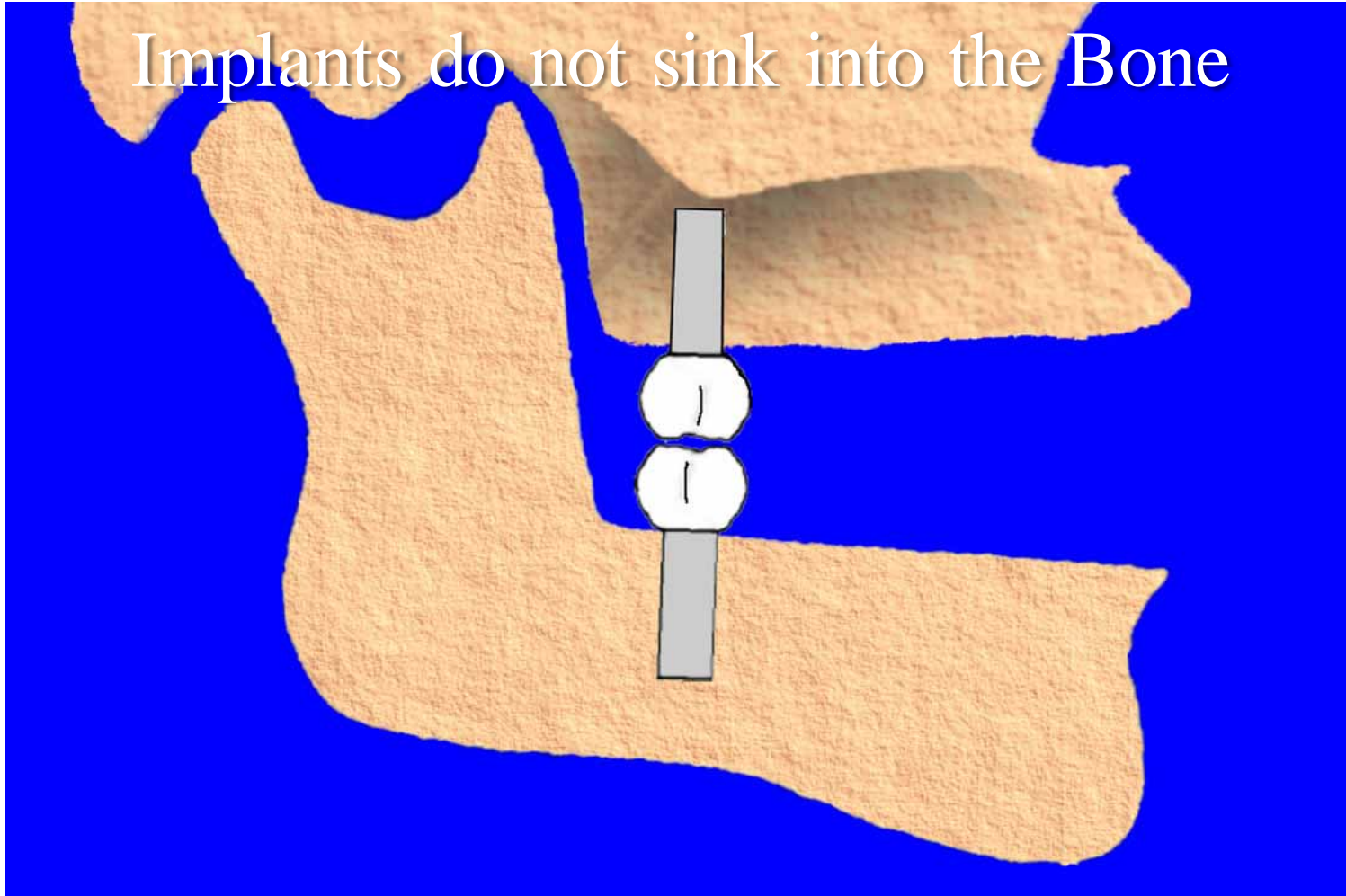
The Natural Tooth
sinks into its Socket



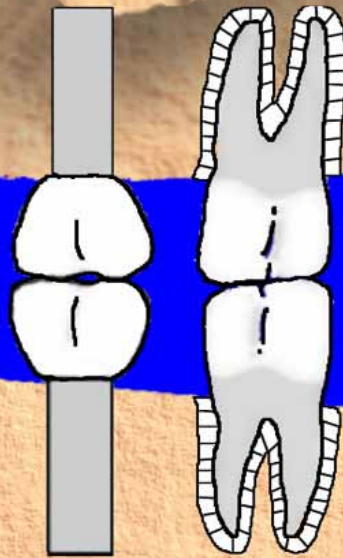
Implant Crown against
Implant Crown



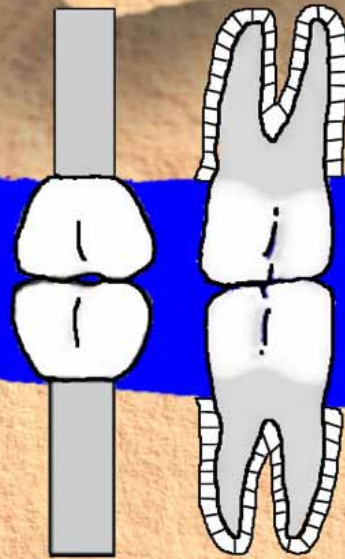
Implants do not sink into the Bone



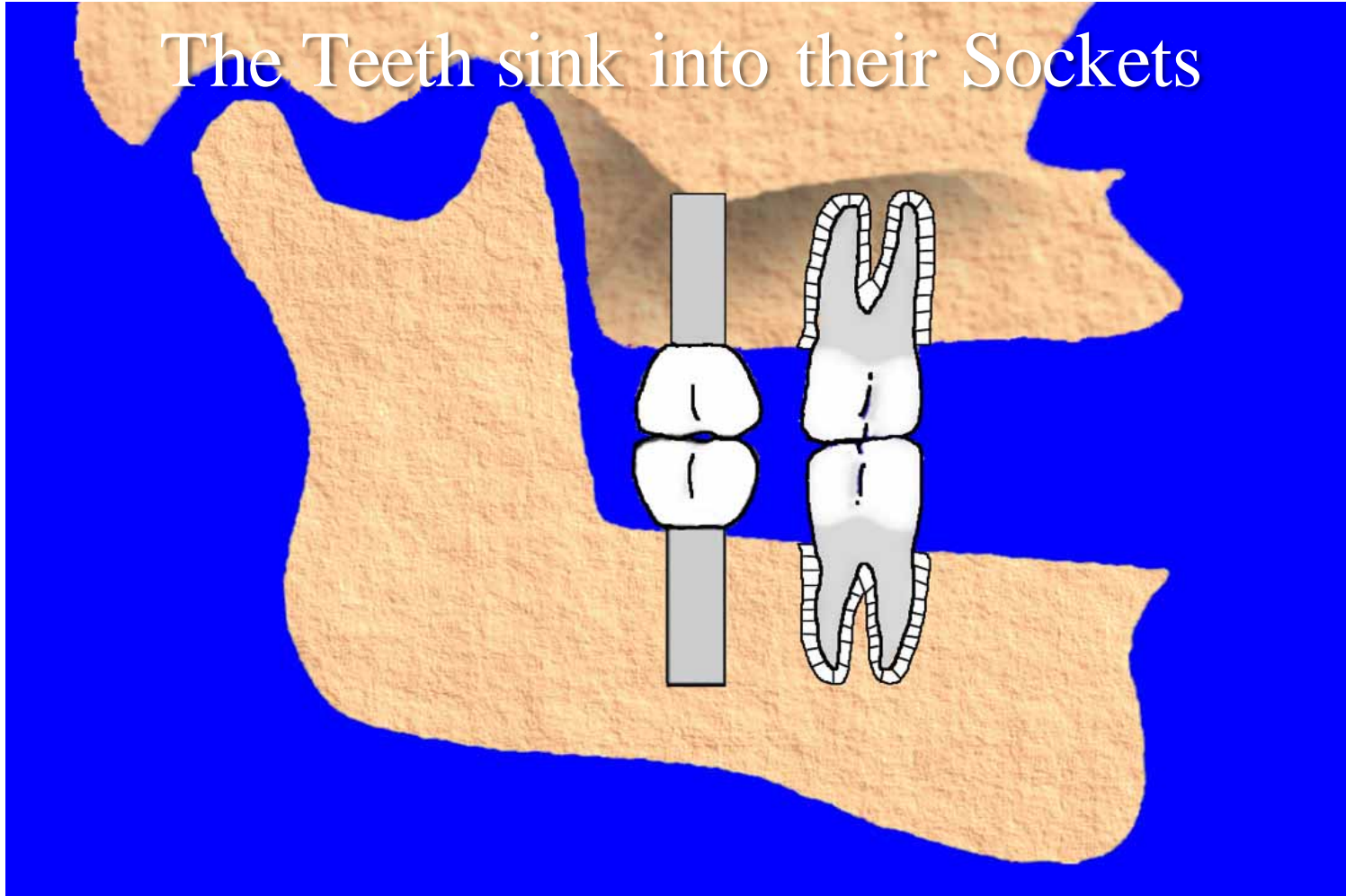
Implant Crown against
Implant Crown



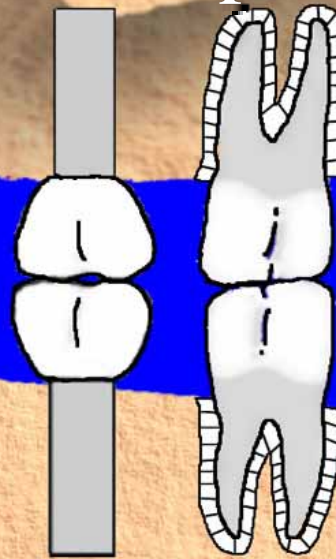
and Crown on a Tooth against
a Crown on a Tooth



The Teeth sink into their Sockets



Occlusal Stresses are then
only on the Implants



Principles of Occlusion for Implantology

- In Light Contact Implants
Crowns should not touch
- Implants should touch in Power
Closure

Medium Interdental Brush



with a Fine Interdental Brush





Menu





Restoration Cemented





Menu





End

Menu

